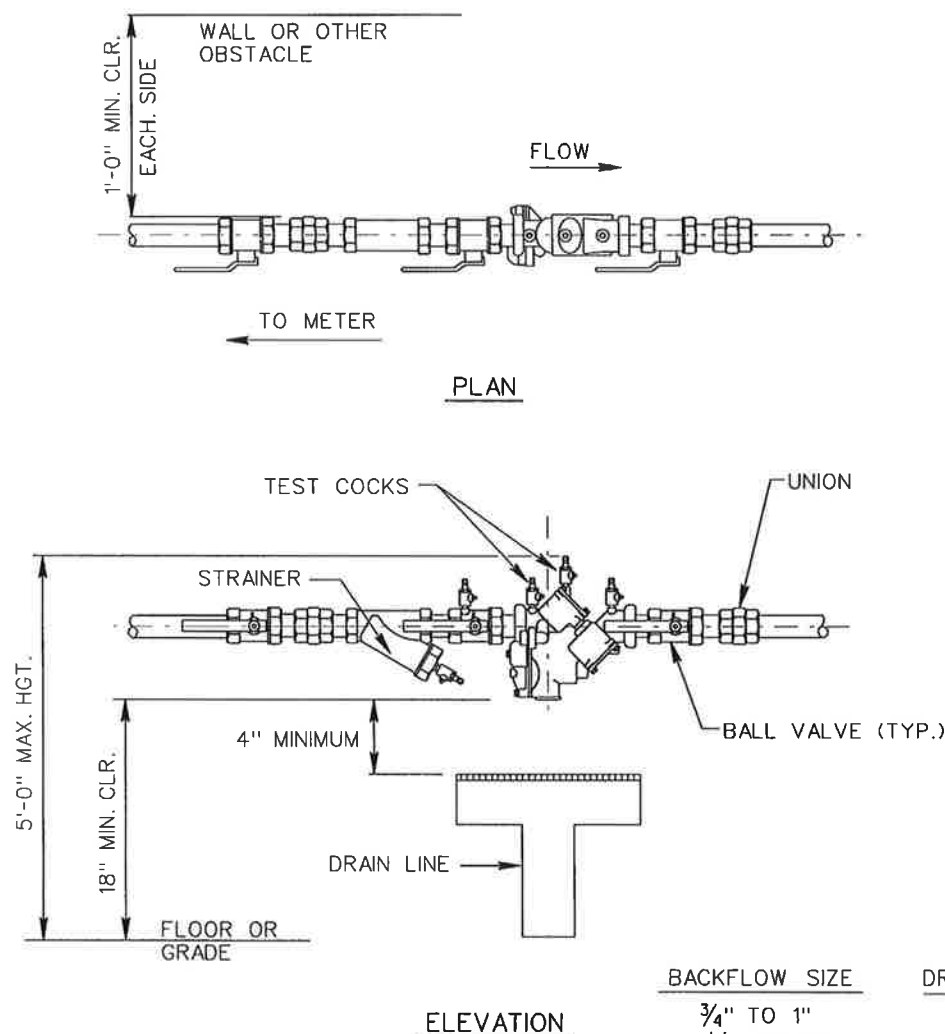


NOTE: MUST ALSO SHOW SPECIFIC LOCATION AND DRAINAGE DETAILS



NOTES

ASSEMBLY SHALL BE HORIZONTALLY INSTALLED COMPLETE WITH CLEARANCES SHOWN.

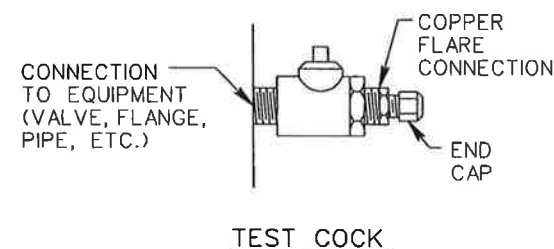
OUTDOOR INSTALLATIONS SHALL BE PROVIDED WITH WEATHERPROOF ENCLOSURE AND FULL FREEZE PROTECTION. HEAT RECOMMENDED.

DRAIN LINE (INSIDE INSTALLATION ONLY) SHALL BE INSTALLED IN ACCORDANCE WITH THE M.S.U.D.'S INSTALLATION REQUIREMENTS.

BALL VALVES SHALL BE RESILIENT SEAT, 1/4 TURN, FULL PORT, BRONZE.

PROVIDE TEST COCKS WITH WATER TIGHT TEST ADAPTORS, COPPER FLARE CONNECTIONS AND END CAPS.

FLOOR DRAINAGE MUST BE SHOWN AND OF ADEQUATE SIZE FOR PROPER DRAINAGE. REFER TO MSUD'S DRAIN LINE REQUIREMENTS FOR DETAILS.



BACKFLOW SIZE	DRAIN SIZE
3/4" TO 1"	3"
1 1/4" TO 2"	6"
2 1/2" TO 3"	6"
4" TO 6"	8"
8" TO 10"	10"

MADISON SUBURBAN
UTILITY DISTRICT

3/4" - 2" REDUCED PRESSURE
BACKFLOW PREVENTER ASSEMBLY

JVE / BWSC

Turner Professional Building
5100 Linbar Drive, Suite 106
Nashville, Tennessee 37211

SCALE: NONE

SHEET NO.

DATE: 04/06/92

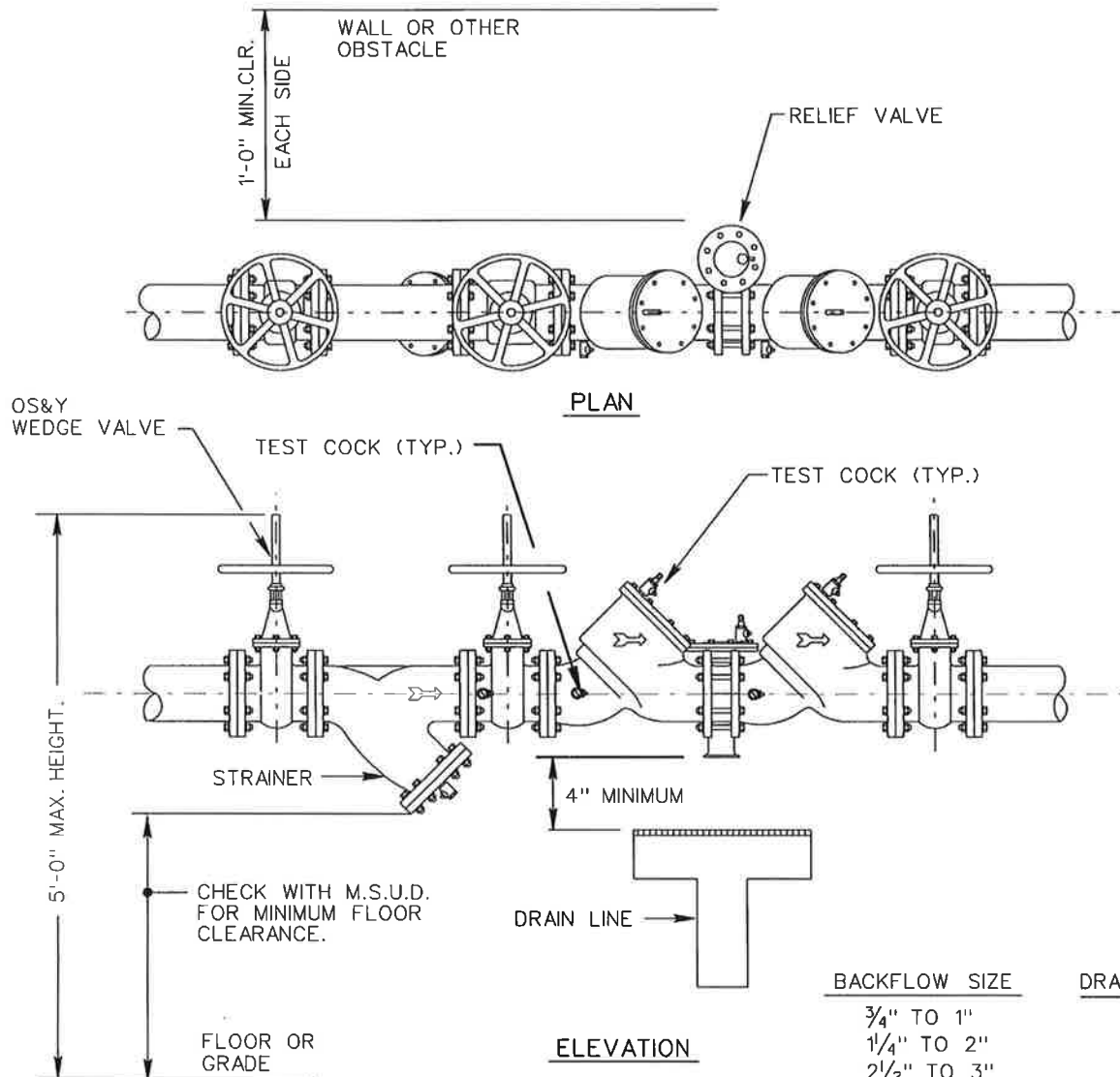
2

REVISED 1/12/99
REVISED 4/04/03
REVISED 4/14/03

REVISED 02/16/00
REVISED 9/7/99

BF-SHEET_02

NOTE: MUST ALSO SHOW SPECIFIC LOCATION AND DRAINAGE DETAILS



NOTES

ASSEMBLY SHALL BE HORIZONTALLY INSTALLED COMPLETE WITH CLEARANCES SHOWN.

OUTDOOR INSTALLATIONS SHALL BE PROVIDED WITH WEATHERPROOF ENCLOSURE AND FULL FREEZE PROTECTION. HEAT RECOMMENDED.

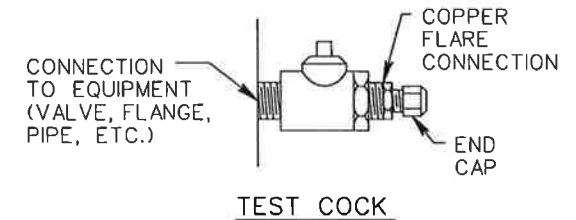
DRAIN LINE (INSIDE INSTALLATION ONLY) SHALL BE INSTALLED IN ACCORDANCE WITH THE M.S.U.D.'S INSTALLATION REQUIREMENTS.

BALL VALVES SHALL BE RESILIENT SEAT, 1/4 TURN, FULL PORT, BRONZE.

ALL DEVICES AND STRAINERS, EXCEPT THOSE MADE OF STAINLESS STEEL, SHALL BE EPOXY COATED.

PROVIDE TEST COCKS WITH WATER TIGHT TEST ADAPTORS, COPPER FLARE CONNECTIONS AND END CAPS.

FLOOR DRAINAGE MUST BE SHOWN AND OF ADEQUATE SIZE FOR PROPER DRAINAGE. REFER TO MSUD'S DRAIN LINE REQUIREMENTS FOR DETAILS.



MADISON SUBURBAN
UTILITY DISTRICT

2 1/2" - 10" REDUCED PRESSURE
BACKFLOW PREVENTER ASSEMBLY

JVE / BWSC

Turner Professional Building
5100 Linbar Drive, Suite 106
Nashville, Tennessee 37211

SCALE: NONE

SHEET NO.

DATE: 04/06/92

3

REVISED 1/12/99

REVISED 02/16/00

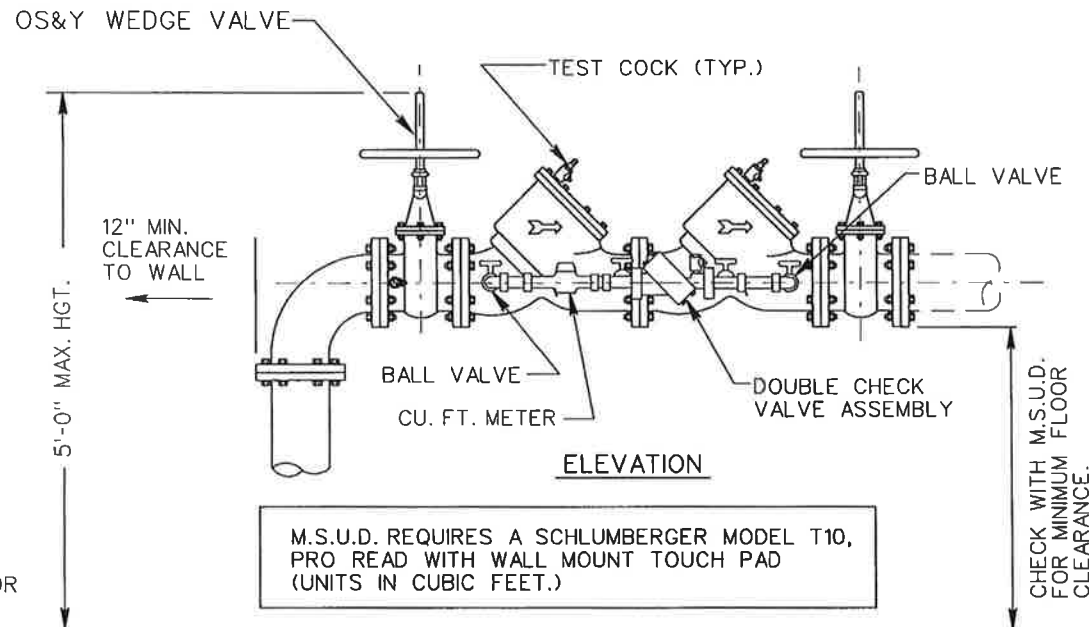
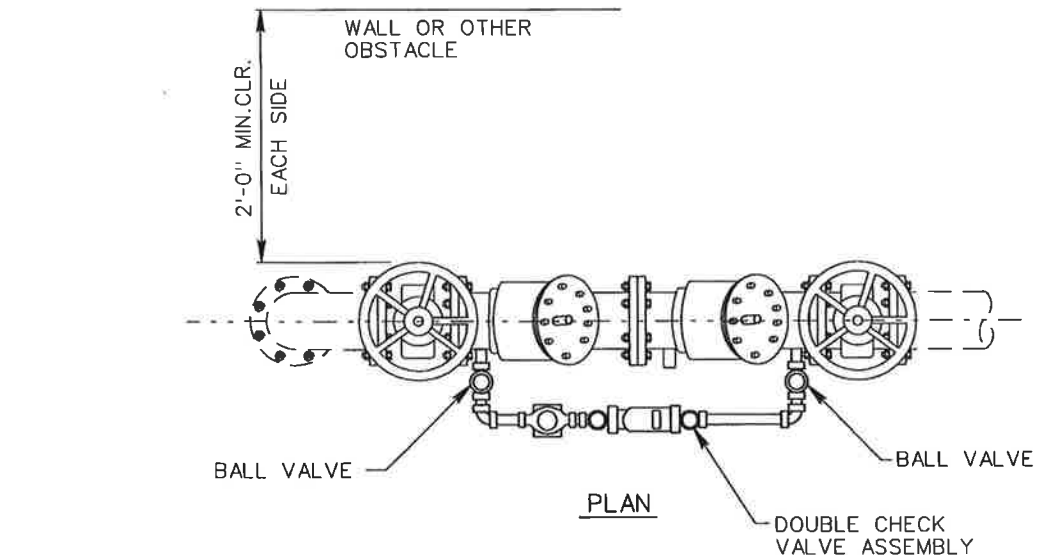
REVISED 02/19/03

REVISED 4/04/03

REVISED 4/14/03

BF-SHEET_03

NOTE: MUST ALSO SHOW SPECIFIC LOCATION AND DRAINAGE DETAILS



NOTES

ASSEMBLY SHALL BE HORIZONTALLY INSTALLED COMPLETE WITH CLEARANCES SHOWN.

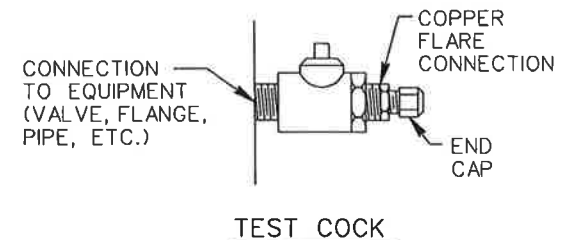
OUTDOOR INSTALLATIONS SHALL BE PROVIDED WITH WEATHERPROOF ENCLOSURE AND FULL FREEZE PROTECTION. HEAT RECOMMENDED.

ALL DEVICES, EXCEPT THOSE MADE OF STAINLESS STEEL, SHALL BE EPOXY COATED.

PROVIDE TEST COCKS WITH WATER TIGHT TEST ADAPTORS, COPPER FLARE CONNECTIONS AND END CAPS.

SHUT-OFF VALVES SHALL BE RESILIENT SEAT, OS&Y, WEDGE TYPE.

FLOOR DRAINAGE MUST BE SHOWN AND OF ADEQUATE SIZE FOR PROPER DRAINAGE. REFER TO MSUD'S DRAIN LINE REQUIREMENTS FOR DETAILS.



MADISON SUBURBAN
UTILITY DISTRICT

4" - 10" DOUBLE DETECTOR
CHECK VALVE ASSEMBLY

JVE / BWSC

Turner Professional Building
5100 Linbar Drive, Suite 106
Nashville, Tennessee 37211

SCALE: NONE

SHEET NO.

DATE: 04/06/92

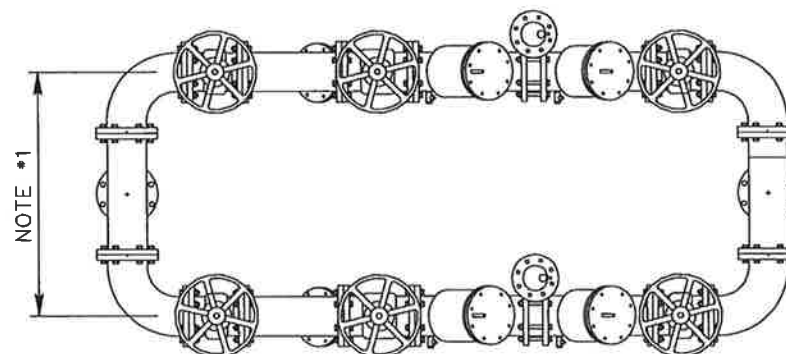
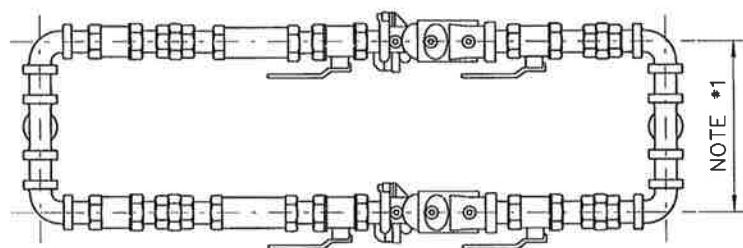
4

REVISED 07/12/95
REVISED 1/12/99
REVISED 9/7/99

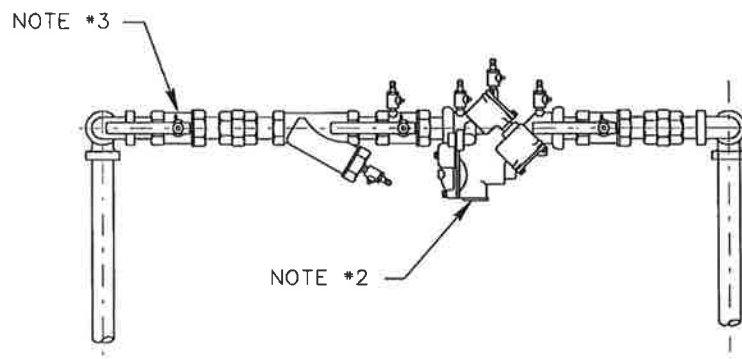
REVISED 02/19/03

BF-SHEET_04

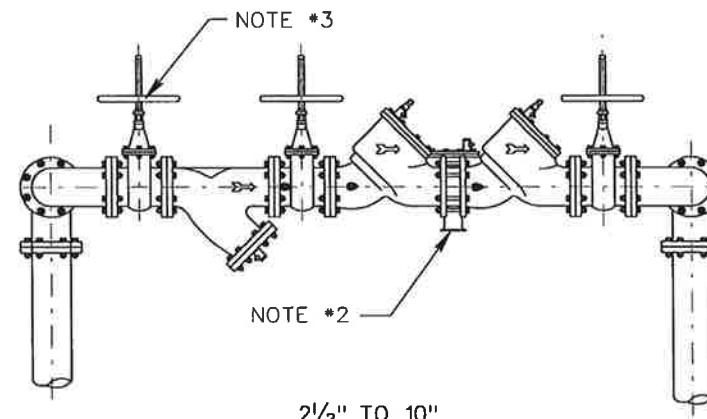
NOTE: MUST ALSO SHOW SPECIFIC LOCATION AND DRAINAGE DETAILS



PLANS



3/4" TO 2"



2 1/2" TO 10"

ELEVATIONS

NOTES

1. SEE SHEETS #2 AND #3 FOR REQUIRED DEVICE AND PIPING CLEARANCES.
2. MIN. REQUIRED DISTANCE FOR SERVICING OR REPAIR OF ASSEMBLY DEVICES. OS&Y VALVES MAY BE ROTATED A MAXIMUM OF 45 DEGREES FROM VERTICAL.
3. RELIEF DRAINS CAN BE INTERCONNECTED, BUT COMBINED DRAIN SIZE SHALL BE SUFFICIENT TO PROPERLY HANDLE SIMULTANEOUS FLOWS FROM RELIEF VALVES. EACH DRAIN WITH SUFFICIENT SPLASH GUARD SHALL BE 2 1/2 TIMES THE DIAMETER OF THE RELIEF VALVE WITH MIN. 4" AIR GAP OPEN SPACE.
4. ISOLATION VALVE REQUIRED.
5. HORIZONTAL ASSEMBLY SHOWN - VERTICAL ASSEMBLY NOT ACCEPTABLE.
6. FLOOR DRAINAGE MUST BE SHOWN AND OF ADEQUATE SIZE FOR PROPER DRAINAGE. REFER TO MSUD's DRAIN LINE REQUIREMENT FOR DETAILS.

BACKFLOW SIZE	DRAIN SIZE
3/4" TO 1"	3"
1 1/4" TO 2"	6"
2 1/2" TO 3"	6"
4" TO 6"	8"
8" TO 10"	10"

MADISON SUBURBAN
UTILITY DISTRICT

DOUBLE INSTALLATION ASSEMBLY
REDUCED PRESSURE BACKFLOW PREVENTER

JME / BWSC

Turner Professional Building
5100 Linbar Drive, Suite 106
Nashville, Tennessee 37211

SCALE: NONE
DATE: 04/06/92

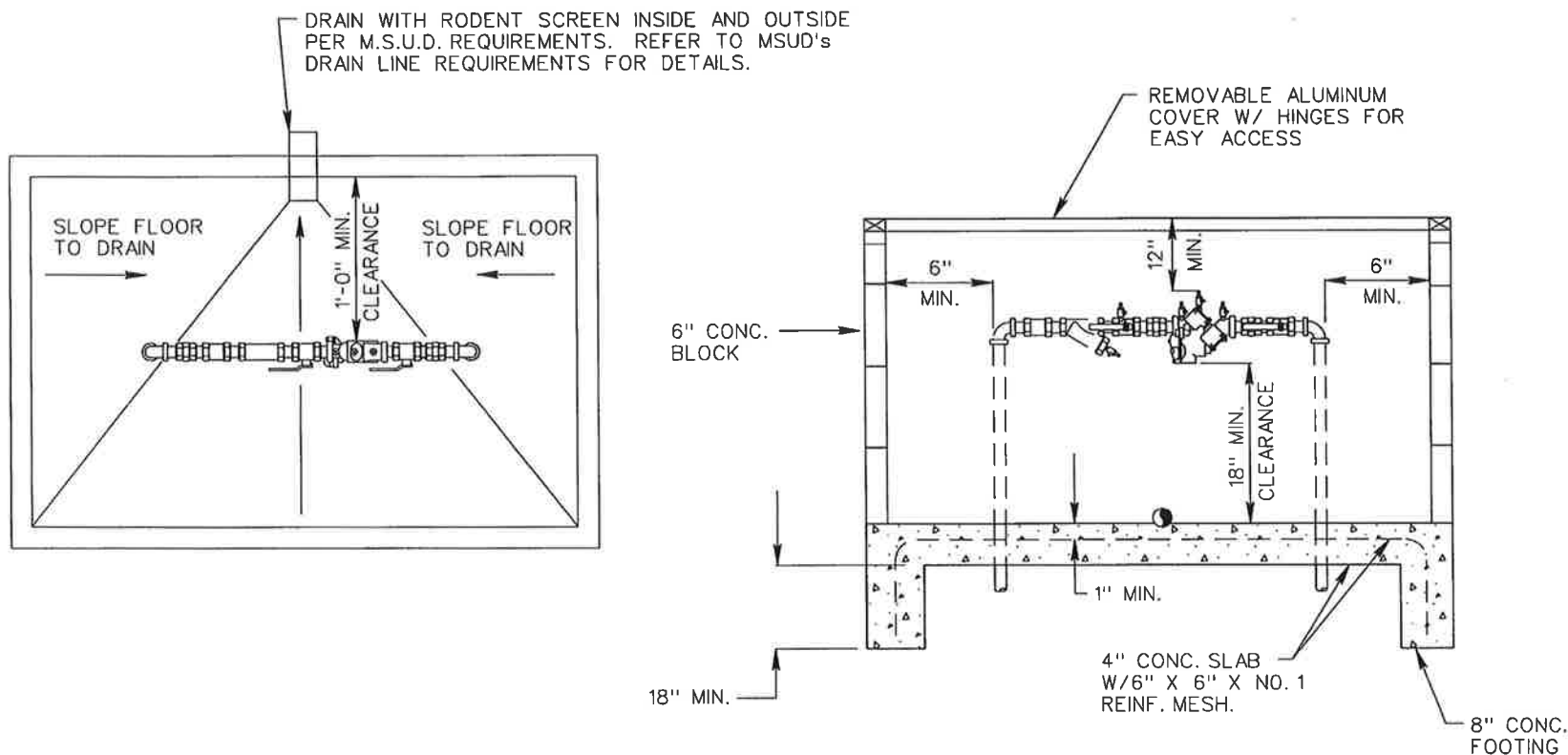
SHEET NO.

5

REVISED 07/12/95
REVISED 1/12/99

REVISED 9/7/99
REVISED 4/14/03

BF-SHEET_05



NOTES

THIS DRAWING INDICATES MINIMUM INSIDE DIMENSIONS FOR CLEARANCE AND ACCESS ONLY. THE PRINCIPAL OBJECTIVES ARE PROTECTION FOR THE INSTALLATION AND ADEQUATE CLEARANCES FOR EASE OF ACCESS AND MAINTENANCE.

INSULATION/HEATING IS RECOMMENDED TO PREVENT FREEZING.

SECURITY FASTENING MAY BE DESIRABLE IN SOME LOCATIONS.

THE FOOTING, SLAB, OR WALL DESIGN AND OUTSIDE FINISH IS OPTIONAL WITH OWNER. PREFABRICATED BOXES OF COMPARABLE DIMENSIONS MAY BE SUBSTITUTED, SUCH AS THE "AQUA SHIELD" OR "HOT BOX" BY COMMERCIAL INSULATION CO., INC., OR, "SAFETY COVER" OR "WATERSAFE" BY GRIFFIN & CANTRELL.

BACKFLOW SIZE

$\frac{3}{4}$ " TO 1"

$1\frac{1}{4}$ " TO 2"

DRAIN SIZE

3 - 3" DRAINS

3 - 6" DRAINS

MADISON SUBURBAN UTILITY DISTRICT

$\frac{3}{4}$ " - 2" REDUCED PRESSURE
BACKFLOW PREVENTER ASSEMBLY BOX

JVE/BWSC

Turner Professional Building
5100 Linbar Drive, Suite 106
Nashville, Tennessee 37211

SCALE: NONE

SHEET NO.

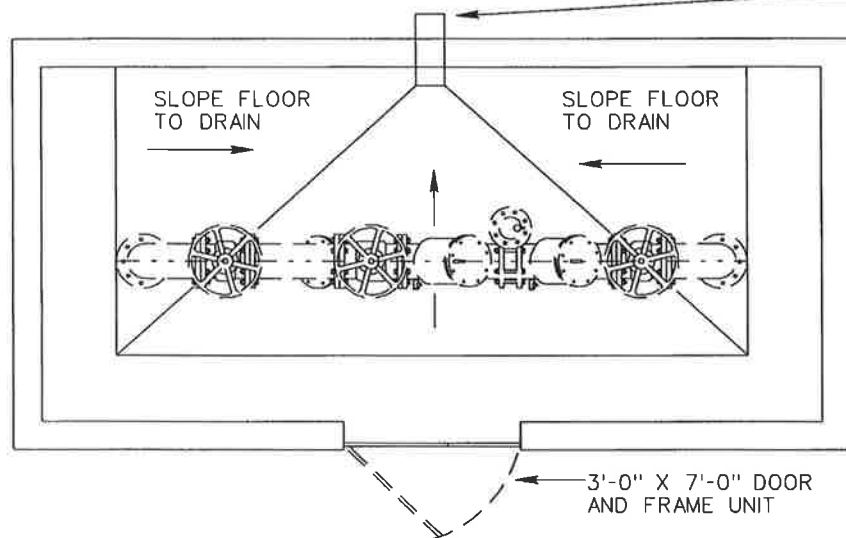
DATE: 04/06/92

6

REVISED 07/12/95
REVISED 01/12/99

REVISED 11/6/02
REVISED 4/14/03

BF-SHEET_06

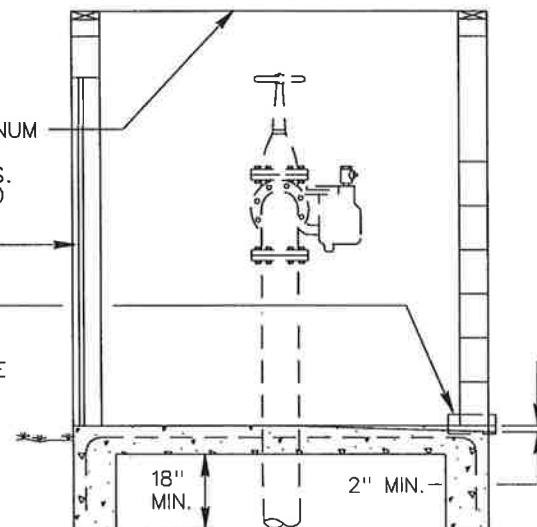


DRAIN WITH RODENT
SCREEN INSIDE AND OUTSIDE
PER M.S.U.D. REQUIREMENTS,
REFER TO MSUD's DRAIN LINE
REQUIREMENTS FOR DETAILS.

REMOVABLE ALUMINUM
COVER W/ HINGES
FOR EASY ACCESS.
(MIN. 2'-8" X 6'-8")

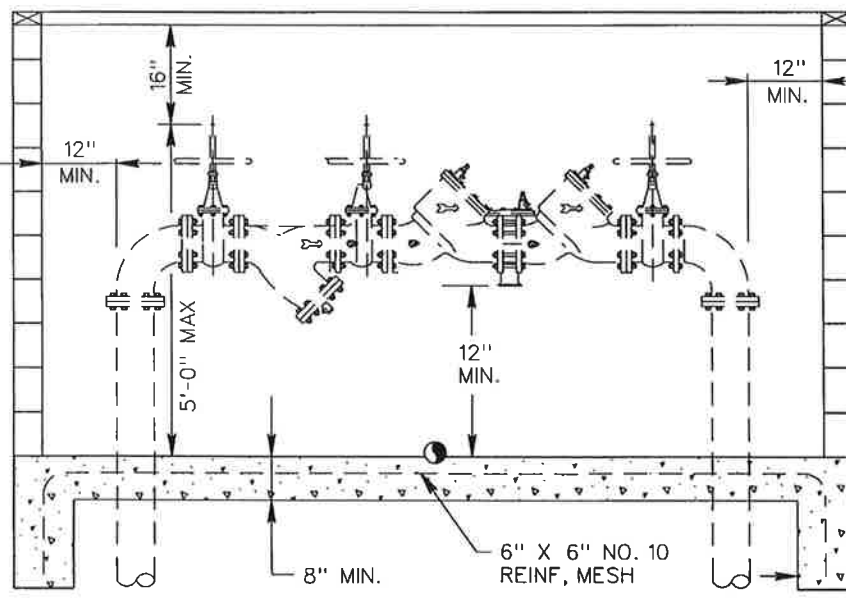
3'-0" X 7'-0" DOOR
AND FRAME UNIT

DRAIN WITH RODENT
SCREEN INSIDE AND OUTSIDE
PER M.S.U.D. REQUIREMENTS,
REFER TO MSUD's DRAIN LINE
REQUIREMENTS FOR DETAILS.



NOTES

1. THIS DRAWING INDICATES MINIMUM INSIDE DIMENSIONS FOR CLEARANCE AND ACCESS ONLY. THE PRINCIPAL OBJECTIVES ARE PROTECTION FOR THE INSTALLATION AND ADEQUATE CLEARANCES FOR EASE OF ACCESS AND MAINTENANCE.
 - * INSULATION / HEATING IS RECOMMENDED TO PREVENT FREEZING.
 - * SECURITY FASTENING MAY BE DESIRABLE IN SOME LOCATIONS.
 - * THE FOOTING, SLAB, OR WALL DESIGN AND OUTSIDE FINISH IS OPTIONAL WITH OWNER. PREFABRICATED BOXES OF COMPARABLE DIMENSIONS MAY BE SUBSTITUTED, SUCH AS THE "AQUA SHIELD" OR "HOT BOX" BY COMMERCIAL INSULATION CO., INC., OR "SAFETY COVER" OR "WATERSAFE" BY GRIFFIN & CANTRELL.
2. 5'-0" MAXIMUM FROM FLOOR TO TOP OF OS&Y VALVE



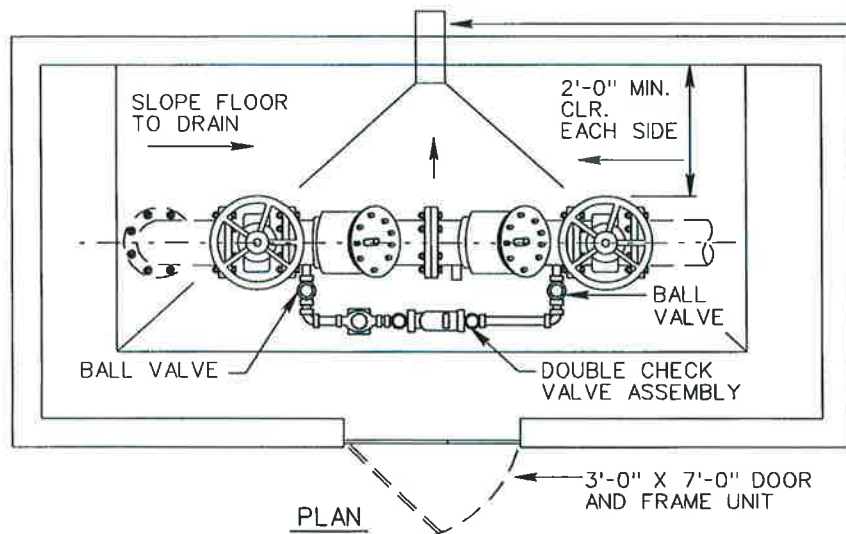
6" CONC.
BLOCKS
(TYP.)

BACKFLOW SIZE	DRAIN SIZE
2 1/2" TO 3"	3 - 6" DRAINS
4" TO 6"	3 - 8" DRAINS
8" TO 10"	3 - 10" DRAINS

MADISON SUBURBAN UTILITY DISTRICT	
2 1/2" - 10" REDUCED PRESSURE BACKFLOW PREVENTER ASSEMBLY BOX	
JVE / BWSC	
Turner Professional Building 5100 Linbar Drive, Suite 106 Nashville, Tennessee 37211	
SCALE: NONE	SHEET NO. 7
DATE: 04/06/92	

REVISED 07/12/95
REVISED 01/12/99:

REVISED 11/06/02
REVISED 4/14/03

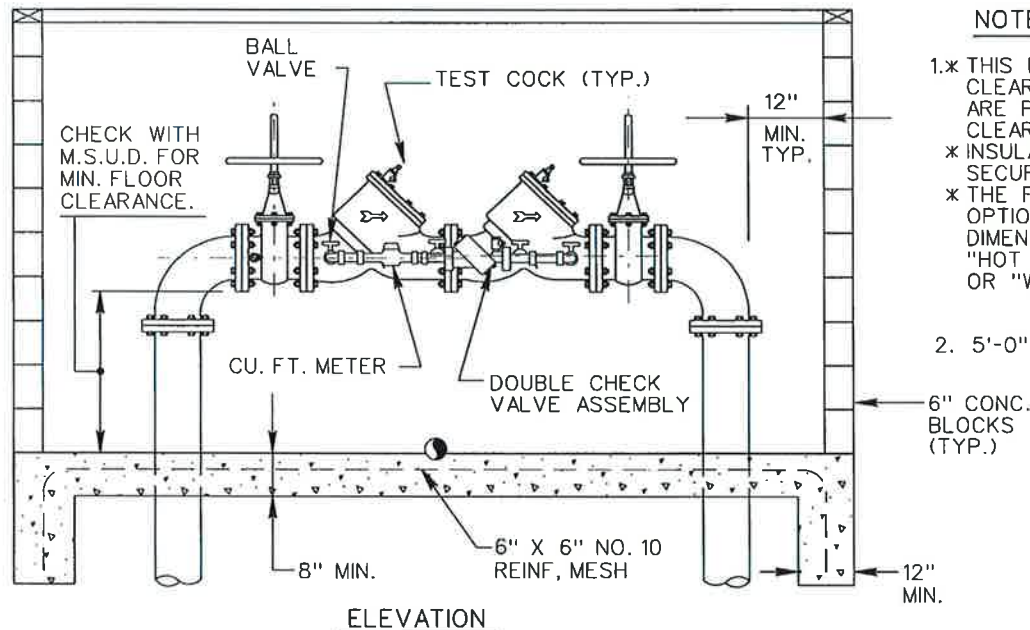
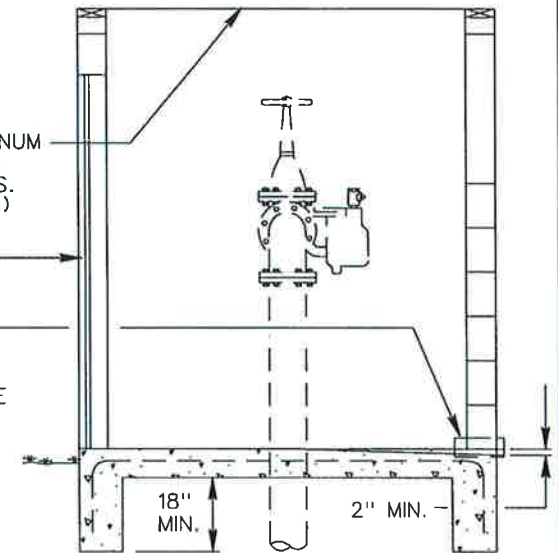


DRAIN WITH RODENT SCREEN INSIDE AND OUTSIDE PER M.S.U.D. REQUIREMENTS, REFER TO MSUD's DRAIN LINE REQUIREMENTS FOR DETAILS.

REMOVABLE ALUMINUM COVER W/ HINGES FOR EASY ACCESS. (MIN. 2'-8" X 6'-8")

3'-0" X 7'-0" DOOR AND FRAME UNIT

DRAIN WITH RODENT SCREEN INSIDE AND OUTSIDE PER M.S.U.D. REQUIREMENTS, REFER TO MSUD's DRAIN LINE REQUIREMENTS FOR DETAILS.



NOTES

- 1.* THIS DRAWING INDICATES MINIMUM INSIDE DIMENSIONS FOR CLEARANCE AND ACCESS ONLY. THE PRINCIPAL OBJECTIVES ARE PROTECTION FOR THE INSTALLATION AND ADEQUATE CLEARANCES FOR EASE OF ACCESS AND MAINTENANCE.
 - * INSULATION / HEATING IS RECOMMENDED TO PREVENT FREEZING. SECURITY FASTENING MAY BE DESIRABLE IN SOME LOCATIONS.
 - * THE FOOTING, SLAB, OR WALL DESIGN AND OUTSIDE FINISH IS OPTIONAL WITH OWNER. PREFABRICATED BOXES OF COMPARABLE DIMENSIONS MAY BE SUBSTITUTED, SUCH AS THE "AQUA SHIELD" OR "HOT BOX" BY COMMERCIAL INSULATION CO., INC., OR "SAFETY COVER" OR "WATERSAFE" BY GRIFFIN & CANTRELL.

2. 5'-0" MAXIMUM FROM FLOOR TO TOP OF OS&Y VALVE

M.S.U.D. REQUIRES A SCHLUMBERGER MODEL T10, PRO READ WITH WALL MOUNT TOUCH PAD (UNITS IN CUBIC FEET.)

BACKFLOW SIZE

2 1/2" TO 3"
4" TO 6"
8" TO 10"

DRAIN SIZE

3 - 6" DRAINS
3 - 8" DRAINS
3 - 10" DRAINS

MADISON SUBURBAN UTILITY DISTRICT

4" - 10" DOUBLE DETECTOR
CHECK VALVE ASSEMBLY-ASSEMBLY BOX

JVE/BWSC

Turner Professional Building
5100 Linbar Drive, Suite 106
Nashville, Tennessee 37211

SCALE: NONE

SHEET NO.

DATE: 02/16/00

8

REVISED 11/06/02
REVISED 4/14/03

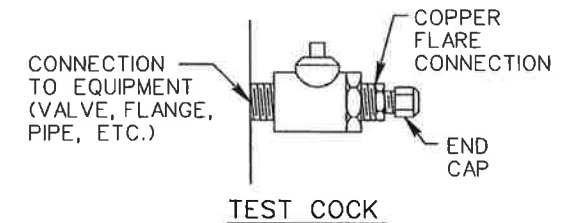
REVISED 02/19/03

BF-SHEET_08

NOTE: MUST ALSO SHOW SPECIFIC LOCATION AND DRAINAGE DETAILS

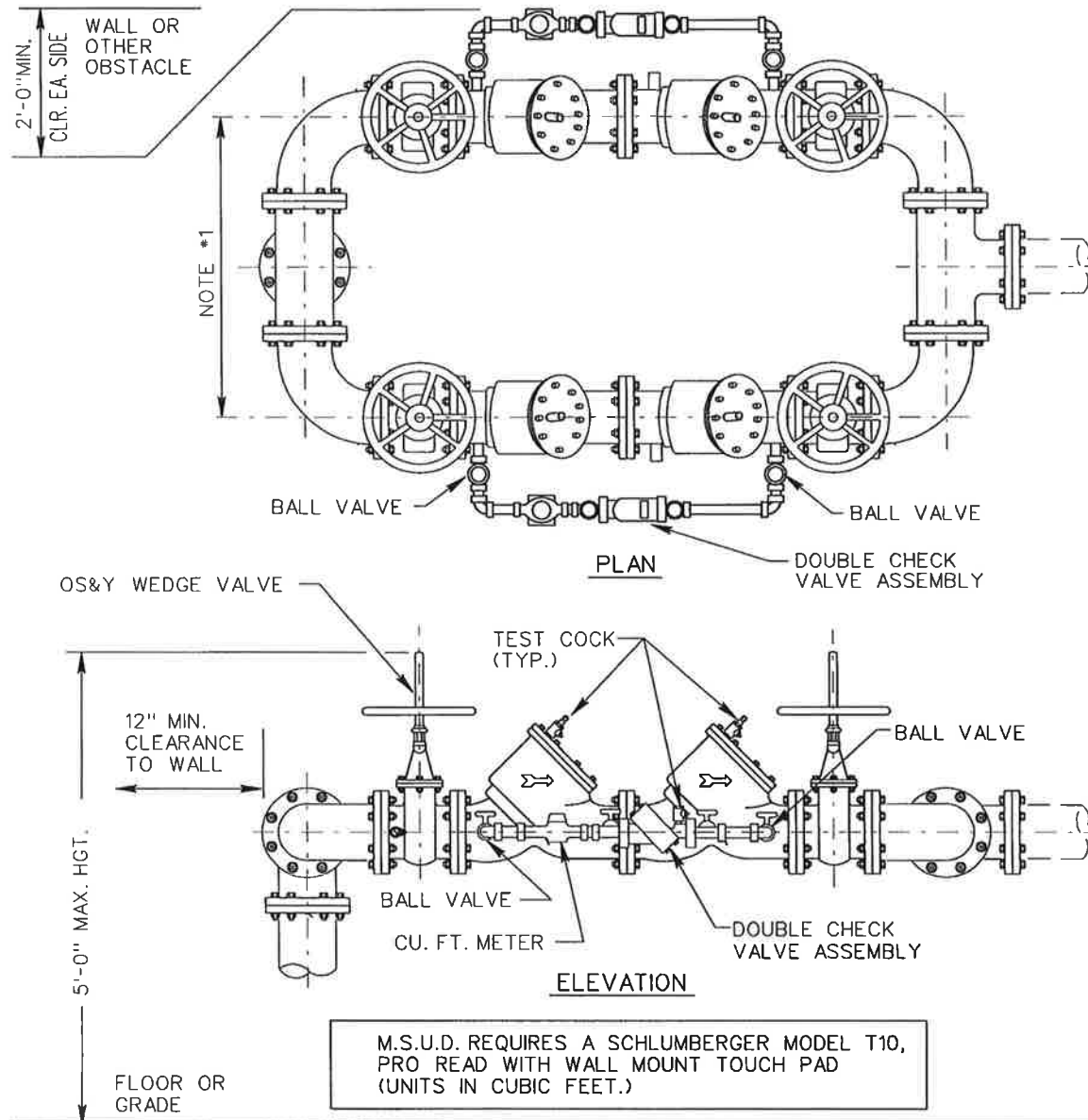
NOTES

1. MIN. REQUIRED DISTANCE FOR SERVICING OR REPAIRING OF ASSEMBLY DEVICES.
2. ASSEMBLY SHALL BE HORIZONTALLY INSTALLED COMPLETE WITH CLEARANCES SHOWN.
3. OUTDOOR INSTALLATIONS SHALL BE PROVIDED WITH WEATHERPROOF ENCLOSURE AND FULL FREEZE PROTECTION. HEAT RECOMMENDED.
4. ALL DEVICES, EXCEPT THOSE MADE OF STAINLESS STEEL, SHALL BE EPOXY COATED. PROVIDE TEST COCKS ON BOTH DEVICES WITH WATER TIGHT TEST ADAPTORS, COPPER FLARE CONNECTIONS AND END CAPS.
5. SHUT-OFF VALVES SHALL BE RESILIENT SEAT, OS&Y, WEDGE TYPE.
6. FLOOR DRAINAGE MUST BE SHOWN AND OF ADEQUATE SIZE FOR PROPER DRAINAGE. REFER TO MSUD's DRAIN LINE REQUIREMENTS FOR DETAILS.



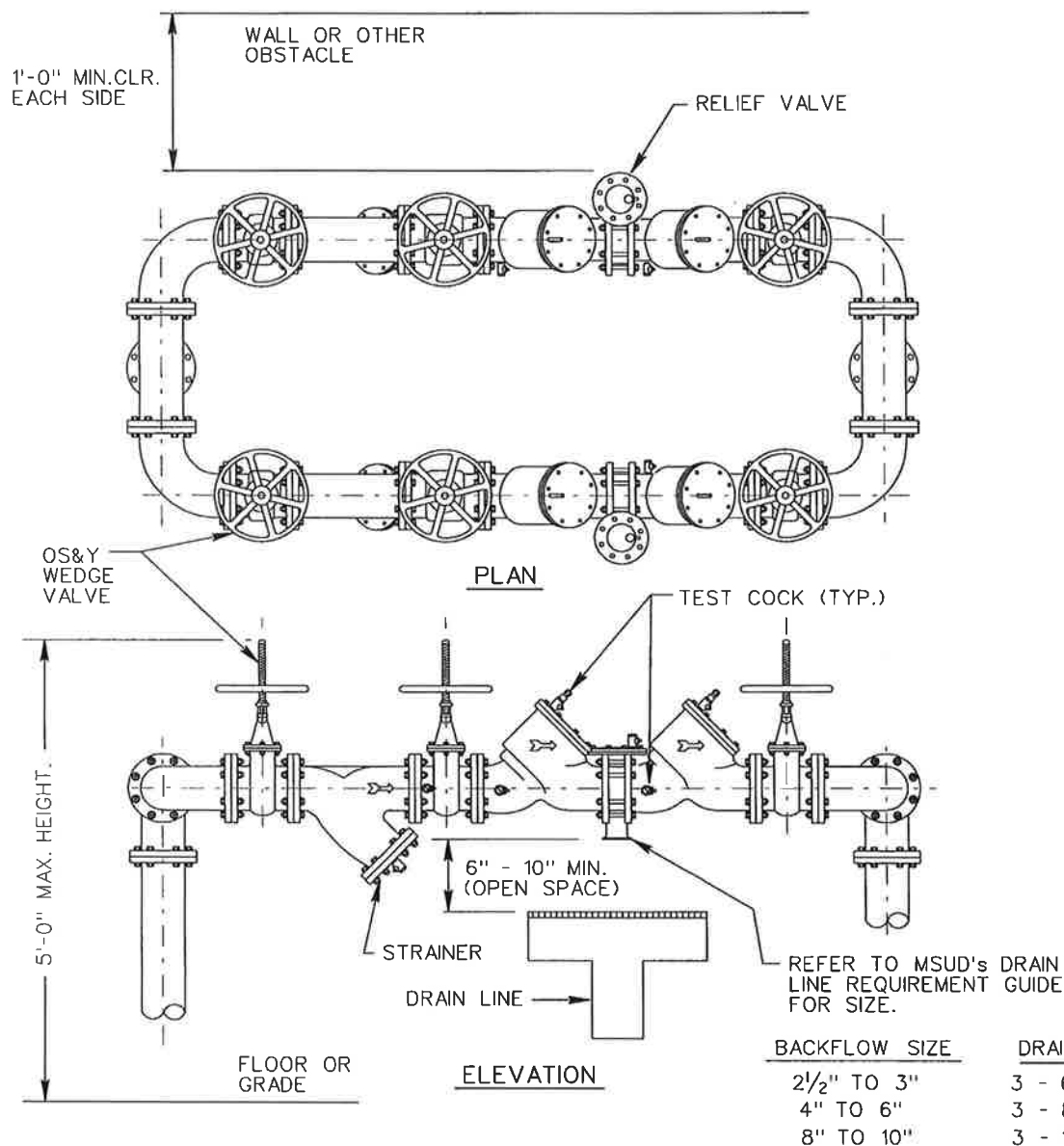
MADISON SUBURBAN UTILITY DISTRICT	
4" - 10" DOUBLE DETECTOR CHECK VALVE ASSEMBLY DUAL INSTALLATION	
JVL / BWSC	
Turner Professional Building 5100 Linbar Drive, Suite 106 Nashville, Tennessee 37211	
SCALE: NONE	SHEET NO. 9
DATE: 11/6/02	

BF-SHEET_09



M.S.U.D. REQUIRES A SCHLUMBERGER MODEL T10,
PRO READ WITH WALL MOUNT TOUCH PAD
(UNITS IN CUBIC FEET.)

NOTE: MUST ALSO SHOW SPECIFIC LOCATION AND DRAINAGE DETAILS



NOTES

ASSEMBLY SHALL BE HORIZONTALLY INSTALLED COMPLETE WITH CLEARANCES SHOWN.

OUTDOOR INSTALLATIONS SHALL BE PROVIDED WITH WEATHERPROOF ENCLOSURE AND FULL FREEZE PROTECTION. HEAT RECOMMENDED.

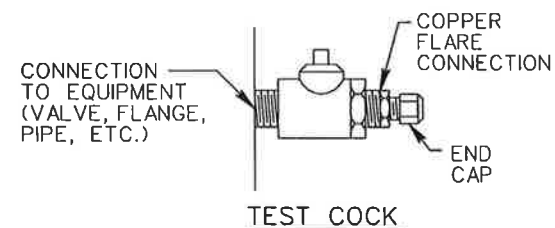
DRAIN LINE (INSIDE INSTALLATION ONLY) SHALL BE INSTALLED IN ACCORDANCE WITH THE M.S.U.D.'S INSTALLATION REQUIREMENTS.

BALL VALVES SHALL BE RESILIENT SEAT, 1/4 TURN, FULL PORT, BRONZE.

ALL DEVICES AND STRAINERS, EXCEPT THOSE MADE OF STAINLESS STEEL, SHALL BE EPOXY COATED.

PROVIDE TEST COCKS ON BOTH DEVICES WITH WATER TIGHT TEST ADAPTORS, COPPER FLARE CONNECTIONS AND END CAPS.

FLOOR DRAINAGE MUST BE SHOWN AND OF ADEQUATE SIZE FOR PROPER DRAINAGE. REFER TO MSUD'S DRAIN LINE REQUIREMENTS FOR DETAILS.



MADISON SUBURBAN UTILITY DISTRICT

2 1/2" - 10" REDUCED PRESSURE BACKFLOW PREVENTER ASSEMBLY DOUBLE INSTALLATION

JME / BWSC

Turner Professional Building
5100 Linbar Drive, Suite 106
Nashville, Tennessee 37211

SCALE: NONE

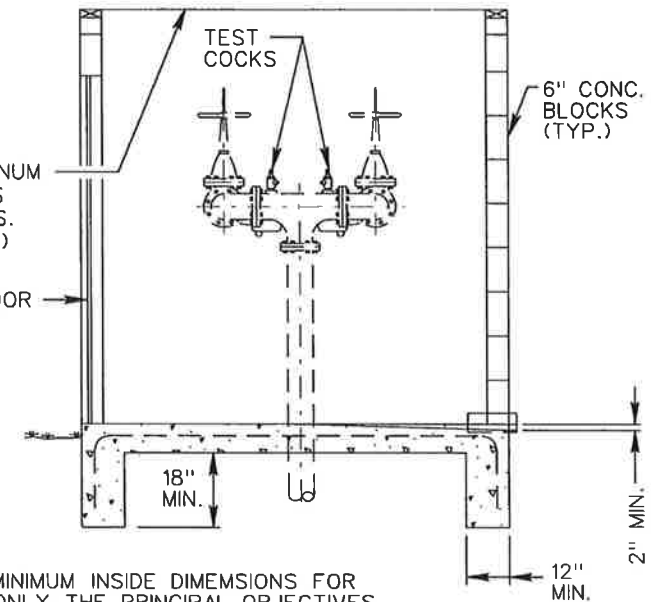
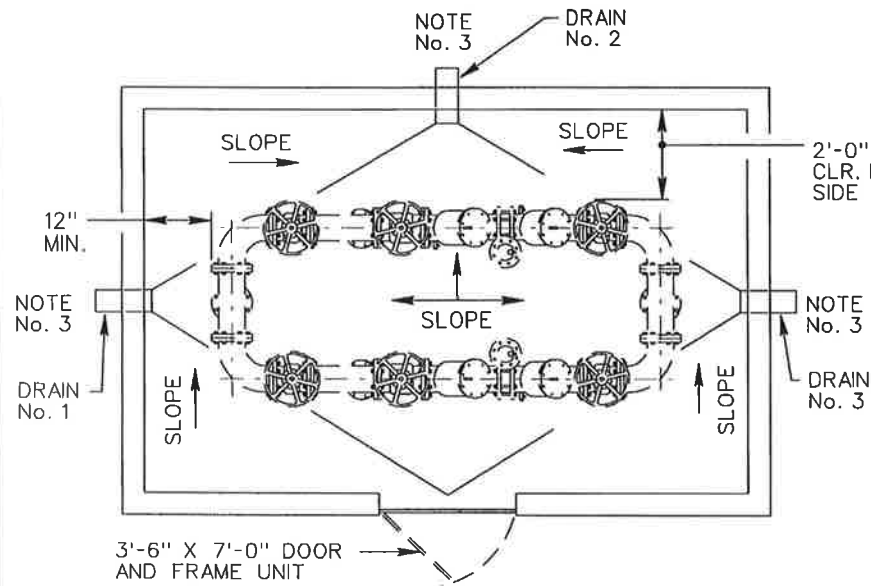
SHEET NO.

DATE: 11/06/02

10

REVISED 4/14/03

BF-SHEET_10



NOTES

1. THIS DRAWING INDICATES MINIMUM INSIDE DIMENSIONS FOR CLEARANCE AND ACCESS ONLY. THE PRINCIPAL OBJECTIVES ARE PROTECTION FOR THE INSTALLATION AND ADEQUATE CLEARANCES FOR EASE OF ACCESS AND MAINTENANCE.
- * INSULATION / HEATING IS RECOMMENDED TO PREVENT FREEZING.
- * SECURITY FASTENING MAY BE DESIRABLE IN SOME LOCATIONS.
- * THE FOOTING, SLAB, OR WALL DESIGN AND OUTSIDE FINISH IS OPTIONAL WITH OWNER. PREFABRICATED BOXES OF COMPARABLE DIMENSIONS MAY BE SUBSTITUTED, SUCH AS THE "AQUA SHIELD" OR "HOT BOX" BY COMMERCIAL INSULATION CO., INC., OR "SAFETY COVER" OR "WATERSAFE" BY GRIFFIN & CANTRELL.

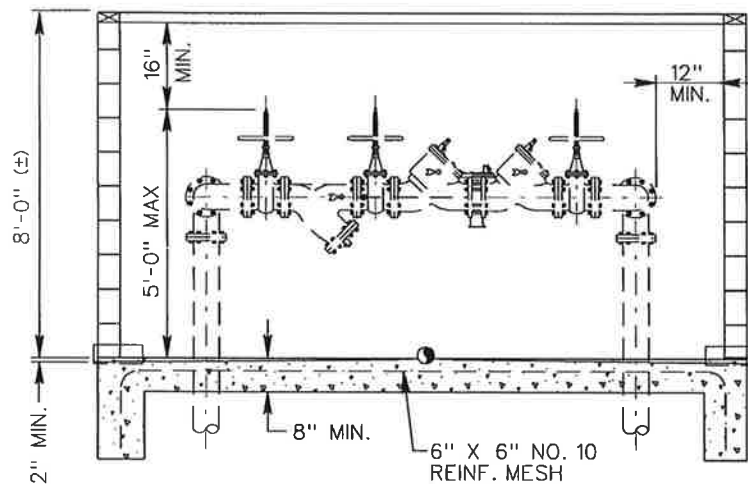
2. 5'-0" MAXIMUM FROM FLOOR TO TOP OF OS&Y VALVE
3. DRAIN WITH RODENT SCREEN INSIDE AND OUTSIDE PER M.S.U.D. REQUIREMENTS, DRAIN SIZE SHALL BE AS FOLLOWS:

BACKFLOW SIZE

2 1/2" TO 3"
4" TO 6"
8" TO 10"

DRAIN SIZE

3 - 6" DRAINS
3 - 8" DRAINS
3 - 10" DRAINS



MADISON SUBURBAN UTILITY DISTRICT

2 1/2" - 10" REDUCED PRESSURE BACKFLOW
PREVENTER ASSY. DOUBLE INSTALLATION BOX

JVE / BWSC

Turner Professional Building
5100 Linbar Drive, Suite 106
Nashville, Tennessee 37211

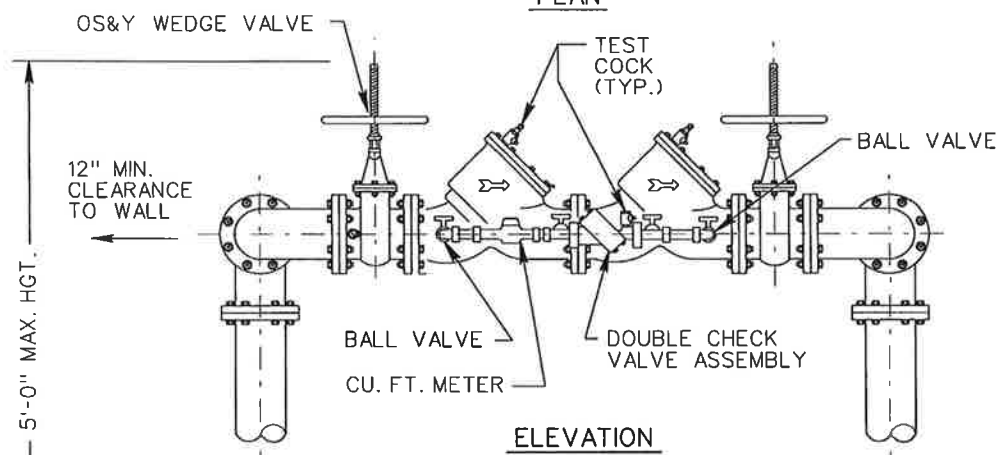
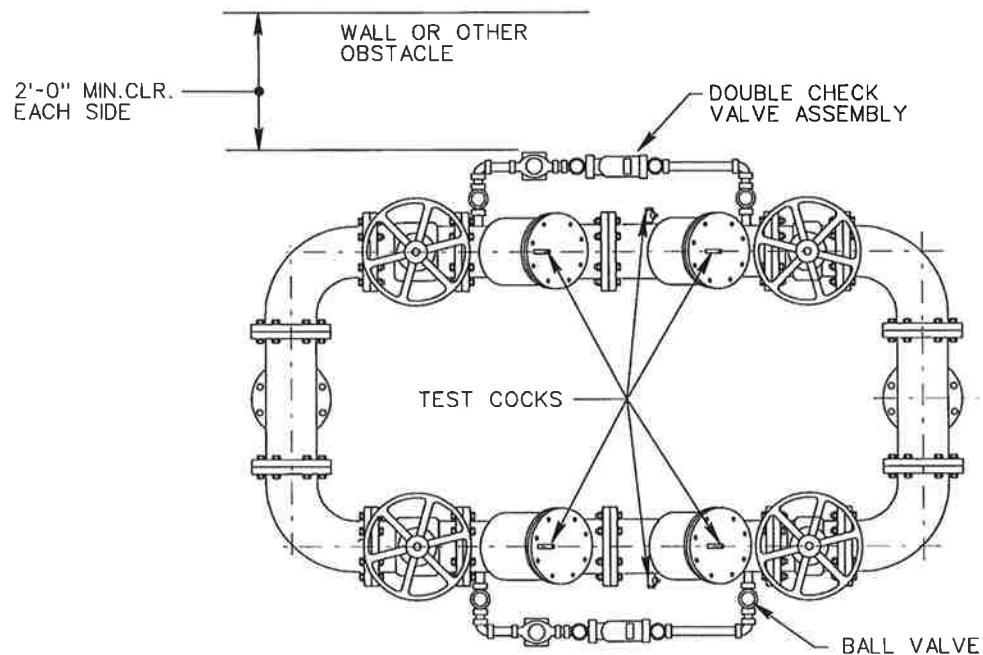
SCALE: NONE

DATE: 11/06/02

SHEET NO.

11

NOTE: MUST ALSO SHOW SPECIFIC LOCATION AND DRAINAGE DETAILS



M.S.U.D. REQUIRES A SCHLUMBERGER MODEL T10, PRO READ WITH WALL MOUNT TOUCH PAD (UNITS IN CUBIC FEET.)

NOTES

ASSEMBLY SHALL BE HORIZONTALLY INSTALLED COMPLETE WITH CLEARANCES SHOWN.

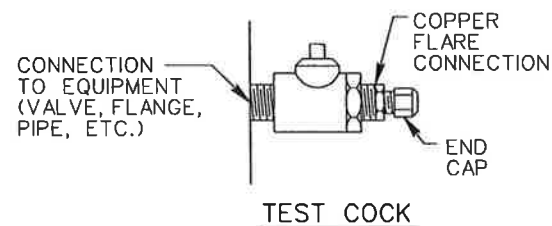
OUTDOOR INSTALLATIONS SHALL BE PROVIDED WITH WEATHERPROOF ENCLOSURE AND FULL FREEZE PROTECTION ENCLOSURE. HEAT RECOMMENDED.

ALL DEVICES, EXCEPT THOSE MADE OF STAINLESS STEEL, SHALL BE EPOXY COATED.

PROVIDE TEST COCKS ON BOTH DEVICES WITH WATER TIGHT TEST ADAPTORS, COPPER FLARE CONNECTIONS AND END CAPS.

SHUT-OFF VALVES SHALL BE RESILIENT SEAT, OS&Y, WEDGE TYPE.

FLOOR DRAINAGE MUST BE SHOWN AND OF ADEQUATE SIZE FOR PROPER DRAINAGE. (REFER TO MSUD's DRAIN LINE REQUIREMENT GUIDE.)



MADISON SUBURBAN
UTILITY DISTRICT

4" - 10" DOUBLE DETECTOR CHECK VALVE
ASSEMBLY DOUBLE INSTALLATION

JVE/BWSC

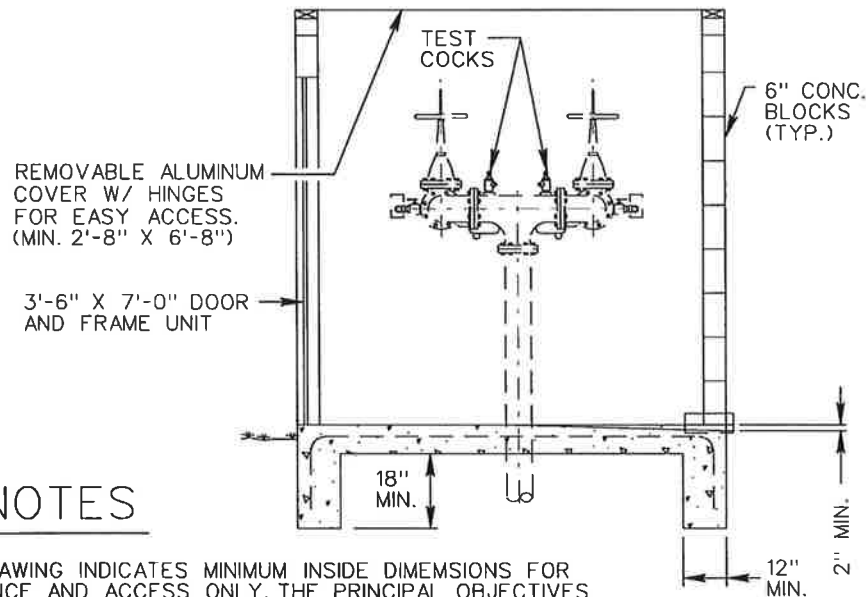
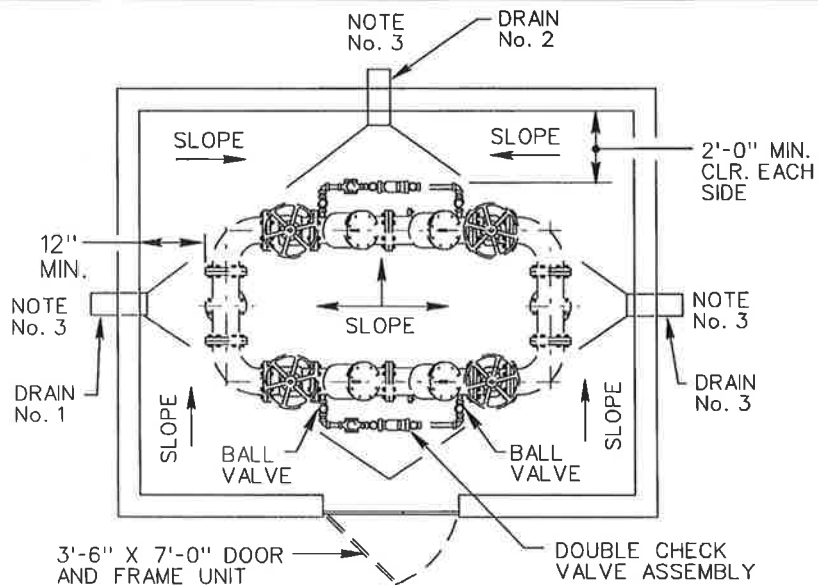
Turner Professional Building
5100 Linbar Drive, Suite 106
Nashville, Tennessee 37211

SCALE: NONE

SHEET NO.

DATE: 11/06/02

12

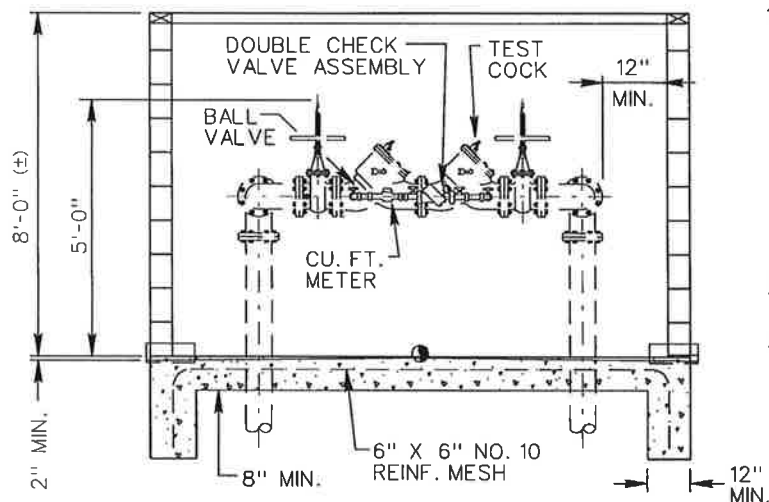


NOTES

1. THIS DRAWING INDICATES MINIMUM INSIDE DIMENSIONS FOR CLEARANCE AND ACCESS ONLY. THE PRINCIPAL OBJECTIVES ARE PROTECTION FOR THE INSTALLATION AND ADEQUATE CLEARANCES FOR EASE OF ACCESS AND MAINTENANCE. INSULATION / HEATING IS RECOMMENDED TO PREVENT FREEZING. SECURITY FASTENING MAY BE DESIRABLE IN SOME LOCATIONS. THE FOOTING, SLAB, OR WALL DESIGN AND OUTSIDE FINISH IS OPTIONAL WITH OWNER. PREFABRICATED BOXES OF COMPARABLE DIMENSIONS MAY BE SUBSTITUTED, SUCH AS THE "AQUA SHIELD" OR "HOT BOX" BY COMMERCIAL INSULATION CO., INC., OR "SAFETY COVER" OR "WATERSAFE" BY GRIFFIN & CANTRELL.

2. 5'-0" MAXIMUM FROM FLOOR TO TOP OF OS&Y VALVE
3. DRAIN WITH RODENT SCREEN INSIDE AND OUTSIDE PER M.S.U.D. REQUIREMENTS, DRAIN SIZE SHALL BE AS FOLLOWS:

BACKFLOW SIZE	DRAIN SIZE
2 1/2" TO 3"	3 - 6" DRAINS
4" TO 6"	3 - 8" DRAINS
8" TO 10"	3 - 10" DRAINS



M.S.U.D. REQUIRES A SCHLUMBERGER MODEL T10, PRO READ WITH WALL MOUNT TOUCH PAD (UNITS IN CUBIC FEET.)

MADISON SUBURBAN UTILITY DISTRICT

4" - 10" DOUBLE DETECTOR CHECK
VALVE ASSY. DOUBLE INSTALLATION BOX

JVE / BWSC

Turner Professional Building
5100 Linbar Drive, Suite 106
Nashville, Tennessee 37211

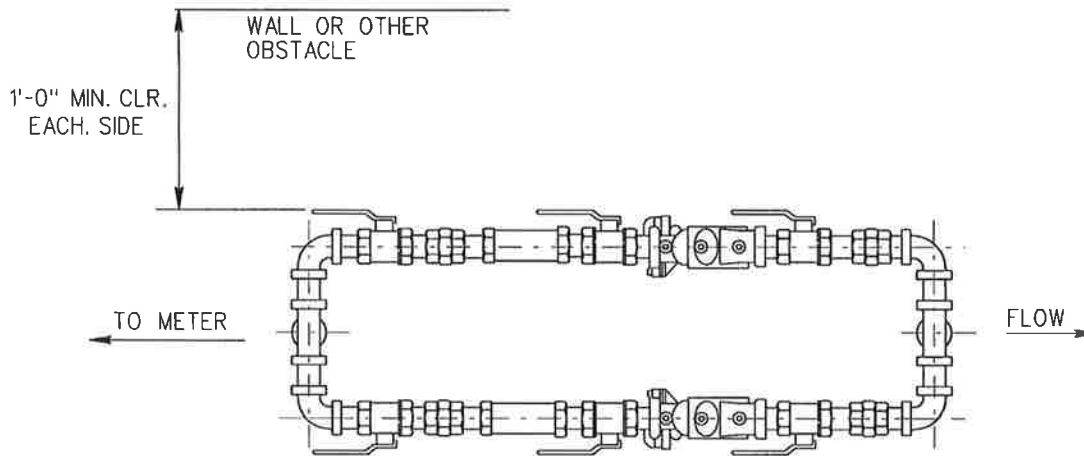
SCALE: NONE

DATE: 11/06/02

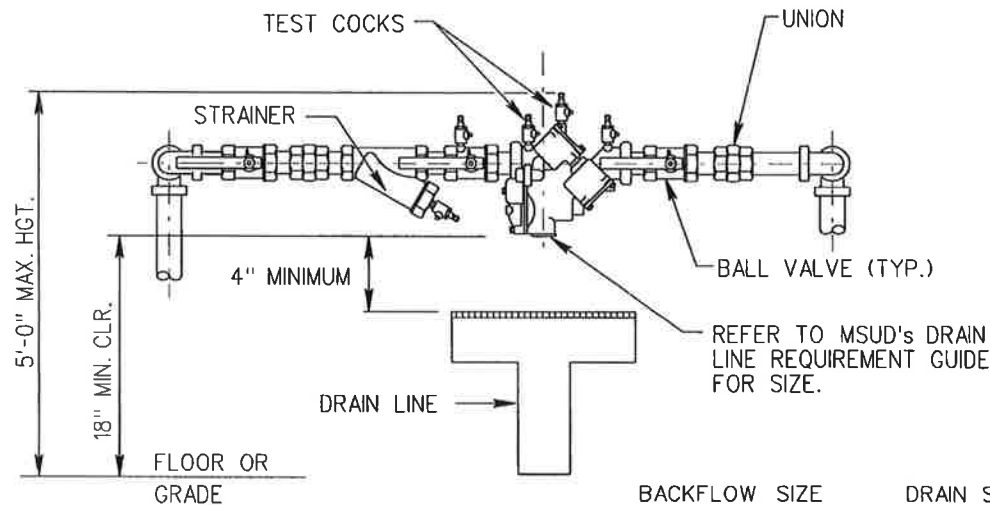
SHEET NO.

13

NOTE: MUST ALSO SHOW SPECIFIC LOCATION AND DRAINAGE DETAILS



PLAN



ELEVATION

BACKFLOW SIZE

2 1/2" TO 3"
4" TO 6"
8" TO 10"

DRAIN SIZE

3 - 6" DRAINS
3 - 8" DRAINS
3 - 10" DRAINS

NOTES

ASSEMBLY SHALL BE HORIZONTALLY INSTALLED COMPLETE WITH CLEARANCES SHOWN.

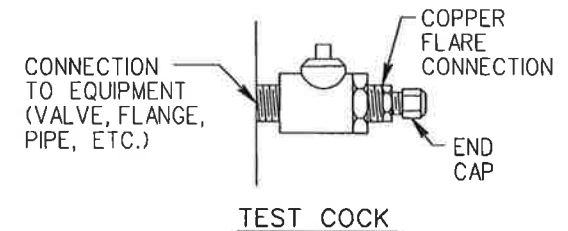
OUTDOOR INSTALLATIONS SHALL BE PROVIDED WITH WEATHERPROOF ENCLOSURE AND FULL FREEZE PROTECTION ENCLOSURE. HEAT RECOMMENDED.

DRAIN LINE (INSIDE INSTALLATION ONLY) SHALL BE INSTALLED IN ACCORDANCE WITH THE M.S.U.D.'S INSTALLATION REQUIREMENTS.

BALL VALVES SHALL BE RESILENT SEAT, 1/4 TURN, FULL PORT, BRONZE.

PROVIDE TEST COCKS ON BOTH DEVICES WITH WATER TIGHT TEST ADAPTORS, COPPER FLARE CONNECTIONS AND END CAPS.

FLOOR DRAINAGE MUST BE SHOWN AND OF ADEQUATE SIZE FOR PROPER DRAINAGE. (REFER TO MSUD's DRAIN LINE REQUIREMENT GUIDE.)



MADISON SUBURBAN
UTILITY DISTRICT

3/4" - 2" REDUCED PRESSURE BACKFLOW
PREVENTER ASSY. DOUBLE INSTALLATION

JVE / BWSC

Turner Professional Building
5100 Linbar Drive, Suite 106
Nashville, Tennessee 37211

SCALE: NONE

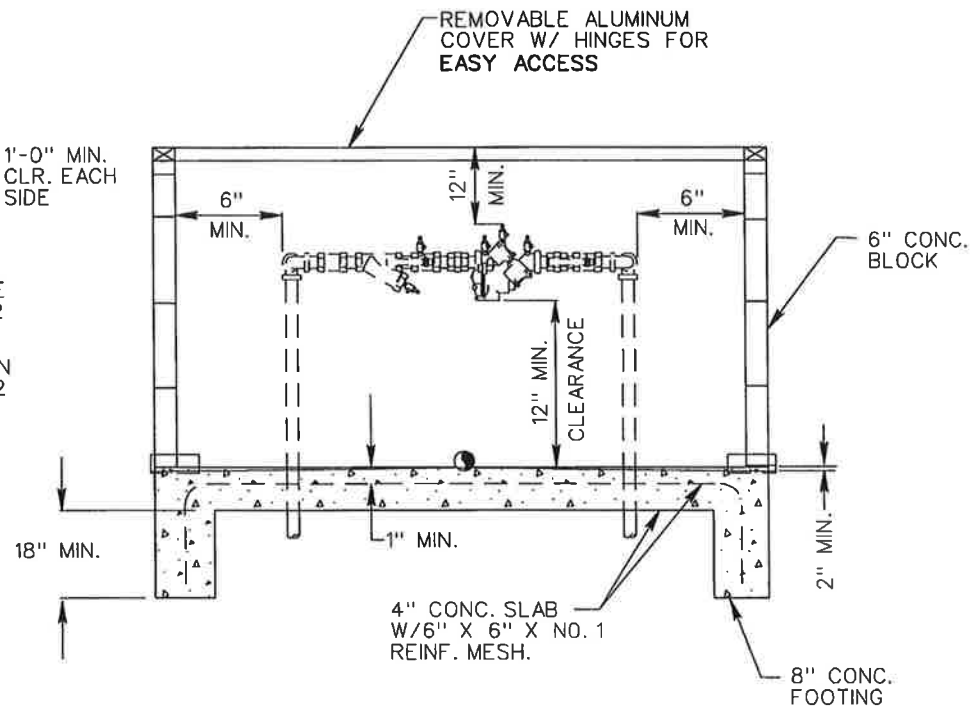
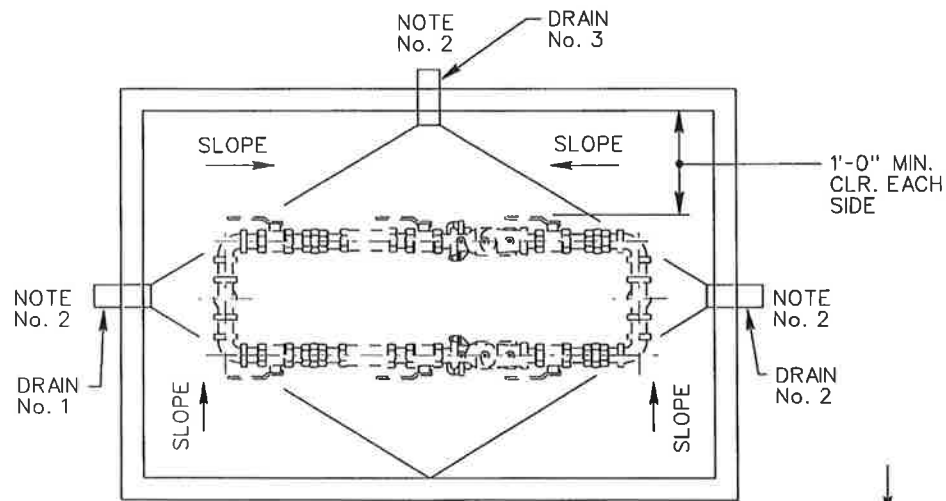
DATE: 11/06/02

SHEET NO.

14

REVISED 4/14/03

BF-SHEET_14



NOTES

1. THIS DRAWING INDICATES MINIMUM INSIDE DIMENSIONS FOR CLEARANCE AND ACCESS ONLY. THE PRINCIPAL OBJECTIVES ARE PROTECTION FOR THE INSTALLATION AND ADEQUATE CLEARANCES FOR EASE OF ACCESS AND MAINTENANCE. INSULATION / HEATING IS RECOMMENDED TO PREVENT FREEZING. SECURITY FASTENING MAY BE DESIRABLE IN SOME LOCATIONS. THE FOOTING, SLAB, OR WALL DESIGN AND OUTSIDE FINISH IS OPTIONAL WITH OWNER. PREFABRICATED BOXES OF COMPARABLE DIMENSIONS MAY BE SUBSTITUTED, SUCH AS THE "AQUA SHIELD" OR "HOT BOX" BY COMMERCIAL INSULATION CO., INC., OR, "SAFETY COVER" OR "WATERSAFE" BY GRIFFIN & CANTRELL.

2. DRAIN WITH RODENT SCREEN INSIDE AND OUTSIDE PER M.S.U.D. REQUIREMENTS. DRAIN SIZE SHALL BE AS FOLLOWS:

BACKFLOW SIZE

$\frac{3}{4}$ " TO 1"

$1\frac{1}{4}$ " TO 2"

DRAIN SIZE

3 - 3" DRAINS

3 - 6" DRAINS

MADISON SUBURBAN UTILITY DISTRICT

$\frac{3}{4}$ " - 2" REDUCED PRESSURE BACKFLOW
PREVENTER ASSY. DOUBLE INSTALLATION BOX

JVE / BWSC

Turner Professional Building
5100 Linbar Drive, Suite 106
Nashville, Tennessee 37211

SCALE: NONE

DATE: 11/06/02

SHEET NO.

15