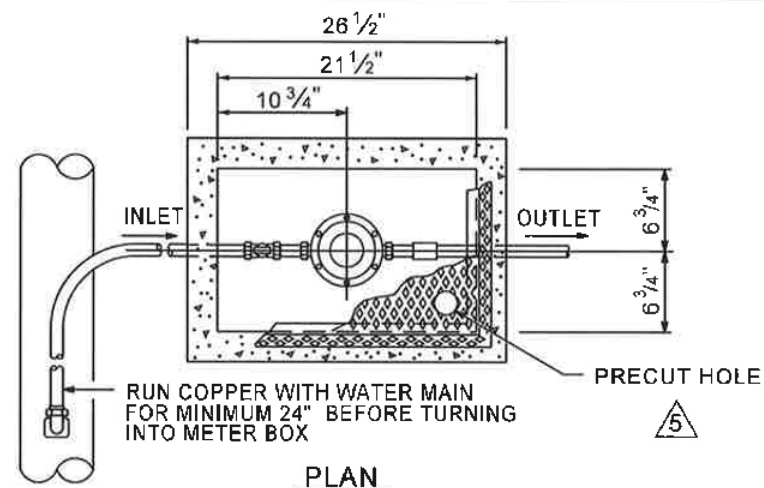
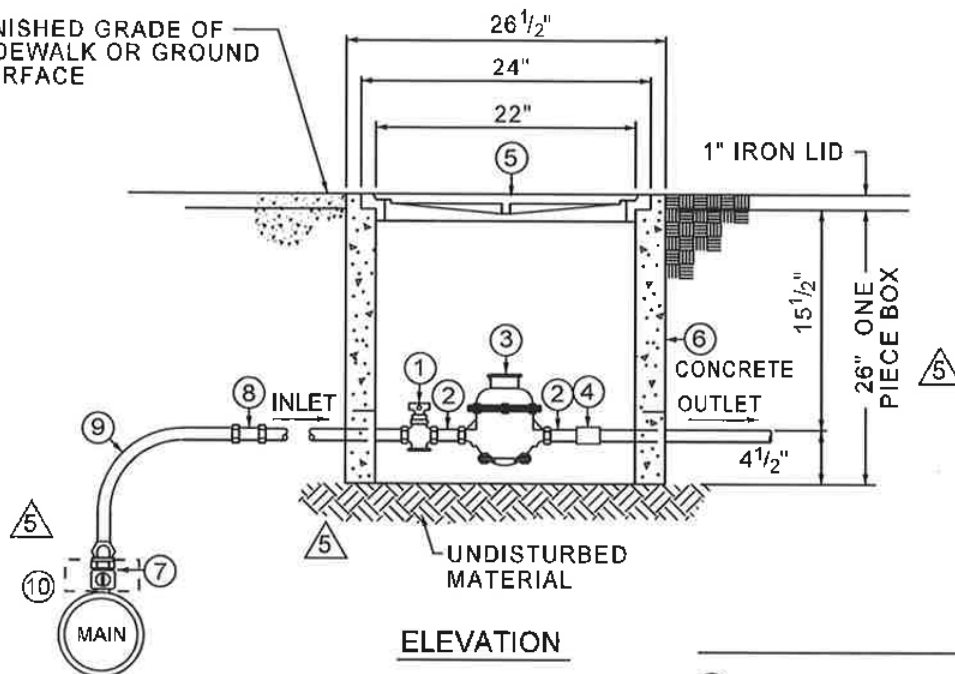


FINISHED GRADE OF
SIDEWALK OR GROUND
SURFACE



MATERIAL SCHEDULE

NOTES: 5

1. ALL WORK TO BE INSPECTED BY M.S.U.D. AFTER WORK IS COMPLETE AND BEFORE BACKFILLING. TAPS WILL BE MADE WITHIN TWO WEEKS, WEATHER PERMITTING. 5
2. ALL WATER METERS SHALL BE PLACED OUTSIDE OF ANY PAVED AREA SUCH AS DRIVEWAYS, ROADS, ETC.
3. CONNECTIONS:
ALL COPPER CONNECTIONS AND FITTINGS WILL BE FLARE TYPE. USE TEFLON TAPE OR JOINT COMPOUND ON ALL THREADED CONNECTIONS.
4. WASHERS WILL BE FIBER. 5
5. COPPER FROM MAIN TO METER SHALL BE ONE CONTINUOUS PIECE OF K COPPER.
6. ALL BOLTS SHALL BE STAINLESS STEEL.

- 1 3/4" CURB STOP
MUELLER CO. H-15175
OR FORD CAT. No. Z21-333
OR McDONALD 4711
- 2 3/4" x 2 1/2" BRASS METER COUPLING (2)
- 3 5/8" x 3/4" METER NEPTUNE RADIO
READ WITH ANTENNA.
- 4 3/4" BRASS COUPLING (OUTLET)
- 5 C.I. METER BOX FRAME AND COVER
WITH PRECUT HOLE AND CAP
JOHN BOUCHARD #8110 NASHVILLE
STANDARD OR APPROVED EQUAL
WITH HOLE PRECUT INTO BOX AND
PLASTIC CAP ON IT. (SHALL NOT BE
IMPRINTED WITH THE NAME "METRO")
- 6 3/4" METER BOX, ONE PIECE PRE-CAST
CONCRETE.
- 7 3/4" CORPORATION STOP
MUELLER CO. H-15020
OR McDONALD 4701L WITH
4776 90° BEND.
- 8 3/4" COUPLING, THREE PART UNION FLARE
COPPER TO COPPER (NEEDED ONLY
TO USE UP ODD LENGTHS OF PIPE OVER
60' OR WHEN SERVICE IS OVER 100' LONG.
INSTALLED OUTSIDE STREET PAVING ONLY)
- 9 SERVICE MATERIAL (SHEPARD HOOK)
3/4" 'K' TYPE SOFT COPPER TUBING 5
- 10 (TAPPING SADDLE) C-900 MAIN CONNECTIONS
ONLY. SMITH BLAIR #313 DOUBLE STRAP
WITH 3/4" 'CC' THREADS. (FOR P.V.C. ONLY)

MADISON SUBURBAN UTILITY DISTRICT

5/8" - 3/4" METER INSTALLATION

JVE / BWSC

Turner Professional Building
5100 Linbar Drive, Suite 106
Nashville, Tennessee 37211

SCALE: N.T.S.

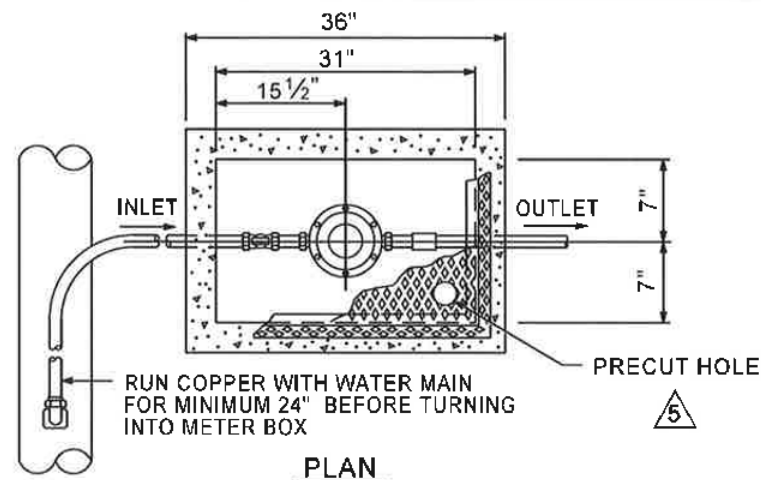
SHEET NO.

DATE: 12/20/02

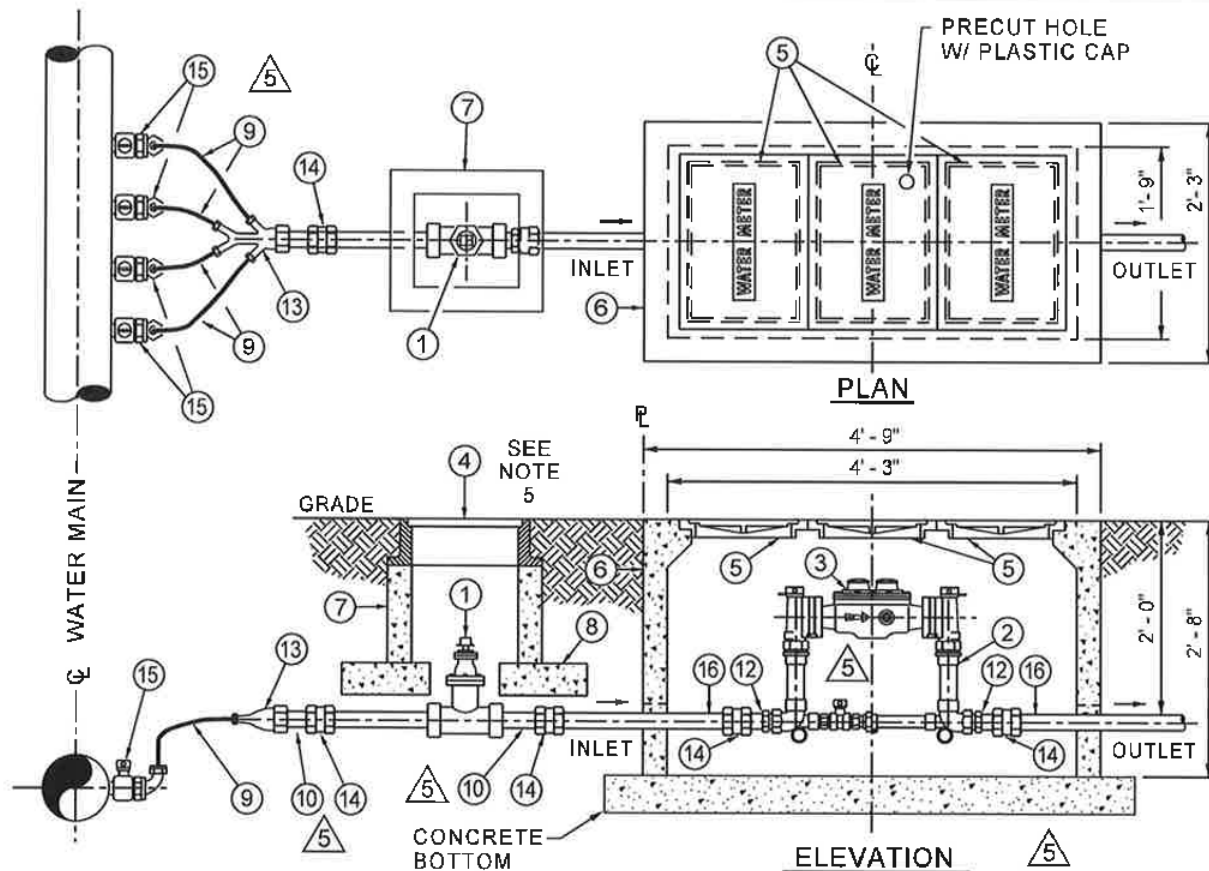
1

REVISED: 8/2/19 PER M.S.U.D. 5

M_SHEET_01



M SHEET 02



MATERIAL SCHEDULE

- ① 2" GATE VALVE (1) OPEN LEFT, RESILIENT WEDGE 2" SQUARE OPERATING NUT
- ② FORD VV77-12B-11-77 2" COPPERSETTER (1) WITH BY-PASS OR APPROVED EQUAL F.I.P. INLET AND AND OUTLET SERVICE CONNECTION ANGLE METER VALVES INLET AND OUTLET 12" HEIGHT
- ③ 2" METER "NEPTUNE" OR "OCTAVE" RADIO READ. WITH ANTENNA SHALL BE REQUIRED BY M.S.U.D. (CUSTOMER SHALL PICK UP FROM M.S.U.D.). CUSTOMER IS RESPONSIBLE FOR METER DELIVERY. 5
- ④ C.I. VALVE BOX FRAME AND COVER (1) JOHN BOUCHARD #8006 NASHVILLE STANDARD OR APPROVED EQUAL
- ⑤ C.I. METER BOX FRAME AND COVER (3) ONE (1) WITH PRECUT HOLE. JOHN BOUCHARD #8110 NASHVILLE STANDARD OR APPROVED EQUAL
- ⑥ 2" METER BOX W/BASE, PRE-CAST CONCRETE
- ⑦ VALVE BOX, PRE-CAST CONCRETE (1)
- ⑧ 12"x12"x4" CONCRETE VALVE BOX FOOTING (4)
- ⑨ SERVICE MATERIAL 1" 'K' TYPE SOFT COPPER TUBING
- ⑩ 2" X 20" BRASS NIPPLE
- ⑪ 2" THREADED BRASS COUPLING. 5
- ⑫ CONNECTIONS TO COPPERSETTER: USE THREADED PIPE, BRASS COUPLING, AND SMALL BRASS NIPPLE.

EXISTING MAIN ONLY

- ⑬ FOUR BRANCH HOOK-UP McDONALD 08Y4MC MUELLER H-15351. INLETS: 1" COPPER FLARE OUTLETS: 2" MIP THREAD
- ⑭ 2" BRASS THREADED COUPLING, FEMALE x FEMALE.
- ⑮ 4 - 1" CORPORATION STOPS. (MINIMUM 18" APART) McDONALD 4701 W/ 4776S 90° BEND MUELLER H-15020
- ⑯ BRASS. 5

MADISON SUBURBAN UTILITY DISTRICT

2" METER INSTALLATION

JVE / BWSC

Turner Professional Building
5100 Linbar Drive, Suite 106
Nashville, Tennessee 37211

SCALE: N.T.S.

SHEET NO.

DATE: 12/20/02

3

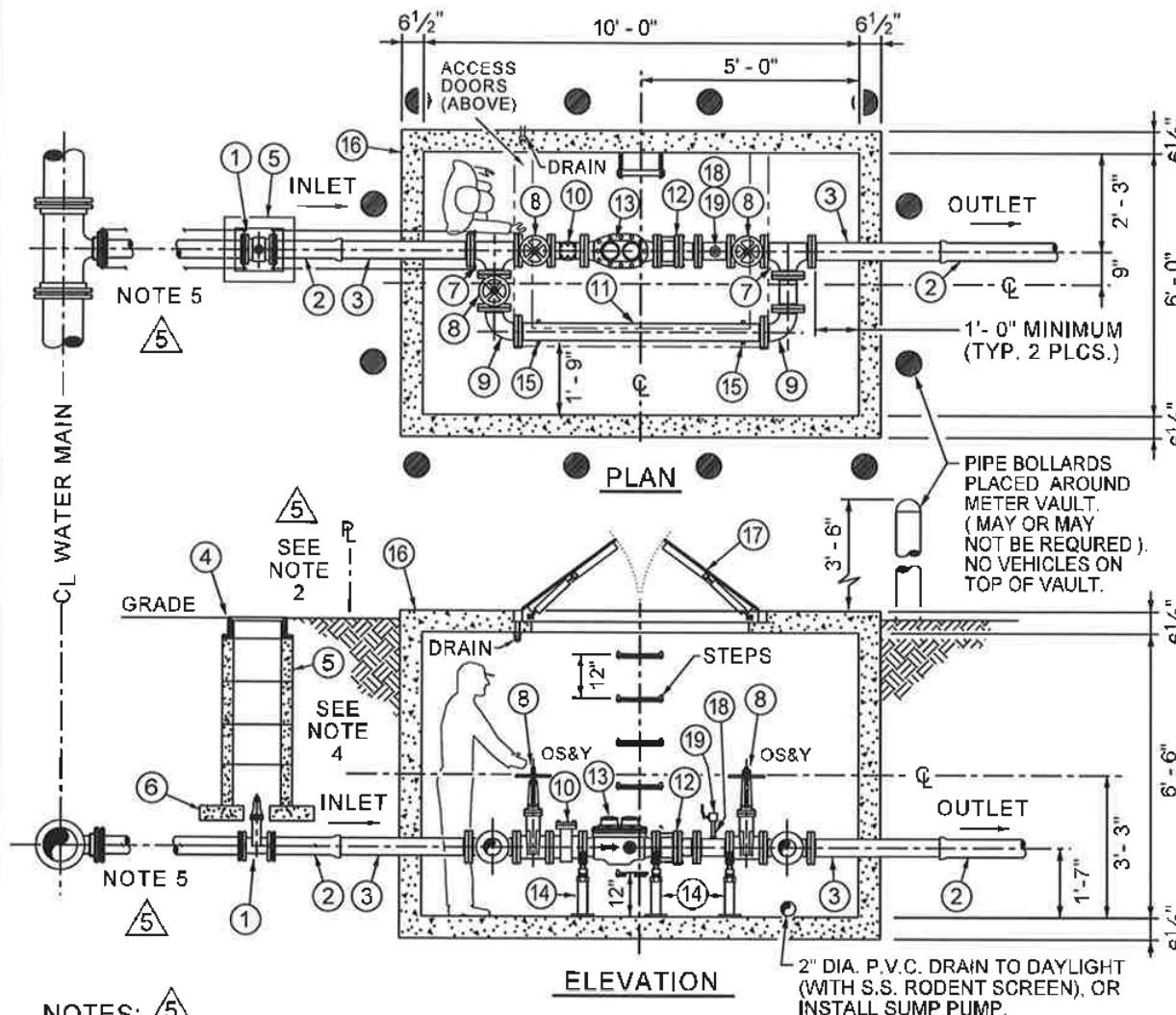
REVISED: 8/2/19 PER M.S.U.D. 5

NOTES: 5

1. ALL WORK TO BE INSPECTED BY M.S.U.D. AFTER WORK IS COMPLETE AND BEFORE BACKFILLING.
2. ALL WATER METERS SHALL BE PLACED OUTSIDE OF ANY PAVED AREA SUCH AS DRIVEWAYS, ROADS, ETC.
3. CONNECTIONS:
ALL COPPER CONNECTIONS AND FITTINGS WILL BE FLARE TYPE. USE TEFLON TAPE OR JOINT COMPOUND ON ALL THREADED CONNECTIONS.
4. WASHERS WILL BE FIBER OR RUBBER
5. THERE SHALL BE A MINIMUM DISTANCE OF 3'-0" BETWEEN THE OUTER EDGE OF THE METER BOX AND ANY OTHER UTILITIES, OR ABOVE-GROUND OR BELOW-GROUND STRUCTURES.
6. CONTACT M.S.U.D. FOR INFORMATION ON ITEM 3 IN THE MATERIAL SCHEDULE ABOVE. (2" NEPTUNE METER)

7. COPPER LINE SHALL BE ONE PIECE FROM CORPORATION STOP TO MANIFOLD. 5

M_SHEET_03



MATERIAL SCHEDULE

- ① 4" GATE VALVE M.J. (1) OPEN LEFT, RESILIENT WEDGE, 2" SQUARE OPER. NUT.
- ② 4" CLASS 52 DUCTILE IRON PIPE
- ③ 4" - F.E.P.E. DUCTILE IRON PIPE (2)
- ④ C.I. VALVE BOX FRAME AND COVER (1) JOHN BOUCHARD #8006 NASHVILLE STANDARD OR APPROVED EQUAL
- ⑤ VALVE BOX, PRE-CAST CONCRETE (1)
- ⑥ 12" x 12" x 4" CONCRETE VALVE BOX FOOTING (4)
- ⑦ 4" FLANGED TEE (2)
- ⑧ 4" GATE VALVE, FLANGED, OS&Y (3) OPEN LEFT, RESILIENT WEDGE HANDWHEEL OPERATOR
- ⑨ 4" - 90° FLANGED BEND (2)
- ⑩ 4" BADGER BRONZE PLATE STRAINER WITH STAINLESS STEEL SCREEN OR APPROVED EQUAL
- ⑪ 4" CLASS 52 DUCTILE IRON PIPE
- ⑫ 4" FLANGED DISMANTLING JOINT, RESTRAINED (1)
- ⑬ 4" METER NEPTUNE RADIO READ WITH ANTENNA. INDICATING IN CUBIC FEET - DUAL REGISTERS. "NEPTUNE - TRU/FLO COMPOUND METER" (CUSTOMER SHALL PICK UP FROM M.S.U.D.)
- ⑭ STANDON MODEL S-96 CRADLE SUPPORT (3) OR APPROVED EQUAL
- ⑮ STANDON MODEL S-92 SADDLE SUPPORT (2) OR APPROVED EQUAL
- ⑯ 4" METER BOX W/BASE, PRE-CAST CONCRETE, WITH STEPS, 12" O.C. PER O.S.H.A. 1910.27. AS APPROVED BY M.S.U.D. BOX. SHALL BE ONE PIECE OR TWO PIECE.
- ⑰ "HALLIDAY PRODUCTS" MODEL H2W ACCESS DOOR 5'-0" X 4'-0" WITH HOLD OPEN ARM, SAFETY GRATE, AND PRECUT HOLE W/ PLASTIC CAP. H-20 RATED OR EQUAL APPROVED BY M.S.U.D.
- ⑱ 2" X 8" BRASS NIPPLE
- ⑲ 2" STAINLESS STEEL BALL VALVE

NOTES: ⑤

1. ALL WORK TO BE INSPECTED BY M.S.U.D. AFTER WORK IS COMPLETE AND BEFORE BACKFILLING.
2. ALL WATER METERS SHALL BE PLACED OUTSIDE OF ANY PAVED AREA SUCH AS DRIVEWAYS, ROADS, ETC.
3. CONTRACTOR SHALL PROVIDE ANY AND ALL PERMITS TO M.S.U.D. BEFORE THE START OF WORK.
4. THERE SHALL BE A MINIMUM DISTANCE OF 3'-0" BETWEEN THE OUTER EDGE OF THE METER BOX AND ANY OTHER UTILITIES, OR ABOVE-GROUND OR BELOW-GROUND STRUCTURES.
5. JOINT RESTRAINT:
ALL FITTINGS WILL BE RODDED AND MEGA-LUGGED FROM

THE MAIN TO THE FIRST GATE VALVE IN METER VAULT. THE RODS SHALL BE 3/4" DIAMETER FULLY THREADED STAINLESS STEEL RODS WITH STAINLESS STEEL ALL BOLTS TO BE STAINLESS STEEL.

7. FITTINGS:
ALL FITTINGS INSIDE VAULT WILL BE FLANGED FITTINGS. ALL FITTINGS OUTSIDE VAULT WILL BE MECHANICAL JOINT FITTINGS.
8. CONTACT M.S.U.D. FOR INFORMATION ON ITEM 13 IN THE MATERIAL SCHEDULE ABOVE. (6" METER PICK-UP)
9. BACKFLOW MUST BE READY FOR INSPECTION BEFORE ANY METER WILL BE PROVIDED.

MADISON SUBURBAN UTILITY DISTRICT

4" METER INSTALLATION

JVE / BWSC

Turner Professional Building
5100 Linbar Drive, Suite 106
Nashville, Tennessee 37211

SCALE: N.T.S.

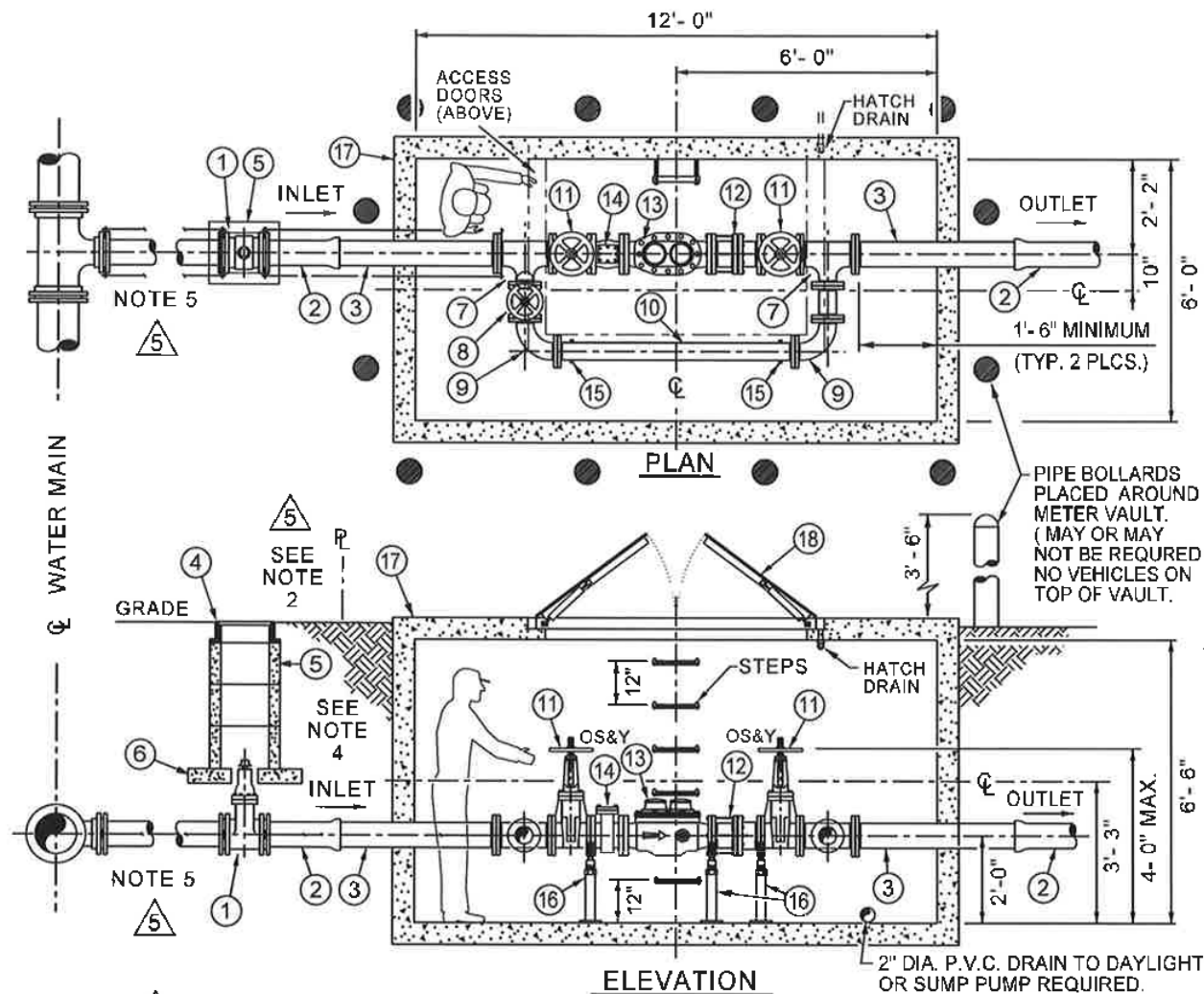
SHEET NO.

DATE: 12/20/02

5

REVISED: 5/14/19 PER M.S.U.D. ⑤

M_SHEET_05



NOTES: 5

1. ALL WORK TO BE INSPECTED BY M.S.U.D. AFTER WORK IS COMPLETE AND BEFORE BACKFILLING.
2. ALL WATER METERS SHALL BE PLACED OUTSIDE OF ANY PAVED AREA SUCH AS DRIVEWAYS, ROADS, ETC.
3. CONTRACTOR SHALL PROVIDE ANY AND ALL PERMITS TO M.S.U.D. BEFORE THE START OF WORK.
4. THERE SHALL BE A MINIMUM DISTANCE OF 3'-0" BETWEEN THE OUTER EDGE OF THE METER BOX AND ANY OTHER UTILITIES, OR ABOVE-GROUND OR BELOW-GROUND STRUCTURES.
5. JOINT RESTRAINT:
ALL FITTINGS WILL BE RODDED AND MEGA-LUGGED FROM

THE MAIN TO THE FIRST GATE VALVE IN METER VAULT. THE RODS SHALL BE 3/4" DIAMETER FULLY THREADED STAINLESS STEEL RODS WITH STAINLESS STEEL NUTS. ALL BOLTS TO BE STAINLESS STEEL.

6. FITTINGS:
ALL FITTINGS INSIDE VAULT WILL BE FLANGED FITTINGS. ALL FITTINGS OUTSIDE VAULT WILL BE MECHANICAL JOINT FITTINGS.
7. CONTACT M.S.U.D. FOR INFORMATION ON ITEM 13 IN THE MATERIAL SCHEDULE ABOVE. (6" METER PICK-UP)
8. BACKFLOW MUST BE READY FOR INSPECTION BEFORE ANY METER WILL BE PROVIDED.

MATERIAL SCHEDULE

- 1 6" GATE VALVE M.J. (1) OPEN LEFT, RESILIENT WEDGE, 2" SQUARE OPER. NUT.
- 2 6" CLASS 52 DUCTILE IRON PIPE (2)
- 3 6" - F.E.P.E. CLASS 52 DUCTILE IRON PIPE (2)
- 4 C.I. VALVE BOX FRAME AND COVER (1) JOHN BOUCHARD #8006 NASHVILLE STANDARD OR APPROVED EQUAL
- 5 VALVE BOX, PRE-CAST CONCRETE (1)
- 6 12" x 12" x 4" CONCRETE VALVE BOX FOOTING (4)
- 7 6" x 6" x 4" FLANGED REDUCING TEE (2)
- 8 4" GATE VALVE, FLANGED, OS&Y (1) OPEN LEFT, RESILIENT WEDGE HANDWHEEL OPERATOR
- 9 4" - 90° FLANGED BEND (2)
- 10 4" CLASS 52 DUCTILE IRON PIPE
- 11 6" GATE VALVE, FLANGED, OS&Y (2) OPEN LEFT, RESILIENT WEDGE HANDWHEEL OPERATOR
- 12 6" FLANGED DISMANTLING JOINT, RESTRAINED (1)
- 13 6" METER "NEPTUNE" OR "OCTAVE" RADIO READ. WITH ANTENNA SHALL WILL BE REQUIRED BY M.S.U.D. (CUSTOMER SHALL PICK UP FROM M.S.U.D.). CUSTOMER IS RESPONSIBLE FOR METER DELIVERY.
- 14 6" BRONZE PLATE STRAINER OR "OCTAVE" WITH STAINLESS STEEL SCREEN. - MAY OR MAY NOT BE REQUIRED DEPENDING ON METER TYPE.
- 15 STANDON MODEL S-92 SADDLE SUPPORT (2) OR APPROVED EQUAL.
- 16 STANDON MODEL S-96 CRADLE SUPPORT (3) OR APPROVED EQUAL.
- 17 6" METER BOX W/BASE, PRE-CAST CONCRETE, WITH STEPS, 12" O.C. PER O.S.H.A. 1910.27. AS APPROVED BY M.S.U.D. BOX SHALL BE ONE PIECE OR TWO PIECE.
- 18 "HALLIDAY PRODUCTS" MODEL H2W ACCESS DOOR 6'-0" X 4'-0" WITH HOLD OPEN ARM, SAFETY GRATE, AND PRECUT HOLE W/PLASTIC CAP. H-20 RATED OR EQUAL APPROVED BY M.S.U.D.

MADISON SUBURBAN UTILITY DISTRICT

6" METER INSTALLATION

JVE / BWSC

Turner Professional Building
5100 Linbar Drive, Suite 106
Nashville, Tennessee 37211

SCALE: N.T.S.

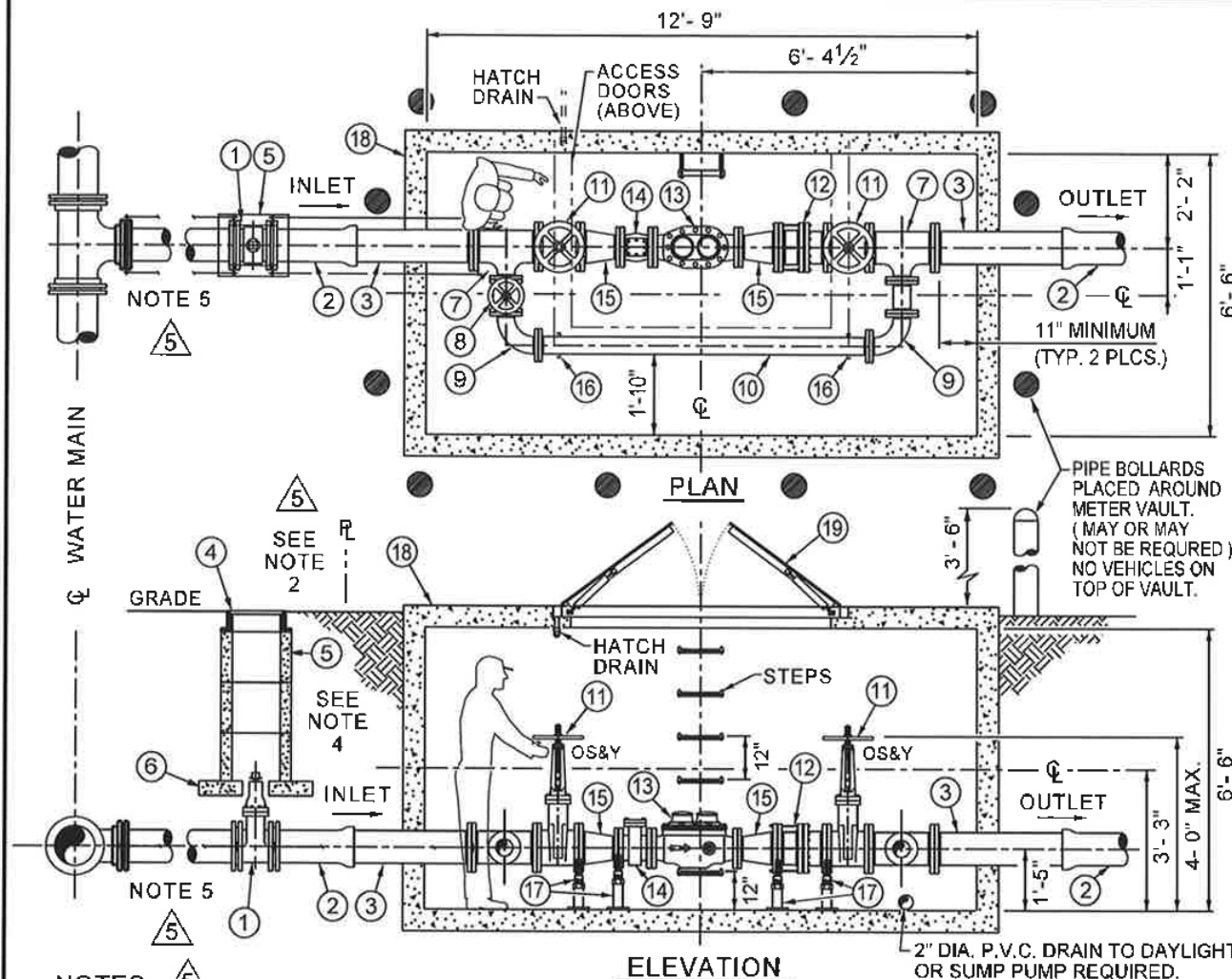
SHEET NO.

DATE: 12/20/02

6

REVISED: 5/14/19 PER M.S.U.D. 5

M_SHEET_06



NOTES: 5

1. ALL WORK TO BE INSPECTED BY M.S.U.D. AFTER WORK IS COMPLETE AND BEFORE BACKFILLING.
2. ALL WATER METERS SHALL BE PLACED OUTSIDE OF ANY PAVED AREA SUCH AS DRIVEWAYS, ROADS, ETC.
3. CONTRACTOR SHALL PROVIDE ANY AND ALL PERMITS TO M.S.U.D. BEFORE THE START OF WORK.
4. THERE SHALL BE A MINIMUM DISTANCE OF 3'-0" BETWEEN THE OUTER EDGE OF THE METER BOX AND ANY OTHER UTILITIES, OR ABOVE-GROUND OR BELOW-GROUND STRUCTURES.
5. JOINT RESTRAINT:
ALL FITTINGS WILL BE RODDED AND MEGA-LUGGED FROM

THE MAIN TO THE FIRST GATE VALVE IN METER VAULT. THE RODS SHALL BE 3/4" DIAMETER FULLY THREADED STAINLESS STEEL RODS WITH STAINLESS STEEL NUTS. ALL BOLTS TO BE STAINLESS STEEL.

6. FITTINGS:
ALL FITTINGS INSIDE VAULT WILL BE FLANGED FITTINGS. ALL FITTINGS OUTSIDE VAULT WILL BE MECHANICAL JOINT FITTINGS.
7. CONTACT M.S.U.D. FOR INFORMATION ON ITEM 13 IN THE MATERIAL SCHEDULE ABOVE. (6 x 8" METER PICK-UP)
8. BACKFLOW MUST BE READY FOR INSPECTION BEFORE ANY METER WILL BE PROVIDED.

MATERIAL SCHEDULE

- ① 8" GATE VALVE M.J. (1) OPEN LEFT, RESILIENT WEDGE, 2" SQUARE OPER. NUT.
- ② 8" CLASS 52 DUCTILE IRON PIPE (2)
- ③ 8" - F.E.P.E. CLASS 52 DUCTILE IRON PIPE (2)
- ④ C.I. VALVE BOX FRAME AND COVER (1) JOHN BOUCHARD #8006 NASHVILLE STANDARD OR APPROVED EQUAL
- ⑤ VALVE BOX, PRE-CAST CONCRETE (1)
- ⑥ 12" x 12" x 4" CONCRETE VALVE BOX FOOTING (4)
- ⑦ 8" x 8" x 6" FLANGED REDUCING TEE (2)
- ⑧ 6" GATE VALVE, FLANGED, OS&Y (1) OPEN LEFT, RESILIENT WEDGE HANDWHEEL OPERATOR
- ⑨ 6" - 90° FLANGED BEND (2)
- ⑩ 6" CLASS 52 DUCTILE IRON PIPE
- ⑪ 8" GATE VALVE, FLANGED, OS&Y (2) OPEN LEFT, RESILIENT WEDGE HANDWHEEL OPERATOR
- ⑫ 8" FLANGED DISMANTLING JOINT, RESTRAINED (1)
- ⑬ 6" x 8" METER "NEPTUNE" OR "OCTAVE" RADIO READ. WITH ANTENNA SHALL BE REQUIRED BY M.S.U.D. (CUSTOMER SHALL PICK UP FROM M.S.U.D.).
- ⑭ 6" BRONZE PLATE STRAINER OR "OCTAVE" WITH STAINLESS STEEL SCREEN. - MAY OR MAY NOT BE REQUIRED DEPENDING ON METER TYPE.
- ⑮ 8" x 6" FLANGED CONCENTRIC REDUCER (2)
- ⑯ STANCON MODEL S-92 SADDLE SUPPORT (2) OR APPROVED EQUAL.
- ⑰ STANCON MODEL S-96 CRADLE SUPPORT (4) OR APPROVED EQUAL.
- ⑱ 8" METER BOX W/BASE, PRE-CAST CONCRETE, WITH STEPS, 12" O.C. PER O.S.H.A. 1910.27. AS APPROVED BY M.S.U.D. BOX SHALL BE ONE PIECE OR TWO PIECE.
- ⑲ "HALLIDAY PRODUCTS" MODEL H2W ACCESS DOOR 6'-0" X 4'-0" WITH HOLD OPEN ARM, AND SAFETY GRATE, AND PRECUT HOLE W/PLASTIC CAP. H-20 RATED OR EQUAL APPROVED BY M.S.U.D.

MADISON SUBURBAN UTILITY DISTRICT

8" METER INSTALLATION

JVE / BWSC

Turner Professional Building
5100 Linbar Drive, Suite 106
Nashville, Tennessee 37211

SCALE: N.T.S.

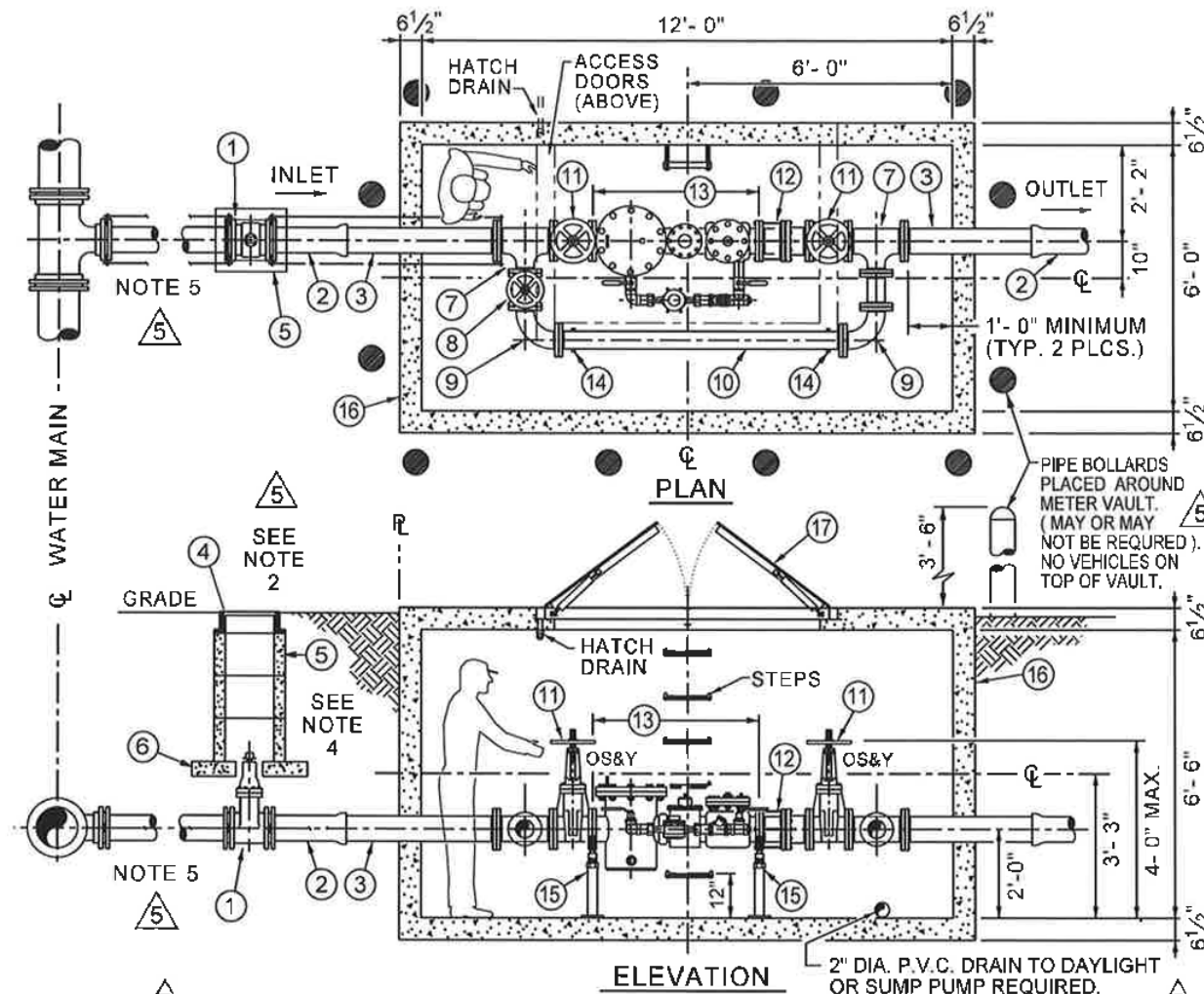
SHEET NO.

DATE: 12/20/02

7

REVISED: 5/14/19 PER M.S.U.D. 5

M_SHEET_07



NOTES:

1. ALL WORK TO BE INSPECTED BY M.S.U.D. AFTER WORK IS COMPLETE AND BEFORE BACKFILLING.
2. ALL WATER METERS SHALL BE PLACED OUTSIDE OF ANY PAVED AREA SUCH AS DRIVEWAYS, ROADS, ETC.
3. CONTRACTOR SHALL PROVIDE ANY AND ALL PERMITS TO M.S.U.D. BEFORE THE START OF WORK.
4. THERE SHALL BE A MINIMUM DISTANCE OF 3'-0" BETWEEN THE OUTER EDGE OF THE METER BOX AND ANY OTHER UTILITIES, OR ABOVE-GROUND OR BELOW-GROUND STRUCTURES.
5. JOINT RESTRAINT:
ALL FITTINGS WILL BE RODDED AND MEGA-LUGGED FROM

THE MAIN TO THE FIRST GATE VALVE IN METER VAULT. THE RODS SHALL BE 3/4" DIAMETER FULLY THREADED STAINLESS STEEL RODS WITH STAINLESS STEEL NUTS. ALL BOLTS TO BE STAINLESS STEEL.

6. FITTINGS:
ALL FITTINGS INSIDE VAULT WILL BE FLANGED FITTINGS. ALL FITTINGS OUTSIDE VAULT WILL BE MECHANICAL JOINT FITTINGS.
7. CONTACT M.S.U.D. FOR INFORMATION ON ITEM 13 IN THE MATERIAL SCHEDULE ABOVE. (6 x 8" METER PICK-UP)
8. BACKFLOW MUST BE READY FOR INSPECTION BEFORE ANY METER WILL BE PROVIDED.

MATERIAL SCHEDULE

1. 6" GATE VALVE M.J. (1) OPEN LEFT, RESILIENT WEDGE, 2" SQUARE OPER. NUT.
2. 6" CLASS 52 DUCTILE IRON PIPE (2)
3. 6" - F.E.P.E. DUCTILE IRON PIPE (2)
4. C.I. VALVE BOX FRAME AND COVER (2) JOHN BOUCHARD #8006 NASHVILLE STANDARD OR APPROVED EQUAL
5. VALVE BOX, PRE-CAST CONCRETE (1)
6. 12" x 12" x 4" CONCRETE VALVE BOX FOOTING (8)
7. 6" x 6" x 4" FLANGED REDUCING TEE (2)
8. 4" GATE VALVE, FLANGED, OS&Y (1) OPEN LEFT, RESILIENT WEDGE HANDWHEEL OPERATOR
9. 4" - 90° FLANGED BEND (2)
10. 4" CLASS 52 DUCTILE IRON PIPE
11. 6" GATE VALVE, FLANGED, OS&Y (2) OPEN LEFT, RESILIENT WEDGE HANDWHEEL OPERATOR
12. 6" FLANGED DISMANTLING JOINT, RESTRAINED (1)
13. 6" x 1 1/2" "NEPTUNE" OR "OCTAVE" S.S. FIRE SERVICE METER WITH BASKET STRAINER, INTERGRAL CHECK VALVE AND METERED BY PASS MODEL: PROTECTUS III S (HIGH PERFORMANCE) (SHALL BE FIRE SYSTEM RATED). (CUSTOMER SHALL PICK UP FROM M.S.U.D.)
14. STANDON MODEL S-92 SADDLE SUPPORT (2) OR APPROVED EQUAL.
15. STANDON MODEL S-96 CRADLE SUPPORT (2) OR APPROVED EQUAL.
16. 6" METER BOX W/BASE, PRE-CAST CONCRETE, WITH STEPS, 12" O.C. PER O.S.H.A. 1910.27. AS APPROVED BY M.S.U.D. BOX SHALL BE ONE PIECE OR TWO PIECE.
17. "HALLIDAY PRODUCTS" MODEL H2W ACCESS DOOR 6'-0" X 4'-0" WITH HOLD OPEN ARM, AND SAFETY GRATE. H-20 RATED OR EQUAL AS APPROVED BY M.S.U.D.

MADISON SUBURBAN UTILITY DISTRICT

6" FIRE LINE METER INSTALLATION

JVE / BWSC

Turner Professional Building
5100 Linbar Drive, Suite 106
Nashville, Tennessee 37211

SCALE: N.T.S.

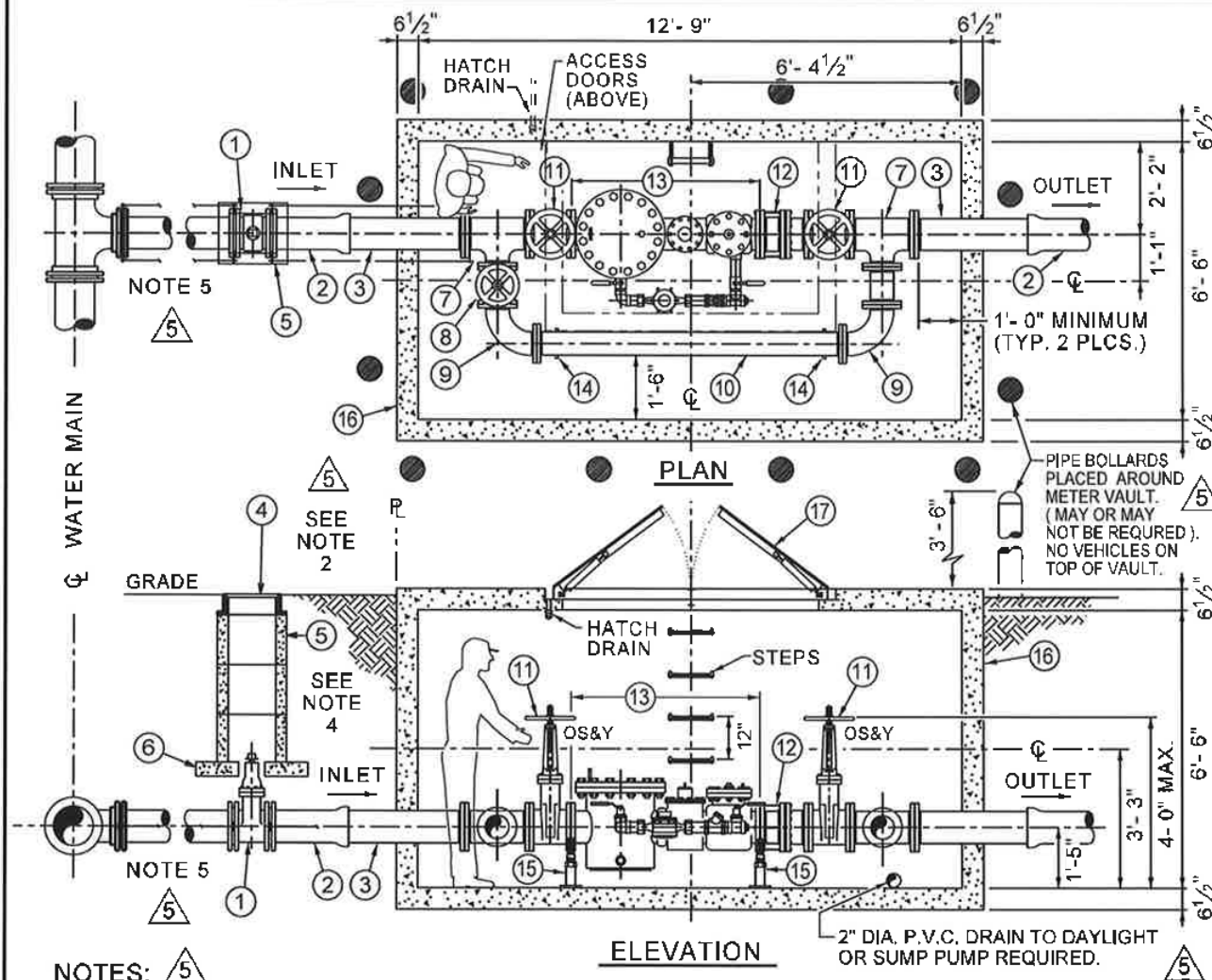
SHEET NO.

DATE: 12/20/02

8

REVISED: 5/14/19 PER M.S.U.D.

MF_SHEET_08



NOTES:

1. ALL WORK TO BE INSPECTED BY M.S.U.D. AFTER WORK IS COMPLETE AND BEFORE BACKFILLING.
2. ALL WATER METERS SHALL BE PLACED OUTSIDE OF ANY PAVED AREA SUCH AS DRIVEWAYS, ROADS, ETC.
3. CONTRACTOR SHALL PROVIDE ANY AND ALL PERMITS TO M.S.U.D. BEFORE THE START OF WORK.
4. THERE SHALL BE A MINIMUM DISTANCE OF 3'-0" BETWEEN THE OUTER EDGE OF THE METER BOX AND ANY OTHER UTILITIES, OR ABOVE-GROUND OR BELOW-GROUND STRUCTURES.
5. JOINT RESTRAINT:
ALL FITTINGS WILL BE RODDED AND MEGA-LUGGED FROM

THE MAIN TO THE FIRST GATE VALVE IN METER VAULT. THE RODS SHALL BE 3/4" DIAMETER FULLY THREADED STAINLESS STEEL RODS WITH STAINLESS STEEL NUTS. ALL BOLTS TO BE STAINLESS STEEL.

6. FITTINGS:
ALL FITTINGS INSIDE VAULT WILL BE FLANGED FITTINGS. ALL FITTINGS OUTSIDE VAULT WILL BE MECHANICAL JOINT FITTINGS.
7. CONTACT M.S.U.D. FOR INFORMATION ON ITEM 13 IN THE MATERIAL SCHEDULE ABOVE. (8" METER PICK-UP)
8. BACKFLOW MUST BE READY FOR INSPECTION BEFORE ANY METER WILL BE PROVIDED.

MATERIAL SCHEDULE

- ① 8" GATE VALVE M.J. (1) OPEN LEFT, RESILIENT WEDGE, 2" SQUARE OPER. NUT.
- ② 8" CLASS 52 DUCTILE IRON PIPE (2)
- ③ 8" - F.E.P.E. DUCTILE IRON PIPE (2)
- ④ C.I. VALVE BOX FRAME AND COVER (2) JOHN BOUCHARD #8006 NASHVILLE STANDARD OR APPROVED EQUAL
- ⑤ VALVE BOX, PRE-CAST CONCRETE (1)
- ⑥ 12" x 12" x 4" CONCRETE VALVE BOX FOOTING (8)
- ⑦ 8" x 8" x 6" FLANGED REDUCING TEE (2)
- ⑧ 6" GATE VALVE, FLANGED, OS&Y (1) OPEN LEFT, RESILIENT WEDGE HANDWHEEL OPERATOR
- ⑨ 6" - 90° FLANGED BEND (2)
- ⑩ 6" CLASS 52 DUCTILE IRON PIPE
- ⑪ 8" GATE VALVE, FLANGED, OS&Y (2) OPEN LEFT, RESILIENT WEDGE HANDWHEEL OPERATOR
- ⑫ 8" FLANGED DISMANTLING JOINT, RESTRAINED (1)
- ⑬ 8" x 2" "NEPTUNE" OR "OCTAVE" S.S. FIRE SERVICE METER WITH BASKET STRAINER, INTEGRAL CHECK VALVE AND METERED BY PASS MODEL: PROTECTUS III S (HIGH PERFORMANCE) (SHALL BE FIRE SYSTEM RATED). (CUSTOMER SHALL PICK UP FROM M.S.U.D.)
- ⑭ STANDON MODEL S-92 SADDLE SUPPORT (2) OR APPROVED EQUAL.
- ⑮ STANDON MODEL S-96 CRADLE SUPPORT (2) OR APPROVED EQUAL.
- ⑯ 8" METER BOX W/BASE, PRE-CAST CONCRETE, WITH STEPS, 12" O.C. PER O.S.H.A. 1910.27. AS APPROVED BY M.S.U.D. BOX SHALL BE ONE PIECE OR TWO PIECE.
- ⑰ "HALLIDAY PRODUCTS" MODEL H2W ACCESS DOOR 6'-0" X 4'-0" WITH HOLD OPEN ARM, AND SAFETY GRATE. H-20 RATED OR EQUAL AS APPROVED BY M.S.U.D.

MADISON SUBURBAN UTILITY DISTRICT

8" FIRE LINE METER INSTALLATION

JVE / BWSC

Turner Professional Building
5100 Linbar Drive, Suite 106
Nashville, Tennessee 37211

SCALE: N.T.S.

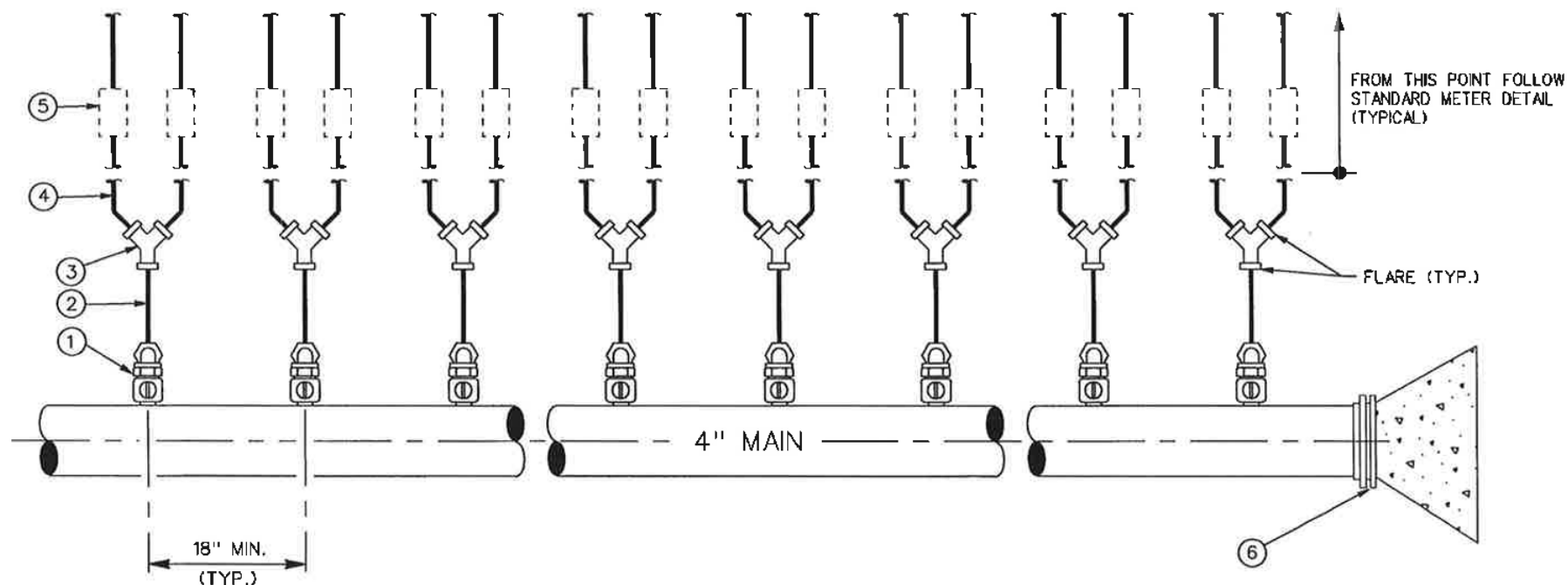
SHEET NO.

DATE: 12/20/02

9

REVISED: 5/14/19 PER M.S.U.D.

MF_SHEET_09



MATERIAL SCHEDULE

- ① MULTI- 1" CORPORATION STOPS.
McDONALD 4701 WITH 4776S 90° BEND
MUELLER H-15020
- ② SERVICE MATERIAL
1" 'K' TYPE SOFT COPPER TUBING
- ③ 8 - 1" x 3/4" WYES (FLARE)
- ④ 3/4" 'K' TYPE SOFT COPPER TUBING
- ⑤ MULTI-3/4" METERS
- ⑥ 4" CAP W/KICKER

NOTES:

1. JOINT RESTRAINT:
ALL FITTINGS WILL BE RODDED OR MEGALUG FROM MAIN TO METER. RODS WILL BE 3/4" DIAMETER FULLY THREADED STAINLESS STEEL RODS.
2. FITTINGS:
ALL FITTINGS INSIDE VAULT WILL BE FLANGED FITTINGS. ALL FITTINGS OUTSIDE VAULT WILL BE MECHANICAL JOINT FITTINGS.
3. ALL WORK TO BE INSPECTED BY M.S.U.D. AFTER WORK IS COMPLETE AND BEFORE BACKFILLING.
4. CONTRACTOR IS REQUIRED TO INSTALL A PRESSURE REDUCING VALVE (PRV) ON THE WATER USER'S SIDE OF THE METER OUTSIDE THE METER BOX FOR INSTALLATIONS WHICH HAVE A STATIC PRESSURE (NO WATER FLOW) OF 100 POUNDS PER SQUARE INCH (PSI) OR GREATER. THE WATER USER SHALL BE RESPONSIBLE FOR MAINTAINING THE PRV IN A GOOD WORKING CONDITION. M.S.U.D. IS NOT RESPONSIBLE FOR REPLACING ANY PORTION OF THE PRV.
5. ALL WATER METERS SHALL BE PLACED OUTSIDE OF ANY PAVED AREA SUCH AS DRIVEWAYS, ROADS, ETC.

MADISON SUBURBAN
UTILITY DISTRICT

MANIFOLD SYSTEM FOR
3/4" WATER SERVICE

JME / BWSC

Turner Professional Building
5100 Linbar Drive, Suite 105
Nashville, Tennessee 37211

SCALE: N.T.S.

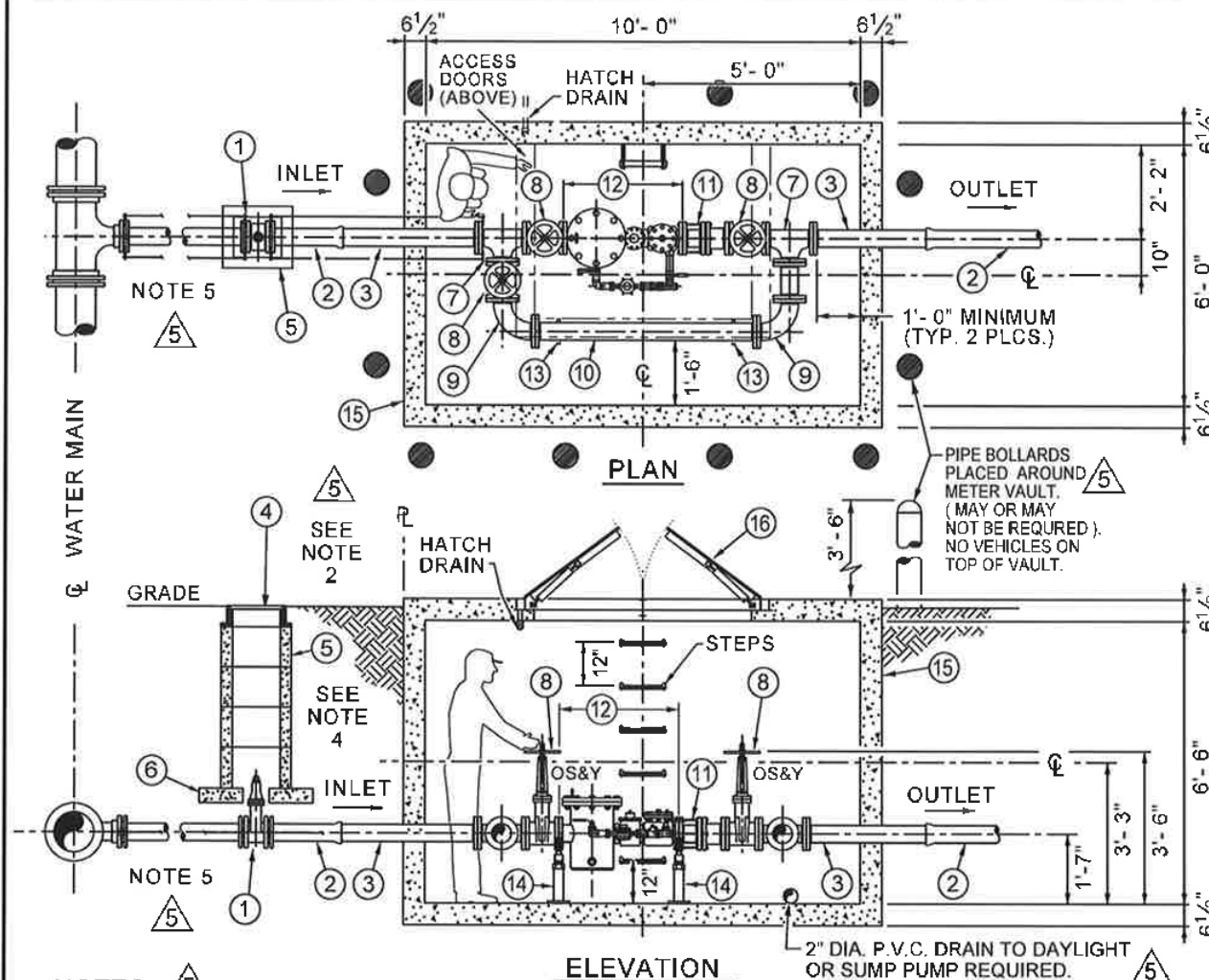
SHEET NO.

DATE: 08/5/02

10

REVISED 02/03/03

MF-SHEET_10



NOTES: 5

1. ALL WORK TO BE INSPECTED BY M.S.U.D. AFTER WORK IS COMPLETE AND BEFORE BACKFILLING.
2. ALL WATER METERS SHALL BE PLACED OUTSIDE OF ANY PAVED AREA SUCH AS DRIVEWAYS, ROADS, ETC.
3. CONTRACTOR SHALL PROVIDE ANY AND ALL PERMITS TO M.S.U.D. BEFORE THE START OF WORK.
4. THERE SHALL BE A MINIMUM DISTANCE OF 3'-0" BETWEEN THE OUTER EDGE OF THE METER BOX AND ANY OTHER UTILITIES, OR ABOVE-GROUND OR BELOW-GROUND STRUCTURES.
5. JOINT RESTRAINT:
ALL FITTINGS WILL BE RODDED AND MEGA-LUGGED FROM

THE MAIN TO THE FIRST GATE VALVE IN METER VAULT. THE RODS SHALL BE 3/4" DIAMETER FULLY THREADED STAINLESS STEEL RODS WITH STAINLESS STEEL NUTS. ALL BOLTS TO BE STAINLESS STEEL.

6. FITTINGS:
ALL FITTINGS INSIDE VAULT WILL BE FLANGED FITTINGS. ALL FITTINGS OUTSIDE VAULT WILL BE MECHANICAL JOINT FITTINGS.
7. CONTACT M.S.U.D. FOR INFORMATION ON ITEM 13 IN THE MATERIAL SCHEDULE ABOVE. (4" METER PICK-UP)
8. BACKFLOW MUST BE READY FOR INSPECTION BEFORE ANY METER WILL BE PROVIDED.

MATERIAL SCHEDULE

- ① 4" GATE VALVE M.J. (1) OPEN LEFT, RESILIENT WEDGE, 2" SQUARE OPER. NUT.
- ② 4" CLASS 52 DUCTILE IRON PIPE (2)
- ③ 4" - F.E.P.E. DUCTILE IRON PIPE (2)
- ④ C.I. VALVE BOX FRAME AND COVER (2) JOHN BOUCHARD #8006 NASHVILLE STANDARD OR APPROVED EQUAL
- ⑤ VALVE BOX, PRE-CAST CONCRETE (1)
- ⑥ 12" x 12" x 4" CONCRETE VALVE BOX FOOTING (8)
- ⑦ 4" FLANGED TEE (2)
- ⑧ 4" GATE VALVE, FLANGED, OS&Y (3) OPEN LEFT, RESILIENT WEDGE HANDWHEEL OPERATOR
- ⑨ 4" - 90° FLANGED BEND (2)
- ⑩ 4" CLASS 52 DUCTILE IRON PIPE
- ⑪ 4" FLANGED DISMANTLING JOINT, RESTRAINED (1)
- ⑫ 4" x 1" "NEPTUNE" OR "OCTAVE" S.S. FIRE SERVICE METER WITH BASKET STRAINER, INTEGRAL CHECK VALVE AND METERED BY PASS. MODEL: PROTECTUS III S (HIGH PERFORMANCE). (SHALL BE FIRE SYSTEM RATED). (CUSTOMER SHALL PICK UP FROM M.S.U.D.)
- ⑬ STANDON MODEL S-92 SADDLE SUPPORT (2) OR APPROVED EQUAL.
- ⑭ STANDON MODEL S-96 CRADLE SUPPORT (2) OR APPROVED EQUAL.
- ⑮ 4" METER BOX W/BASE, PRE-CAST CONCRETE, WITH STEPS, 12" O.C. PER O.S.H.A. 1910.27. AS APPROVED BY M.S.U.D. BOX SHALL BE ONE PIECE OR TWO PIECE.
- ⑯ "HALLIDAY PRODUCTS" MODEL H2W ACCESS DOOR 5'-0" X 4'-0" WITH HOLD OPEN ARM, AND SAFETY GRATE. H-20 RATED OR EQUAL APPROVED BY M.S.U.D.

MADISON SUBURBAN UTILITY DISTRICT

4" FIRE LINE METER INSTALLATION

JVE / BWSC

Turner Professional Building
5100 Linbar Drive, Suite 106
Nashville, Tennessee 37211

SCALE: N.T.S.

SHEET NO.

DATE: 07/29/15

13

REVISED: 5/14/19 PER M.S.U.D. 5

MF_SHEET_13