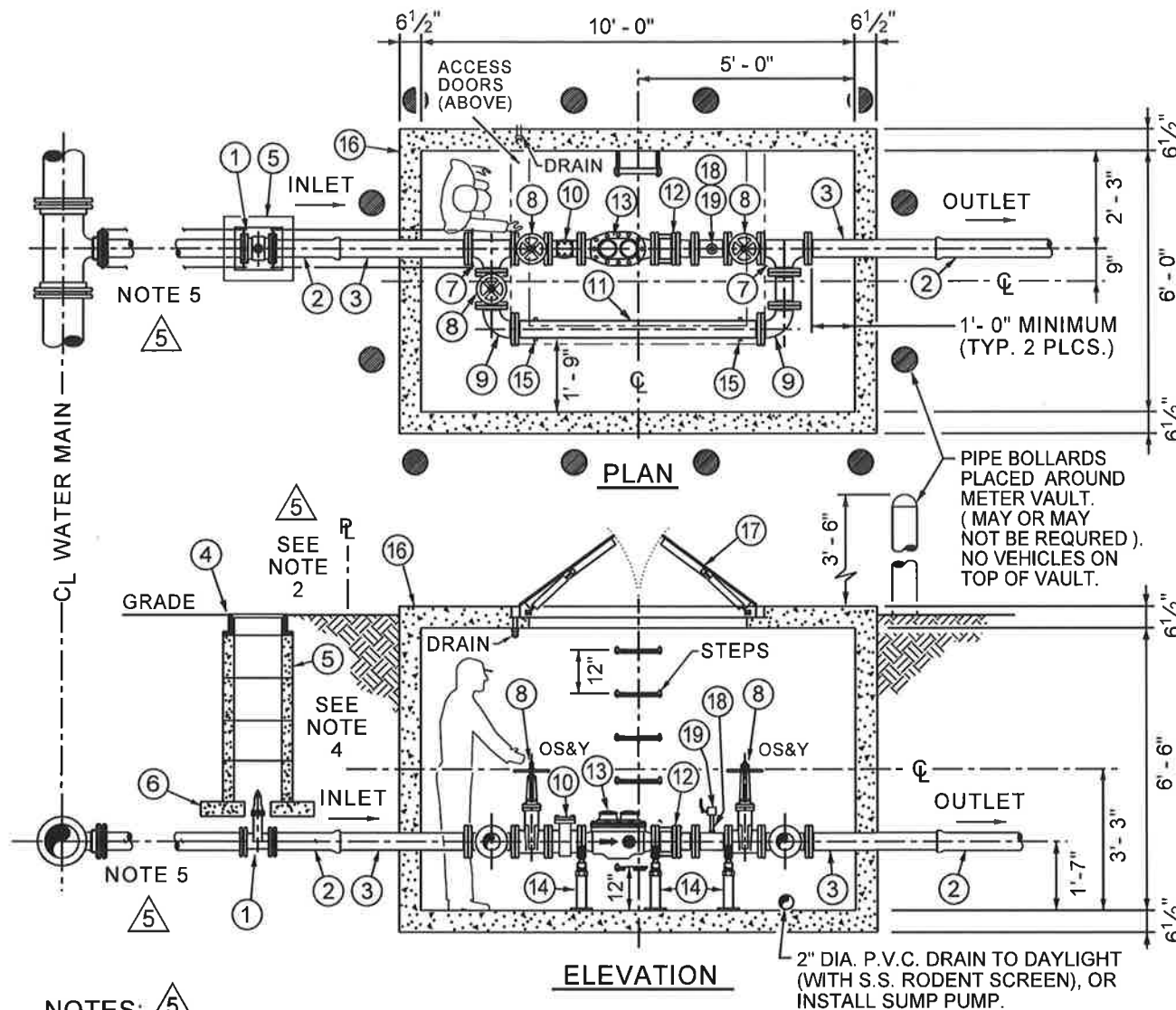


6

M SHEET 03



NOTES: 5

1. ALL WORK TO BE INSPECTED BY M.S.U.D. AFTER WORK IS COMPLETE AND BEFORE BACKFILLING.
2. ALL WATER METERS SHALL BE PLACED OUTSIDE OF ANY PAVED AREA SUCH AS DRIVEWAYS, ROADS, ETC.
3. CONTRACTOR SHALL PROVIDE ANY AND ALL PERMITS TO M.S.U.D. BEFORE THE START OF WORK.
4. THERE SHALL BE A MINIMUM DISTANCE OF 3'-0" BETWEEN THE OUTER EDGE OF THE METER BOX AND ANY OTHER UTILITIES, OR ABOVE-GROUND OR BELOW-GROUND STRUCTURES.
5. JOINT RESTRAINT:
ALL FITTINGS WILL BE RODDED AND MEGA-LUGGED FROM

THE MAIN TO THE FIRST GATE VALVE IN METER VAULT. THE RODS SHALL BE 3/4" DIAMETER FULLY THREADED STAINLESS STEEL RODS WITH WITH STAINLESS STEEL ALL BOLTS TO BE STAINLESS STEEL.

7. FITTINGS:
ALL FITTINGS INSIDE VAULT WILL BE FLANGED FITTINGS. ALL FITTINGS OUTSIDE VAULT WILL BE MECHANICAL JOINT FITTINGS.
8. CONTACT M.S.U.D. FOR INFORMATION ON ITEM 13 IN THE MATERIAL SCHEDULE ABOVE. (6" METER PICK-UP)
9. BACKFLOW MUST BE READY FOR INSPECTION BEFORE ANY METER WILL BE PROVIDED.

MATERIAL SCHEDULE

- 1 4" GATE VALVE M.J. (1) OPEN LEFT, RESILIENT WEDGE, 2" SQUARE OPER. NUT.
- 2 4" CLASS 52 DUCTILE IRON PIPE
- 3 4" - F.E.P.E. DUCTILE IRON PIPE (2)
- 4 C.I. VALVE BOX FRAME AND COVER (1) JOHN BOUCHARD #8006 NASHVILLE STANDARD OR APPROVED EQUAL
- 5 VALVE BOX, PRE-CAST CONCRETE (1)
- 6 12" x 12" x 4" CONCRETE VALVE BOX FOOTING (4)
- 7 4" FLANGED TEE (2)
- 8 4" GATE VALVE, FLANGED, OS&Y (3) OPEN LEFT, RESILIENT WEDGE HANDWHEEL OPERATOR
- 9 4" - 90° FLANGED BEND (2)
- 10 4" BADGER BRONZE PLATE STRAINER WITH STAINLESS STEEL SCREEN OR APPROVED EQUAL
- 11 4" CLASS 52 DUCTILE IRON PIPE
- 12 4" FLANGED DISMANTLING JOINT, RESTRAINED (1)
- 13 4" METER NEPTUNE RADIO READ WITH ANTENNA. INDICATING IN CUBIC FEET - DUAL REGISTERS. "NEPTUNE - TRU/FLO COMPOUND METER" (CUSTOMER SHALL PICK UP FROM M.S.U.D.)
- 14 STANDON MODEL S-96 CRADLE SUPPORT (3) OR APPROVED EQUAL.
- 15 STANDON MODEL S-92 SADDLE SUPPORT (2) OR APPROVED EQUAL.
- 16 4" METER BOX W/BASE, PRE-CAST CONCRETE, WITH STEPS, 12" O.C. PER O.S.H.A. 1910.27. AS APPROVED BY M.S.U.D. BOX. SHALL BE ONE PIECE OR TWO PIECE.
- 17 "HALLIDAY PRODUCTS" MODEL H2W ACCESS DOOR 5'-0" X 4'-0" WITH HOLD OPEN ARM, SAFETY GRATE, AND PRECUT HOLE W/ PLASTIC CAP. H-20 RATED OR EQUAL APPROVED BY M.S.U.D.
- 18 2" X 8" BRASS NIPPLE
- 19 2" STAINLESS STEEL BALL VALVE

MADISON SUBURBAN UTILITY DISTRICT

4" METER INSTALLATION

JVE / BWSC

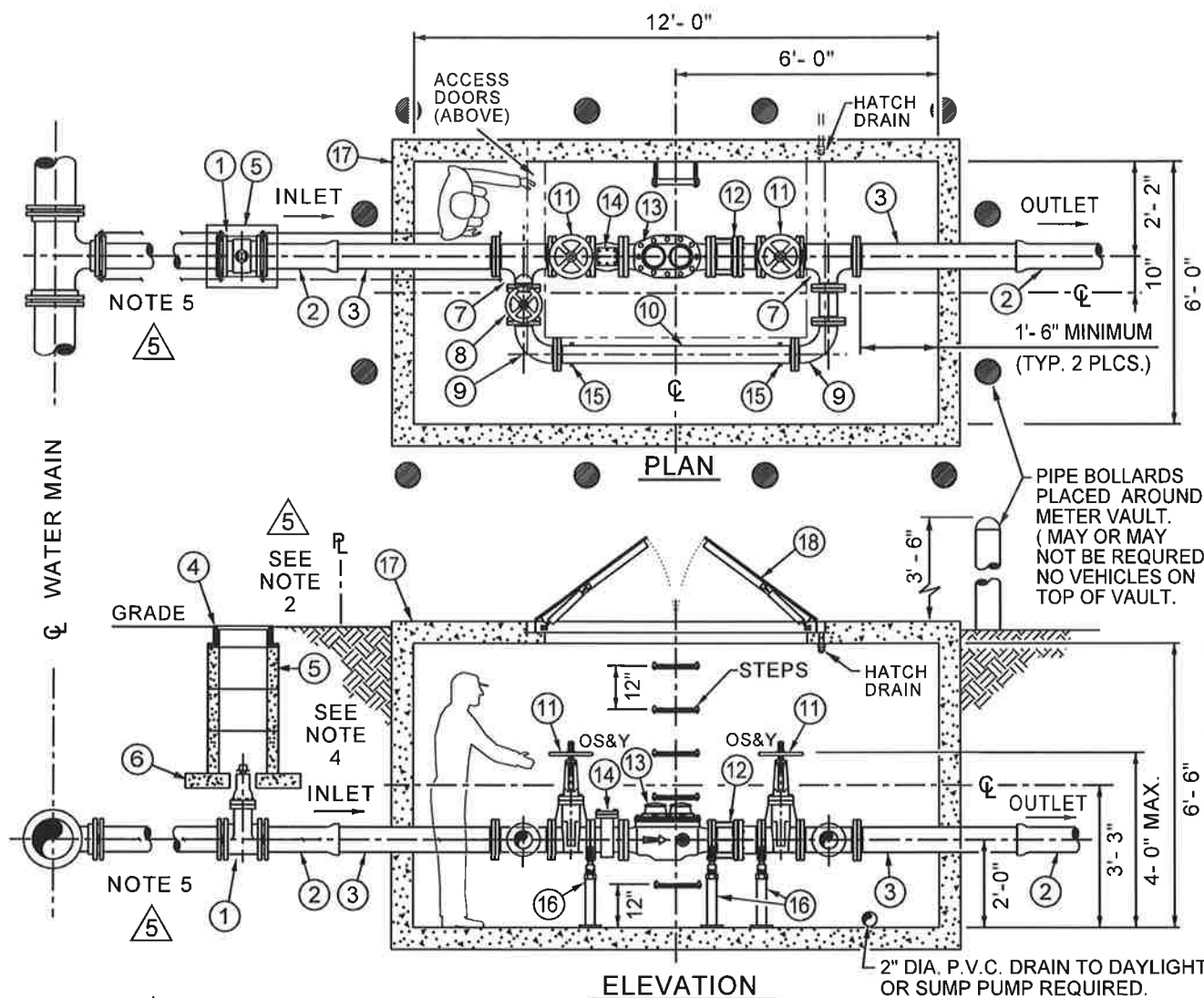
Turner Professional Building
5100 Linbar Drive, Suite 106
Nashville, Tennessee 37211

SCALE: N.T.S.

SHEET NO.

DATE: 12/20/02

5



NOTES: 5

- ALL WORK TO BE INSPECTED BY M.S.U.D. AFTER WORK IS COMPLETE AND BEFORE BACKFILLING.
- ALL WATER METERS SHALL BE PLACED OUTSIDE OF ANY PAVED AREA SUCH AS DRIVEWAYS, ROADS, ETC.
- CONTRACTOR SHALL PROVIDE ANY AND ALL PERMITS TO M.S.U.D. BEFORE THE START OF WORK.
- THERE SHALL BE A MINIMUM DISTANCE OF 3'-0" BETWEEN THE OUTER EDGE OF THE METER BOX AND ANY OTHER UTILITIES, OR ABOVE-GROUND OR BELOW-GROUND STRUCTURES.
- JOINT RESTRAINT:
ALL FITTINGS WILL BE RODDED AND MEGA-LUGGED FROM

THE MAIN TO THE FIRST GATE VALVE IN METER VAULT. THE RODS SHALL BE 3/4" DIAMETER FULLY THREADED STAINLESS STEEL RODS WITH STAINLESS STEEL NUTS. ALL BOLTS TO BE STAINLESS STEEL.

- FITTINGS:
ALL FITTINGS INSIDE VAULT WILL BE FLANGED FITTINGS. ALL FITTINGS OUTSIDE VAULT WILL BE MECHANICAL JOINT FITTINGS.
- CONTACT M.S.U.D. FOR INFORMATION ON ITEM 13 IN THE MATERIAL SCHEDULE ABOVE. (6" METER PICK-UP)
- BACKFLOW MUST BE READY FOR INSPECTION BEFORE ANY METER WILL BE PROVIDED.

MATERIAL SCHEDULE

- 6" GATE VALVE M.J. (1) OPEN LEFT, RESILIENT WEDGE, 2" SQUARE OPER. NUT.
- 6" CLASS 52 DUCTILE IRON PIPE (2)
- 6" - F.E.P.E. CLASS 52 DUCTILE IRON PIPE (2)
- C.I. VALVE BOX FRAME AND COVER (1)
JOHN BOUCHARD #8006 NASHVILLE
STANDARD OR APPROVED EQUAL
- VALVE BOX, PRE-CAST CONCRETE (1)
- 12" x 12" x 4" CONCRETE VALVE BOX
FOOTING (4)
- 6" x 6" x 4" FLANGED REDUCING TEE (2)
- 4" GATE VALVE, FLANGED, OS&Y (1)
OPEN LEFT, RESILIENT WEDGE
HANDWHEEL OPERATOR
- 4" - 90° FLANGED BEND (2)
- 4" CLASS 52 DUCTILE IRON PIPE
- 6" GATE VALVE, FLANGED, OS&Y (2)
OPEN LEFT, RESILIENT WEDGE
HANDWHEEL OPERATOR
- 6" FLANGED DISMANTLING JOINT, RESTRAINED (1)
- 6" METER "NEPTUNE" OR "OCTAVE" RADIO READ.
WITH ANTENNA SHALL BE REQUIRED BY M.S.U.D.
(CUSTOMER SHALL PICK UP FROM M.S.U.D.).
CUSTOMER IS RESPONSIBLE FOR METER DELIVERY.
- 6" BRONZE PLATE STRAINER OR "OCTAVE"
WITH STAINLESS STEEL SCREEN. - MAY OR MAY
NOT BE REQUIRED DEPENDING ON METER TYPE.
- STANDON MODEL S-92 SADDLE SUPPORT (2)
OR APPROVED EQUAL.
- STANDON MODEL S-96 CRADLE SUPPORT (3)
OR APPROVED EQUAL.
- 6" METER BOX W/BASE, PRE-CAST CONCRETE,
WITH STEPS, 12" O.C. PER O.S.H.A. 1910.27.
AS APPROVED BY M.S.U.D. BOX SHALL BE
ONE PIECE OR TWO PIECE.
- "HALLIDAY PRODUCTS" MODEL H2W ACCESS
DOOR 6'-0" X 4'-0" WITH HOLD OPEN ARM,
SAFETY GRATE, AND PRECUT HOLE W/PLASTIC CAP.
H-20 RATED OR EQUAL APPROVED BY M.S.U.D.

MADISON SUBURBAN UTILITY DISTRICT

6" METER INSTALLATION

JVE / BWSC

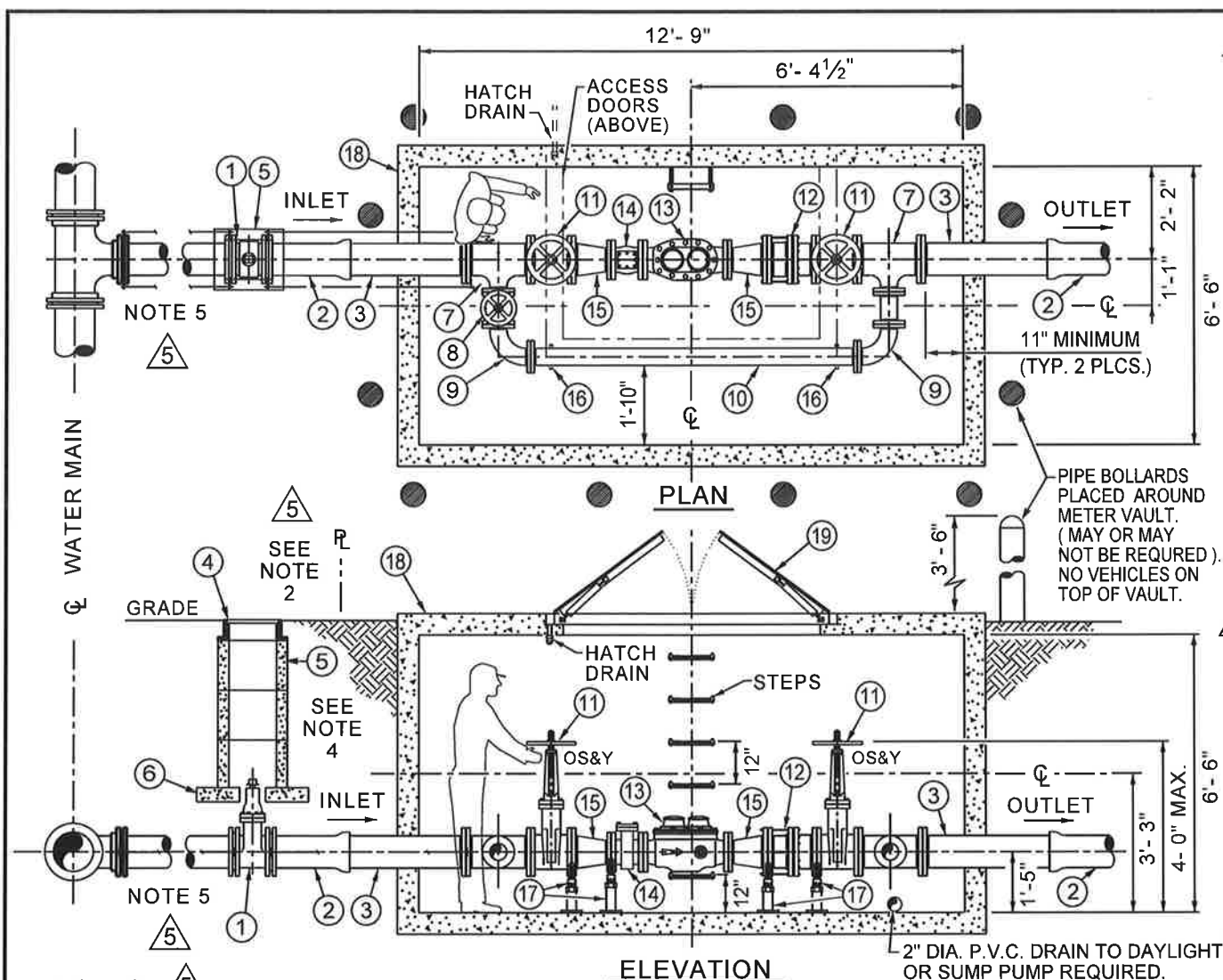
Turner Professional Building
5100 Linbar Drive, Suite 106
Nashville, Tennessee 37211

SCALE: N.T.S.

SHEET NO.

DATE: 12/20/02

6



NOTES: 5

1. ALL WORK TO BE INSPECTED BY M.S.U.D. AFTER WORK IS COMPLETE AND BEFORE BACKFILLING.
2. ALL WATER METERS SHALL BE PLACED OUTSIDE OF ANY PAVED AREA SUCH AS DRIVEWAYS, ROADS, ETC.
3. CONTRACTOR SHALL PROVIDE ANY AND ALL PERMITS TO M.S.U.D. BEFORE THE START OF WORK.
4. THERE SHALL BE A MINIMUM DISTANCE OF 3'-0" BETWEEN THE OUTER EDGE OF THE METER BOX AND ANY OTHER UTILITIES, OR ABOVE-GROUND OR BELOW-GROUND STRUCTURES.
5. JOINT RESTRAINT:
ALL FITTINGS WILL BE RODDED AND MEGA-LUGGED FROM

THE MAIN TO THE FIRST GATE VALVE IN METER VAULT. THE RODS SHALL BE 3/4" DIAMETER FULLY THREADED STAINLESS STEEL RODS WITH STAINLESS STEEL NUTS. ALL BOLTS TO BE STAINLESS STEEL.

6. FITTINGS:
ALL FITTINGS INSIDE VAULT WILL BE FLANGED FITTINGS. ALL FITTINGS OUTSIDE VAULT WILL BE MECHANICAL JOINT FITTINGS.
7. CONTACT M.S.U.D. FOR INFORMATION ON ITEM 13 IN THE MATERIAL SCHEDULE ABOVE. (6 x 8" METER PICK-UP)
8. BACKFLOW MUST BE READY FOR INSPECTION BEFORE ANY METER WILL BE PROVIDED.

MATERIAL SCHEDULE

- 1 8" GATE VALVE M.J. (1) OPEN LEFT, RESILIENT WEDGE, 2" SQUARE OPER. NUT.
- 2 8" CLASS 52 DUCTILE IRON PIPE (2)
- 3 8" - F.E.P.E. CLASS 52 DUCTILE IRON PIPE (2)
- 4 C.I. VALVE BOX FRAME AND COVER (1) JOHN BOUCHARD #8006 NASHVILLE STANDARD OR APPROVED EQUAL
- 5 VALVE BOX, PRE-CAST CONCRETE (1)
- 6 12" x 12" x 4" CONCRETE VALVE BOX FOOTING (4)
- 7 8" x 8" x 6" FLANGED REDUCING TEE (2)
- 8 6" GATE VALVE, FLANGED, OS&Y (1) OPEN LEFT, RESILIENT WEDGE HANDWHEEL OPERATOR
- 9 6" - 90° FLANGED BEND (2)
- 10 6" CLASS 52 DUCTILE IRON PIPE
- 11 8" GATE VALVE, FLANGED, OS&Y (2) OPEN LEFT, RESILIENT WEDGE HANDWHEEL OPERATOR
- 12 8" FLANGED DISMANTLING JOINT, RESTRAINED (1)
- 13 6" x 8" METER "NEPTUNE" OR "OCTAVE" RADIO READ. WITH ANTENNA SHALL BE REQUIRED BY M.S.U.D. (CUSTOMER SHALL PICK UP FROM M.S.U.D.). CUSTOMER IS RESPONSIBLE FOR METER DELIVERY.
- 14 6" BRONZE PLATE STRAINER OR "OCTAVE" WITH STAINLESS STEEL SCREEN. - MAY OR MAY NOT BE REQUIRED DEPENDING ON METER TYPE.
- 15 8" x 6" FLANGED CONCENTRIC REDUCER (2)
- 16 STANCON MODEL S-92 SADDLE SUPPORT (2) OR APPROVED EQUAL.
- 17 STANCON MODEL S-96 CRADLE SUPPORT (4) OR APPROVED EQUAL.
- 18 8" METER BOX W/BASE, PRE-CAST CONCRETE, WITH STEPS, 12" O.C. PER O.S.H.A. 1910.27. AS APPROVED BY M.S.U.D. BOX SHALL BE ONE PIECE OR TWO PIECE.
- 19 "HALLIDAY PRODUCTS" MODEL H2W ACCESS DOOR 6'-0" X 4'-0" WITH HOLD OPEN ARM, AND SAFETY GRATE, AND PRECUT HOLE W/PLASTIC CAP. H-20 RATED OR EQUAL APPROVED BY M.S.U.D.

MADISON SUBURBAN UTILITY DISTRICT

8" METER INSTALLATION

JVE / BWSC

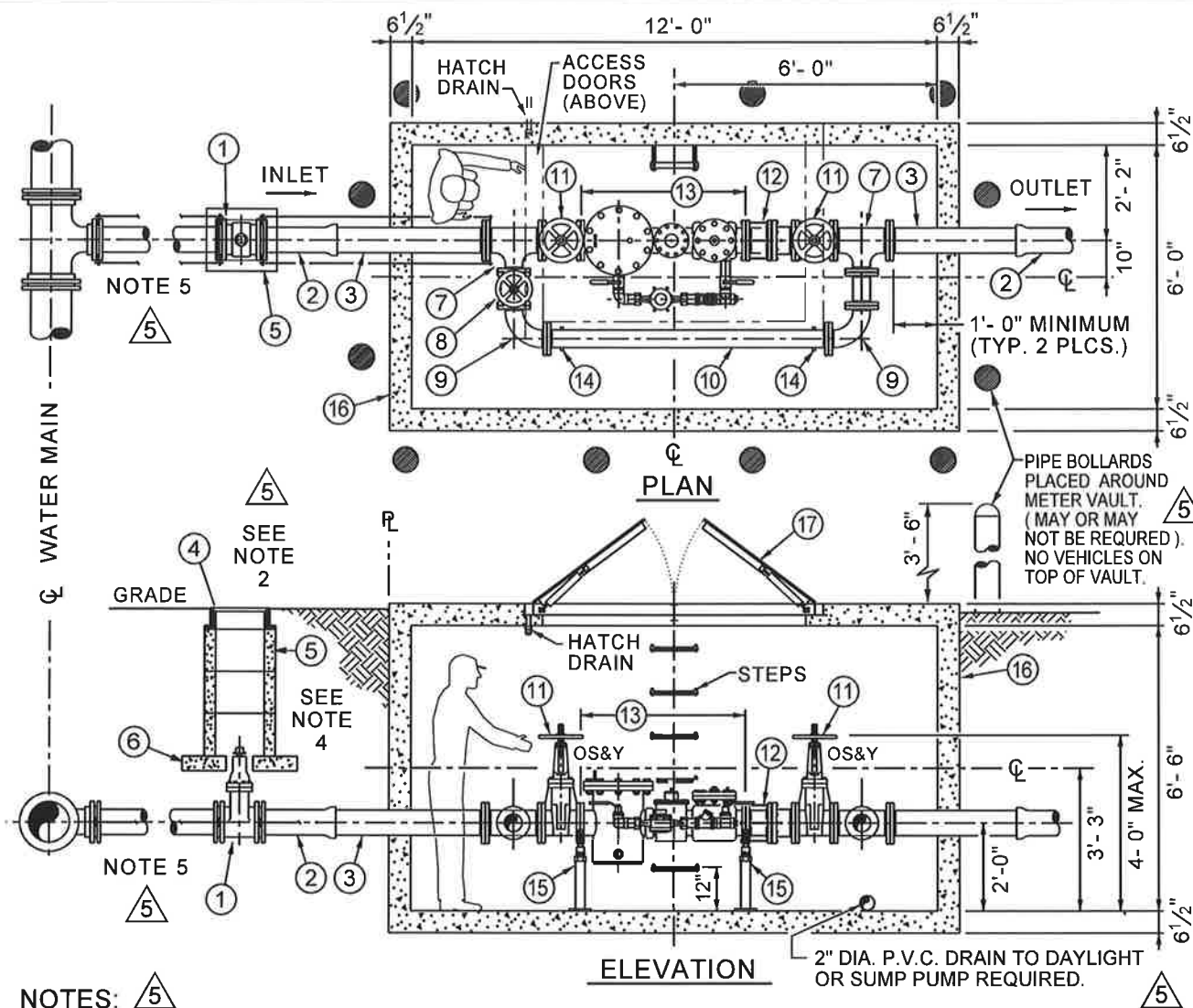
Turner Professional Building
5100 Linbar Drive, Suite 106
Nashville, Tennessee 37211

SCALE: N.T.S.

SHEET NO.

DATE: 12/20/02

7



NOTES: 5

1. ALL WORK TO BE INSPECTED BY M.S.U.D. AFTER WORK IS COMPLETE AND BEFORE BACKFILLING.
2. ALL WATER METERS SHALL BE PLACED OUTSIDE OF ANY PAVED AREA SUCH AS DRIVEWAYS, ROADS, ETC.
3. CONTRACTOR SHALL PROVIDE ANY AND ALL PERMITS TO M.S.U.D. BEFORE THE START OF WORK.
4. THERE SHALL BE A MINIMUM DISTANCE OF 3'-0" BETWEEN THE OUTER EDGE OF THE METER BOX AND ANY OTHER UTILITIES, OR ABOVE-GROUND OR BELOW-GROUND STRUCTURES.
5. JOINT RESTRAINT:
ALL FITTINGS WILL BE RODDED AND MEGA-LUGGED FROM

THE MAIN TO THE FIRST GATE VALVE IN METER VAULT. THE RODS SHALL BE $\frac{3}{4}$ " DIAMETER FULLY THREADED STAINLESS STEEL RODS WITH STAINLESS STEEL NUTS. ALL BOLTS TO BE STAINLESS STEEL.

6. FITTINGS:
ALL FITTINGS INSIDE VAULT WILL BE FLANGED FITTINGS. ALL FITTINGS OUTSIDE VAULT WILL BE MECHANICAL JOINT FITTINGS.
7. CONTACT M.S.U.D. FOR INFORMATION ON ITEM 13 IN THE MATERIAL SCHEDULE ABOVE. (6 x 8" METER PICK-UP)
8. BACKFLOW MUST BE READY FOR INSPECTION BEFORE ANY METER WILL BE PROVIDED.

MATERIAL SCHEDULE

- 1 6" GATE VALVE M.J. (1) OPEN LEFT, RESILIENT WEDGE, 2" SQUARE OPER. NUT.
- 2 6" CLASS 52 DUCTILE IRON PIPE (2)
- 3 6" - F.E.P.E. DUCTILE IRON PIPE (2)
- 4 C.I. VALVE BOX FRAME AND COVER (2) JOHN BOUCHARD #8006 NASHVILLE STANDARD OR APPROVED EQUAL
- 5 VALVE BOX, PRE-CAST CONCRETE (1)
- 6 12" x 12" x 4" CONCRETE VALVE BOX FOOTING (8)
- 7 6" x 6" x 4" FLANGED REDUCING TEE (2)
- 8 4" GATE VALVE, FLANGED, OS&Y (1) OPEN LEFT, RESILIENT WEDGE HANDWHEEL OPERATOR
- 9 4" - 90° FLANGED BEND (2)
- 10 4" CLASS 52 DUCTILE IRON PIPE
- 11 6" GATE VALVE, FLANGED, OS&Y (2) OPEN LEFT, RESILIENT WEDGE HANDWHEEL OPERATOR
- 12 6" FLANGED DISMANTLING JOINT, RESTRAINED (1)
- 13 6" x 1 1/2" "NEPTUNE" OR "OCTAVE" S.S. FIRE SERVICE METER WITH BASKET STRAINER, INTERGAL CHECK VALVE AND METERED BY PASS MODEL: PROTECTUS III S (HIGH PERFORMANCE) (SHALL BE FIRE SYSTEM RATED). (CUSTOMER SHALL PICK UP FROM M.S.U.D.)
- 14 STANDON MODEL S-92 SADDLE SUPPORT (2) OR APPROVED EQUAL.
- 15 STANDON MODEL S-96 CRADLE SUPPORT (2) OR APPROVED EQUAL.
- 16 6" METER BOX W/BASE, PRE-CAST CONCRETE, WITH STEPS, 12" O.C. PER O.S.H.A. 1910.27. AS APPROVED BY M.S.U.D. BOX SHALL BE ONE PIECE OR TWO PIECE.
- 17 "HALLIDAY PRODUCTS" MODEL H2W ACCESS DOOR 6'-0" X 4'-0" WITH HOLD OPEN ARM, AND SAFETY GRATE. H-20 RATED OR EQUAL AS APPROVED BY M.S.U.D.

MADISON SUBURBAN UTILITY DISTRICT

6" FIRE LINE METER INSTALLATION

JVE / BWSC

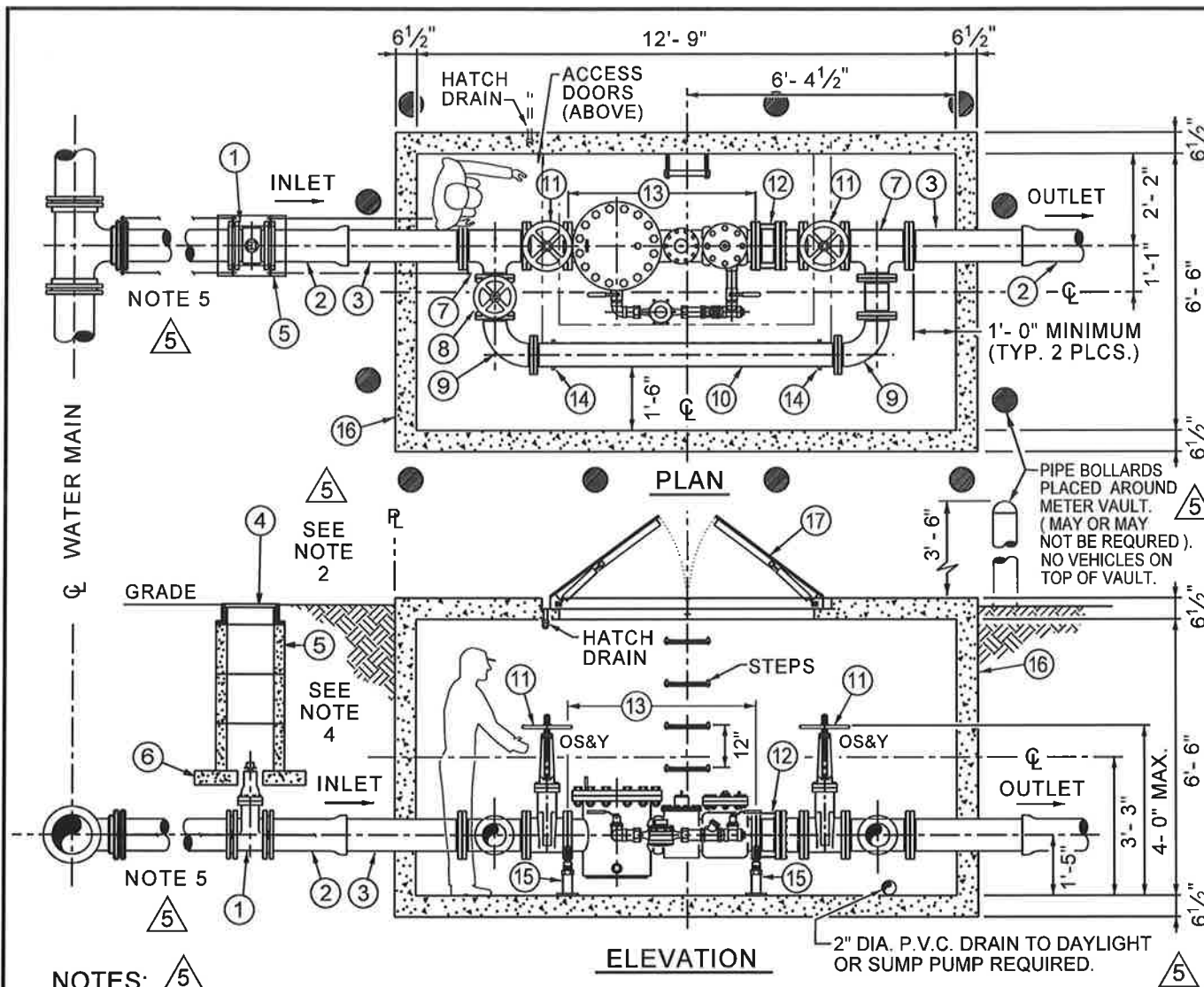
Turner Professional Building
5100 Linbar Drive, Suite 106
Nashville, Tennessee 37211

SCALE: N.T.S.

SHEET NO.

DATE: 12/20/02

8



MATERIAL SCHEDULE

- ① 8" GATE VALVE M.J. (1) OPEN LEFT, RESILIENT WEDGE, 2" SQUARE OPER. NUT.
- ② 8" CLASS 52 DUCTILE IRON PIPE (2)
- ③ 8" - F.E.P.E. DUCTILE IRON PIPE (2)
- ④ C.I. VALVE BOX FRAME AND COVER (2) JOHN BOUCHARD #8006 NASHVILLE STANDARD OR APPROVED EQUAL
- ⑤ VALVE BOX, PRE-CAST CONCRETE (1)
- ⑥ 12" x 12" x 4" CONCRETE VALVE BOX FOOTING (8)
- ⑦ 8" x 8" x 6" FLANGED REDUCING TEE (2)
- ⑧ 6" GATE VALVE, FLANGED, OS&Y (1) OPEN LEFT, RESILIENT WEDGE HANDWHEEL OPERATOR
- ⑨ 6" - 90° FLANGED BEND (2)
- ⑩ 6" CLASS 52 DUCTILE IRON PIPE
- ⑪ 8" GATE VALVE, FLANGED, OS&Y (2) OPEN LEFT, RESILIENT WEDGE HANDWHEEL OPERATOR
- ⑫ 8" FLANGED DISMANTLING JOINT, RESTRAINED (1)
- ⑬ 8" x 2" "NEPTUNE" OR "OCTAVE" S.S. FIRE SERVICE METER WITH BASKET STRAINER, INTEGRAL CHECK VALVE AND METERED BY PASS MODEL: PROTECTUS III S (HIGH PERFORMANCE) (SHALL BE FIRE SYSTEM RATED). (CUSTOMER SHALL PICK UP FROM M.S.U.D.)
- ⑭ STANDON MODEL S-92 SADDLE SUPPORT (2) OR APPROVED EQUAL.
- ⑮ STANDON MODEL S-96 CRADLE SUPPORT (2) OR APPROVED EQUAL.
- ⑯ 8" METER BOX W/BASE, PRE-CAST CONCRETE, WITH STEPS, 12" O.C. PER O.S.H.A. 1910.27. AS APPROVED BY M.S.U.D. BOX SHALL BE ONE PIECE OR TWO PIECE.
- ⑰ "HALLIDAY PRODUCTS" MODEL H2W ACCESS DOOR 6'-0" X 4'-0" WITH HOLD OPEN ARM, AND SAFETY GRATE. H-20 RATED OR EQUAL AS APPROVED BY M.S.U.D.

NOTES: ⑤

1. ALL WORK TO BE INSPECTED BY M.S.U.D. AFTER WORK IS COMPLETE AND BEFORE BACKFILLING.
2. ALL WATER METERS SHALL BE PLACED OUTSIDE OF ANY PAVED AREA SUCH AS DRIVEWAYS, ROADS, ETC.
3. CONTRACTOR SHALL PROVIDE ANY AND ALL PERMITS TO M.S.U.D. BEFORE THE START OF WORK.
4. THERE SHALL BE A MINIMUM DISTANCE OF 3'-0" BETWEEN THE OUTER EDGE OF THE METER BOX AND ANY OTHER UTILITIES, OR ABOVE-GROUND OR BELOW-GROUND STRUCTURES.
5. JOINT RESTRAINT:
ALL FITTINGS WILL BE RODDED AND MEGA-LUGGED FROM

THE MAIN TO THE FIRST GATE VALVE IN METER VAULT. THE RODS SHALL BE 3/4" DIAMETER FULLY THREADED STAINLESS STEEL RODS WITH STAINLESS STEEL NUTS. ALL BOLTS TO BE STAINLESS STEEL.

6. FITTINGS:
ALL FITTINGS INSIDE VAULT WILL BE FLANGED FITTINGS. ALL FITTINGS OUTSIDE VAULT WILL BE MECHANICAL JOINT FITTINGS.
7. CONTACT M.S.U.D. FOR INFORMATION ON ITEM 13 IN THE MATERIAL SCHEDULE ABOVE. (8" METER PICK-UP)
8. BACKFLOW MUST BE READY FOR INSPECTION BEFORE ANY METER WILL BE PROVIDED.

MADISON SUBURBAN UTILITY DISTRICT

8" FIRE LINE METER INSTALLATION

JVE / BWSC

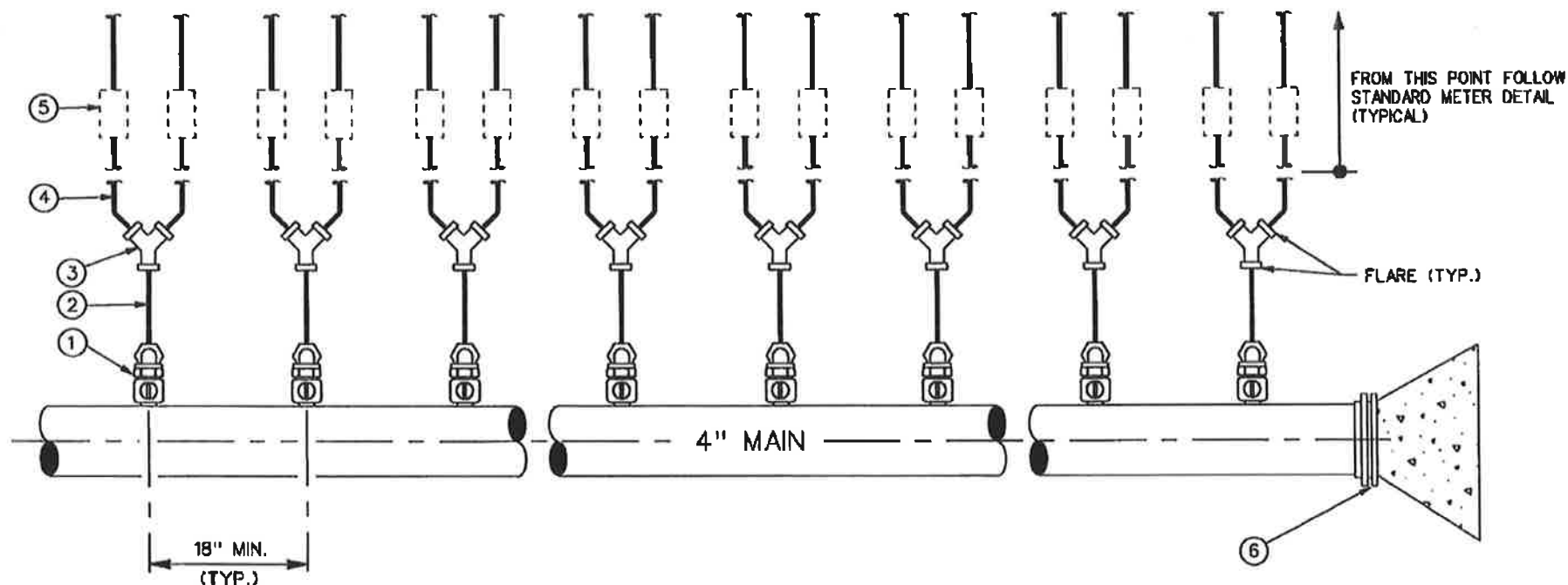
Turner Professional Building
5100 Linbar Drive, Suite 106
Nashville, Tennessee 37211

SCALE: N.T.S.

SHEET NO.

DATE: 12/20/02

9



MATERIAL SCHEDULE

- ① MULTI-1" CORPORATION STOPS. McDONALD 4701 WITH 4776S 90° BEND MUELLER H-15020
- ② SERVICE MATERIAL 1" "K" TYPE SOFT COPPER TUBING
- ③ 8 - 1" x 3/4" WYES (FLARE)
- ④ 3/4" "K" TYPE SOFT COPPER TUBING
- ⑤ MULTI-3/4" METERS
- ⑥ 4" CAP W/KICKER

NOTES:

1. JOINT RESTRAINT:
ALL FITTINGS WILL BE RODDED OR MEGALUG FROM MAIN TO METER. RODS WILL BE 3/4" DIAMETER FULLY THREADED STAINLESS STEEL RODS.
2. FITTINGS:
ALL FITTINGS INSIDE VAULT WILL BE FLANGED FITTINGS. ALL FITTINGS OUTSIDE VAULT WILL BE MECHANICAL JOINT FITTINGS.
3. ALL WORK TO BE INSPECTED BY M.S.U.D. AFTER WORK IS COMPLETE AND BEFORE BACKFILLING.
4. CONTRACTOR IS REQUIRED TO INSTALL A PRESSURE REDUCING VALVE (PRV) ON THE WATER USER'S SIDE OF THE METER OUTSIDE THE METER BOX FOR INSTALLATIONS WHICH HAVE A STATIC PRESSURE (NO WATER FLOW) OF 100 POUNDS PER SQUARE INCH (PSI) OR GREATER. THE WATER USER SHALL BE RESPONSIBLE FOR MAINTAINING THE PRV IN A GOOD WORKING CONDITION. M.S.U.D. IS NOT RESPONSIBLE FOR REPLACING ANY PORTION OF THE PRV.
5. ALL WATER METERS SHALL BE PLACED OUTSIDE OF ANY PAVED AREA SUCH AS DRIVEWAYS, ROADS, ETC.

MADISON SUBURBAN UTILITY DISTRICT

MANIFOLD SYSTEM FOR 3/4" WATER SERVICE

JML/BWSC

Turner Professional Building
5100 Linbar Drive, Suite 108
Nashville, Tennessee 37211

SCALE: N.T.S.

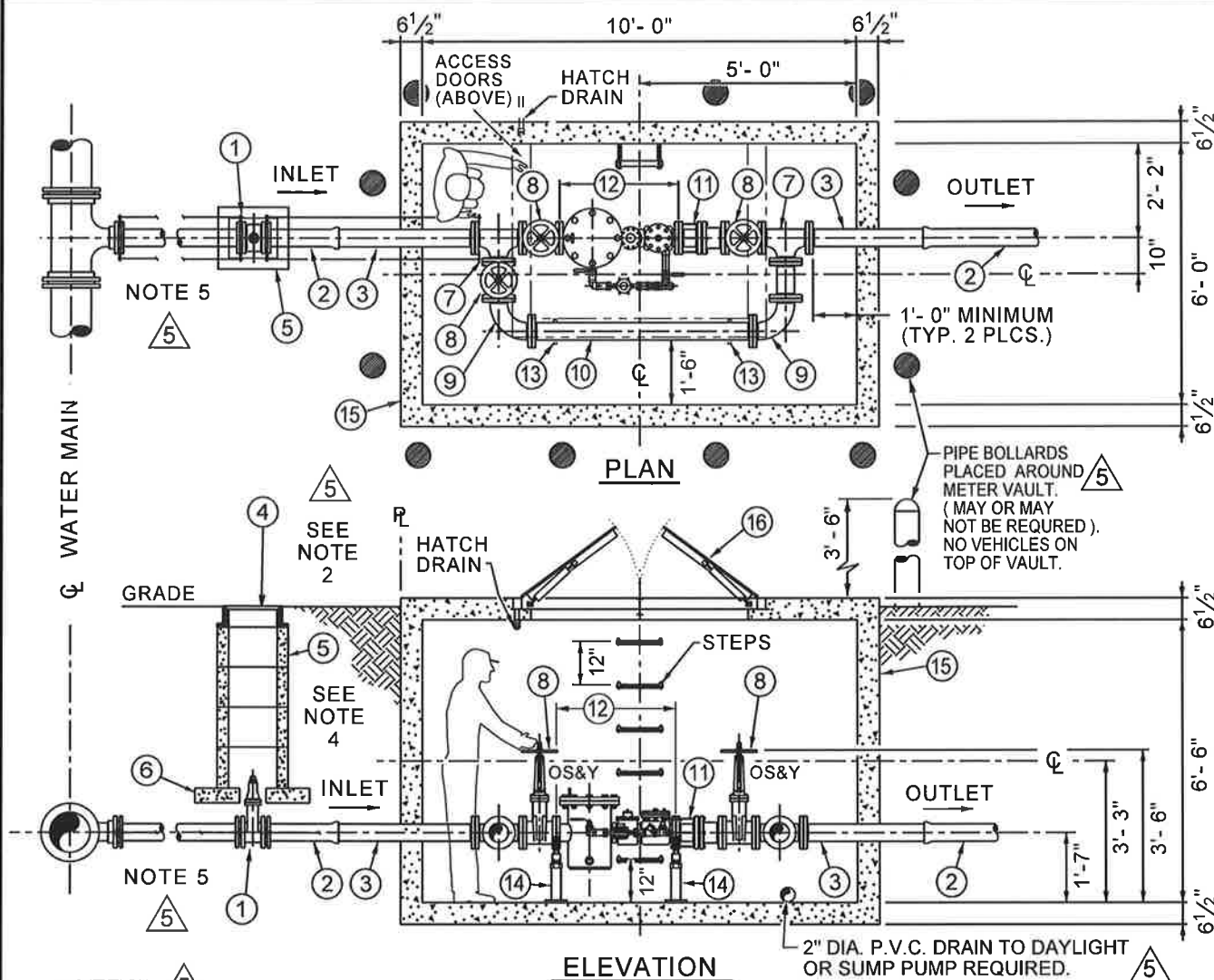
SHEET NO.

DATE: 08/5/02

10

REVISED 02/03/03

MF-SHEET-10



MATERIAL SCHEDULE

- ① 4" GATE VALVE M.J. (1) OPEN LEFT, RESILIENT WEDGE, 2" SQUARE OPER. NUT.
- ② 4" CLASS 52 DUCTILE IRON PIPE (2)
- ③ 4" - F.E.P.E. DUCTILE IRON PIPE (2)
- ④ C.I. VALVE BOX FRAME AND COVER (2) JOHN BOUCHARD #8006 NASHVILLE STANDARD OR APPROVED EQUAL
- ⑤ VALVE BOX, PRE-CAST CONCRETE (1)
- ⑥ 12" x 12" x 4" CONCRETE VALVE BOX FOOTING (8)
- ⑦ 4" FLANGED TEE (2)
- ⑧ 4" GATE VALVE, FLANGED, OS&Y (3) OPEN LEFT, RESILIENT WEDGE HANDWHEEL OPERATOR
- ⑨ 4" - 90° FLANGED BEND (2)
- ⑩ 4" CLASS 52 DUCTILE IRON PIPE
- ⑪ 4" FLANGED DISMANTLING JOINT, RESTRAINED (1)
- ⑫ 4" x 1" "NEPTUNE" OR "OCTAVE" S.S. FIRE SERVICE METER WITH BASKET STRAINER, INTEGRAL CHECK VALVE AND METERED BY PASS. MODEL: PROTECTUS III S (HIGH PERFORMANCE). (SHALL BE FIRE SYSTEM RATED). (CUSTOMER SHALL PICK UP FROM M.S.U.D.)
- ⑬ STANDON MODEL S-92 SADDLE SUPPORT (2) OR APPROVED EQUAL.
- ⑭ STANDON MODEL S-96 CRADLE SUPPORT (2) OR APPROVED EQUAL.
- ⑮ 4" METER BOX W/BASE, PRE-CAST CONCRETE, WITH STEPS, 12" O.C. PER O.S.H.A. 1910.27. AS APPROVED BY M.S.U.D. BOX SHALL BE ONE PIECE OR TWO PIECES.
- ⑯ "HALLIDAY PRODUCTS" MODEL H2W ACCESS DOOR 5'-0" X 4'-0" WITH HOLD OPEN ARM, AND SAFETY GRATE. H-20 RATED OR EQUAL APPROVED BY M.S.U.D.

NOTES: ⑤

1. ALL WORK TO BE INSPECTED BY M.S.U.D. AFTER WORK IS COMPLETE AND BEFORE BACKFILLING.
2. ALL WATER METERS SHALL BE PLACED OUTSIDE OF ANY PAVED AREA SUCH AS DRIVEWAYS, ROADS, ETC.
3. CONTRACTOR SHALL PROVIDE ANY AND ALL PERMITS TO M.S.U.D. BEFORE THE START OF WORK.
4. THERE SHALL BE A MINIMUM DISTANCE OF 3'-0" BETWEEN THE OUTER EDGE OF THE METER BOX AND ANY OTHER UTILITIES, OR ABOVE-GROUND OR BELOW-GROUND STRUCTURES.
5. JOINT RESTRAINT:
ALL FITTINGS WILL BE RODDED AND MEGA-LUGGED FROM

THE MAIN TO THE FIRST GATE VALVE IN METER VAULT. THE RODS SHALL BE 3/4" DIAMETER FULLY THREADED STAINLESS STEEL RODS WITH STAINLESS STEEL NUTS. ALL BOLTS TO BE STAINLESS STEEL.

6. FITTINGS:
ALL FITTINGS INSIDE VAULT WILL BE FLANGED FITTINGS. ALL FITTINGS OUTSIDE VAULT WILL BE MECHANICAL JOINT FITTINGS.
7. CONTACT M.S.U.D. FOR INFORMATION ON ITEM 13 IN THE MATERIAL SCHEDULE ABOVE. (4" METER PICK-UP)
8. BACKFLOW MUST BE READY FOR INSPECTION BEFORE ANY METER WILL BE PROVIDED.

MADISON SUBURBAN UTILITY DISTRICT

4" FIRE LINE METER INSTALLATION

JVE / BWSC

Turner Professional Building
5100 Linbar Drive, Suite 106
Nashville, Tennessee 37211

SCALE: N.T.S.

SHEET NO.

DATE: 07/29/15

13