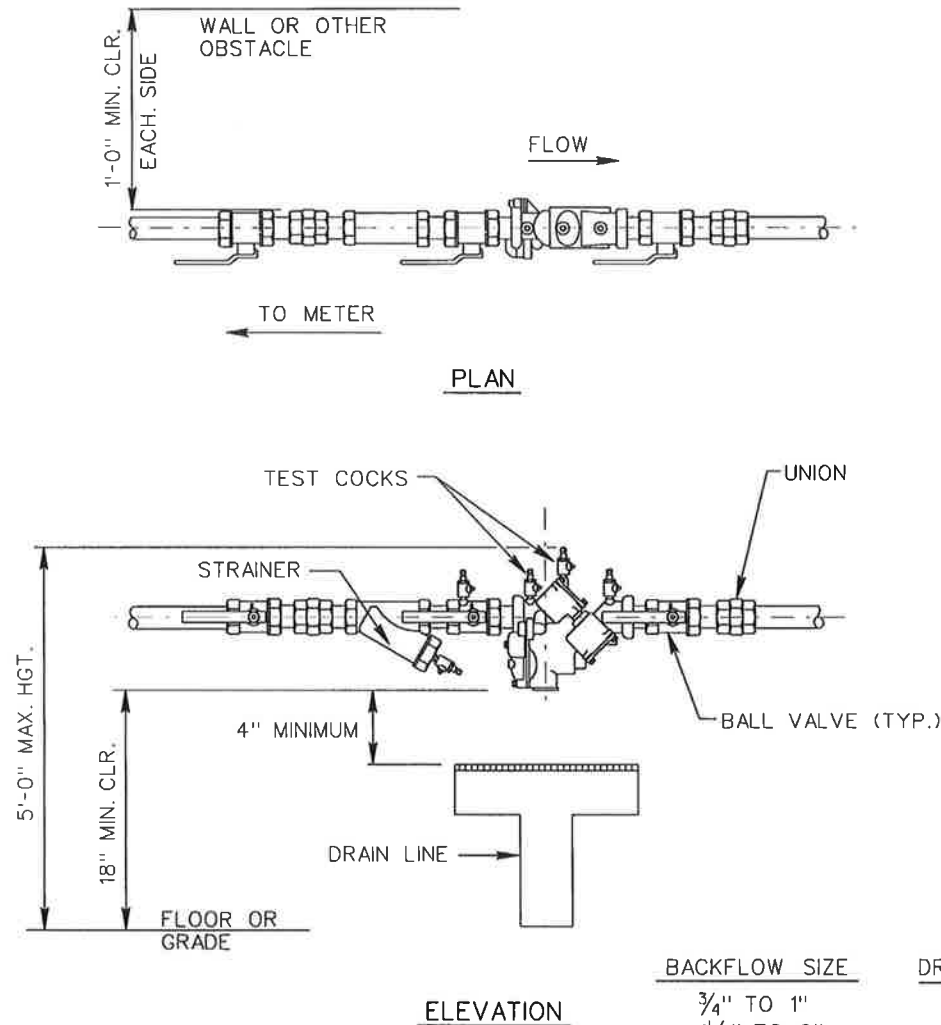


NOTE: MUST ALSO SHOW SPECIFIC LOCATION AND DRAINAGE DETAILS



### NOTES

ASSEMBLY SHALL BE HORIZONTALLY INSTALLED COMPLETE WITH CLEARANCES SHOWN.

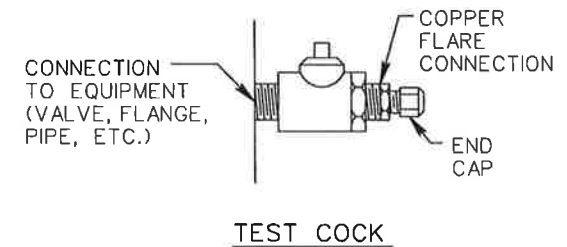
OUTDOOR INSTALLATIONS SHALL BE PROVIDED WITH WEATHERPROOF ENCLOSURE AND FULL FREEZE PROTECTION. HEAT RECOMMENDED.

DRAIN LINE (INSIDE INSTALLATION ONLY) SHALL BE INSTALLED IN ACCORDANCE WITH THE M.S.U.D.'S INSTALLATION REQUIREMENTS.

BALL VALVES SHALL BE RESILIENT SEAT, 1/4 TURN, FULL PORT, BRONZE.

PROVIDE TEST COCKS WITH WATER TIGHT TEST ADAPTORS, COPPER FLARE CONNECTIONS AND END CAPS.

FLOOR DRAINAGE MUST BE SHOWN AND OF ADEQUATE SIZE FOR PROPER DRAINAGE. REFER TO MSUD'S DRAIN LINE REQUIREMENTS FOR DETAILS.



BACKFLOW SIZE	DRAIN SIZE
3/4" TO 1"	3"
1 1/4" TO 2"	6"
2 1/2" TO 3"	6"
4" TO 6"	8"
8" TO 10"	10"

MADISON SUBURBAN UTILITY DISTRICT	
3/4" - 2" REDUCED PRESSURE BACKFLOW PREVENTER ASSEMBLY	
JME / BWSC	
Turner Professional Building 5100 Linbar Drive, Suite 106 Nashville, Tennessee 37211	
SCALE: NONE	SHEET NO. 2
DATE: 04/06/92	

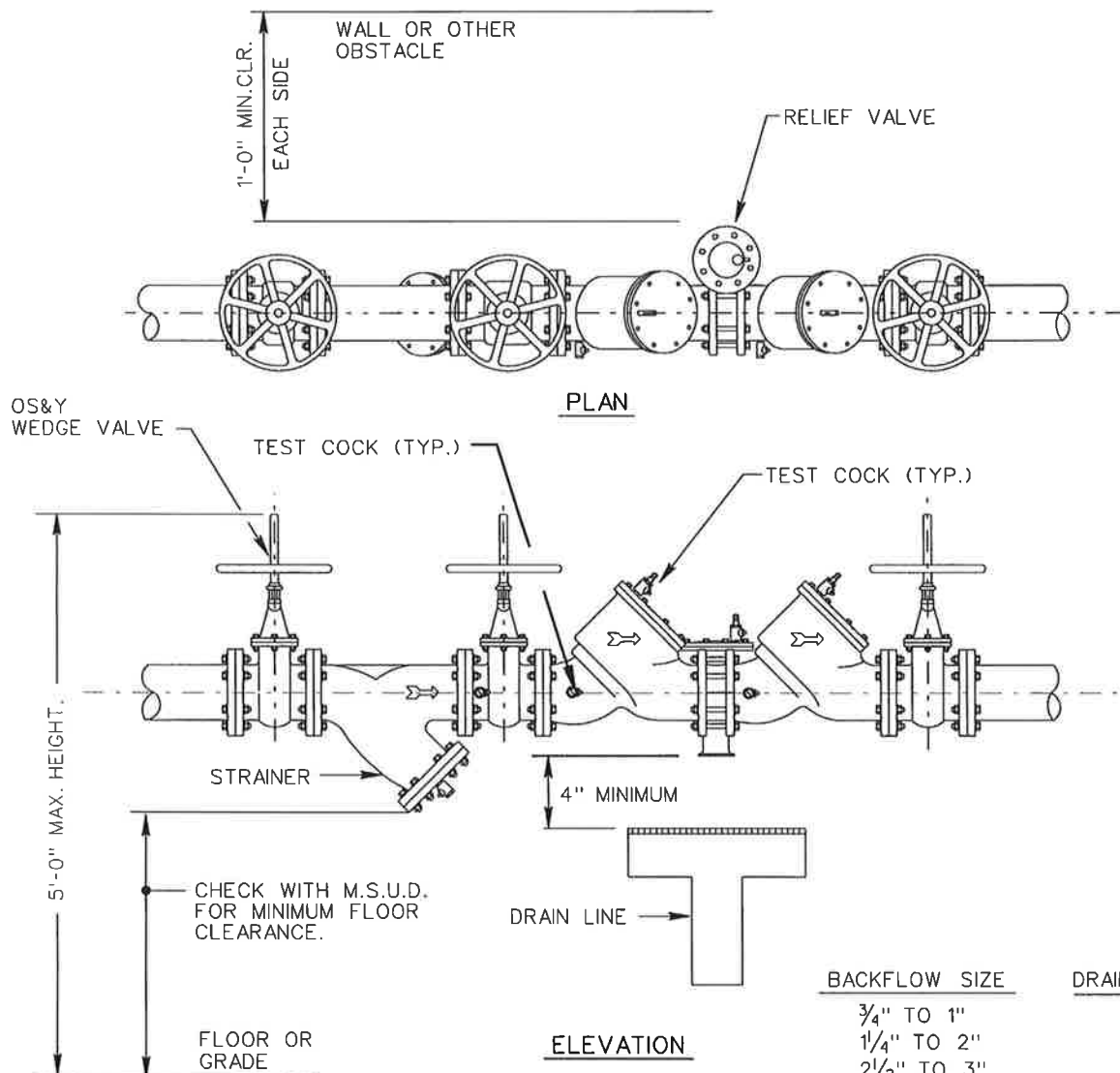
REVISED 1/12/99  
REVISED 4/04/03  
REVISED 4/14/03

REVISED 02/16/00  
REVISED 9/7/99

BF-SHEET\_02



NOTE: MUST ALSO SHOW SPECIFIC LOCATION AND DRAINAGE DETAILS



#### NOTES

ASSEMBLY SHALL BE HORIZONTALLY INSTALLED COMPLETE WITH CLEARANCES SHOWN.

OUTDOOR INSTALLATIONS SHALL BE PROVIDED WITH WEATHERPROOF ENCLOSURE AND FULL FREEZE PROTECTION. HEAT RECOMMENDED.

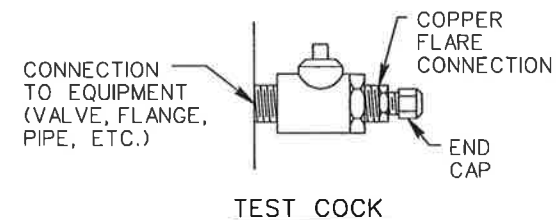
DRAIN LINE (INSIDE INSTALLATION ONLY) SHALL BE INSTALLED IN ACCORDANCE WITH THE M.S.U.D.'S INSTALLATION REQUIREMENTS.

BALL VALVES SHALL BE RESILIENT SEAT, 1/4 TURN, FULL PORT, BRONZE.

ALL DEVICES AND STRAINERS, EXCEPT THOSE MADE OF STAINLESS STEEL, SHALL BE EPOXY COATED.

PROVIDE TEST COCKS WITH WATER TIGHT TEST ADAPTORS, COPPER FLARE CONNECTIONS AND END CAPS.

FLOOR DRAINAGE MUST BE SHOWN AND OF ADEQUATE SIZE FOR PROPER DRAINAGE. REFER TO MSUD'S DRAIN LINE REQUIREMENTS FOR DETAILS.



BACKFLOW SIZE	DRAIN SIZE
3/4" TO 1"	3"
1 1/4" TO 2"	6"
2 1/2" TO 3"	6"
4" TO 6"	8"
8" TO 10"	10"

#### MADISON SUBURBAN UTILITY DISTRICT

2 1/2" - 10" REDUCED PRESSURE  
BACKFLOW PREVENTER ASSEMBLY

**JVE / BWSC**

Turner Professional Building  
5100 Linbar Drive, Suite 106  
Nashville, Tennessee 37211

SCALE: NONE  
DATE: 04/06/92

SHEET NO.

3

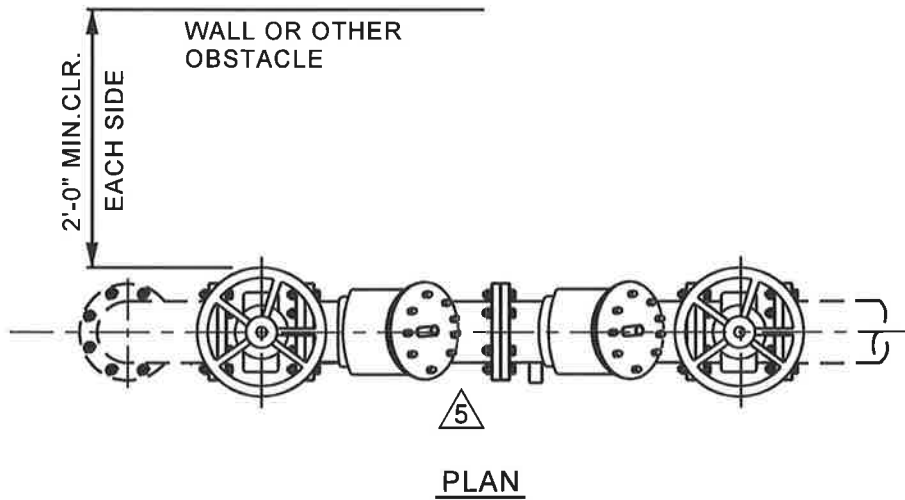
REVISED 1/12/99  
REVISED 02/19/03  
REVISED 4/14/03

REVISED 02/16/00  
REVISED 4/04/03

BF-SHEET\_03

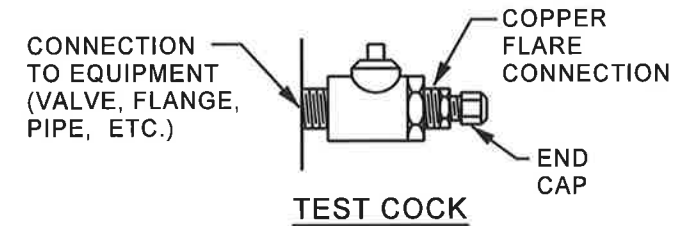
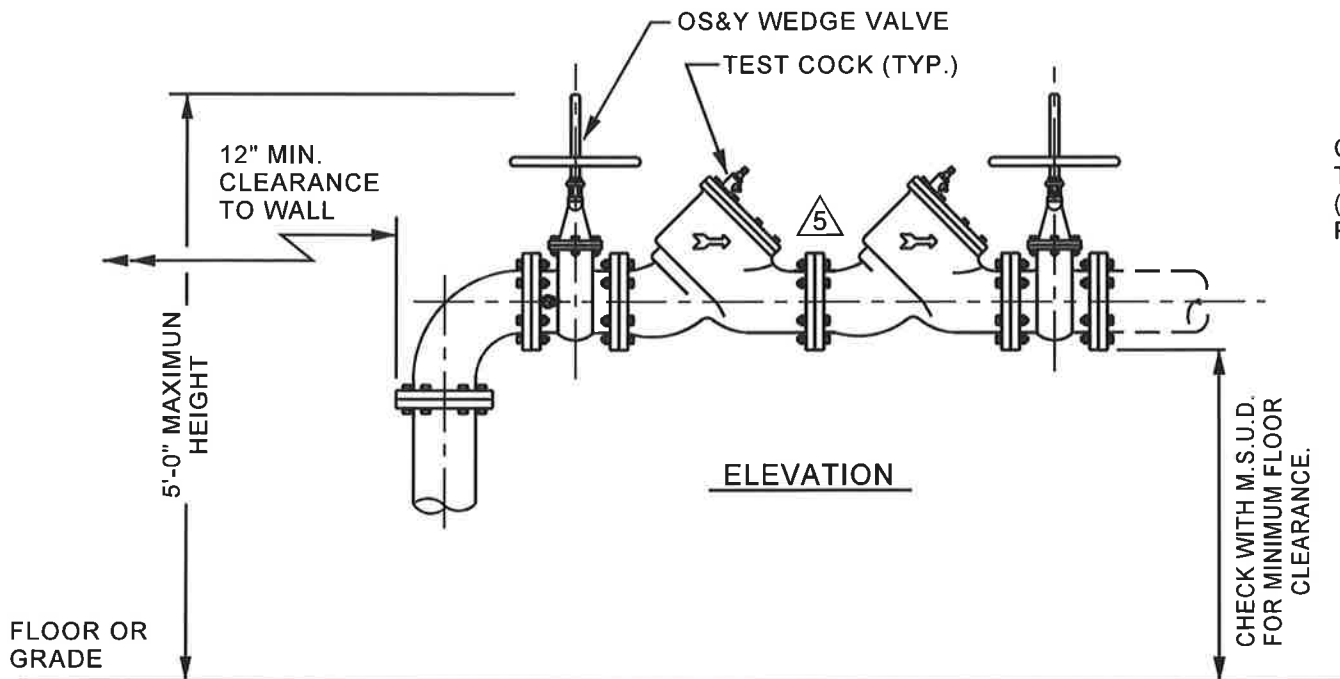


NOTE: MUST ALSO SHOW SPECIFIC LOCATION AND DRAINAGE DETAILS



NOTES:

1. ASSEMBLY SHALL BE HORIZONTALLY INSTALLED COMPLETE WITH CLEARANCES SHOWN.
2. OUTDOOR INSTALLATIONS SHALL BE PROVIDED WITH WEATHERPROOF ENCLOSURE AND FULL FREEZE PROTECTION. HEAT RECOMMENDED.
3. ALL DEVICES, EXCEPT THOSE MADE OF STAINLESS STEEL, SHALL BE EPOXY COATED.
4. PROVIDE TEST COCKS WITH WATER TIGHT TEST ADAPTORS, COPPER FLARE CONNECTIONS AND END CAPS.
5. SHUT-OFF VALVES SHALL BE RESILIENT SEAT, OS&Y, WEDGE TYPE.
6. FLOOR DRAINAGE MUST BE SHOWN AND OF ADEQUATE SIZE FOR PROPER DRAINAGE. REFER TO MSUD's DRAIN LINE REQUIREMENTS FOR DETAILS.
7. ALL BACKFLOW DEVICES MUST BE LEAD FREE.



**MADISON SUBURBAN  
UTILITY DISTRICT**

**4" - 10" DOUBLE DETECTOR  
CHECK VALVE ASSEMBLY**

**JVE / BWSC**

Turner Professional Building  
5100 Linbar Drive, Suite 106  
Nashville, Tennessee 37211

SCALE: N.T.S.

SHEET NO.

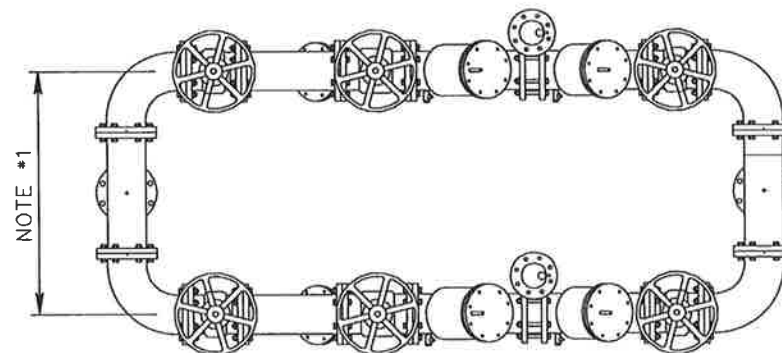
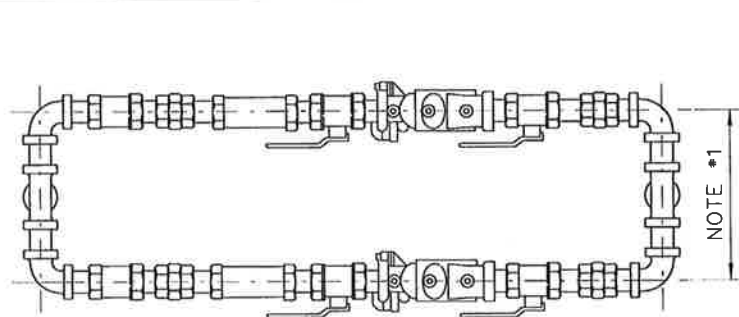
DATE: 04/06/92

4

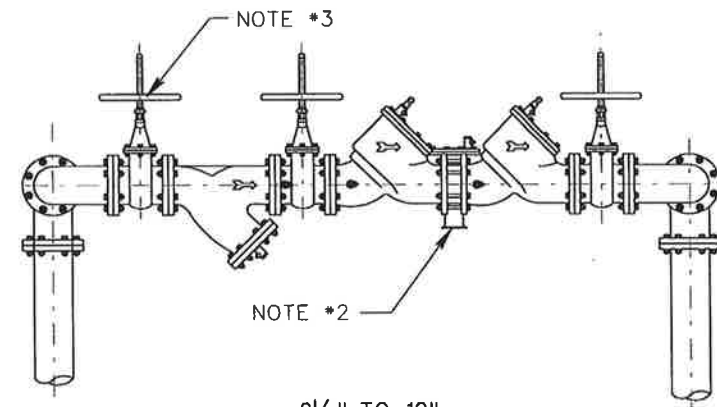
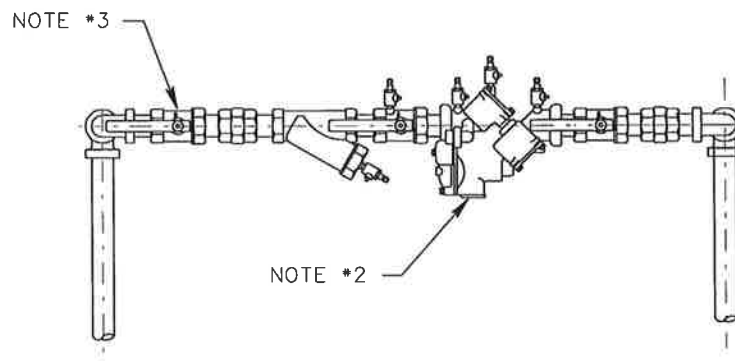
REVISED: 1/21/22 PER M.S.U.D. 5



NOTE: MUST ALSO SHOW SPECIFIC LOCATION AND DRAINAGE DETAILS



PLANS



ELEVATIONS

NOTES

1. SEE SHEETS #2 AND #3 FOR REQUIRED DEVICE AND PIPING CLEARANCES.
2. MIN. REQUIRED DISTANCE FOR SERVICING OR REPAIR OF ASSEMBLY DEVICES. OS&Y VALVES MAY BE ROTATED A MAXIMUM OF 45 DEGREES FROM VERTICAL.
3. RELIEF DRAINS CAN BE INTERCONNECTED, BUT COMBINED DRAIN SIZE SHALL BE SUFFICIENT TO PROPERLY HANDLE SIMULTANEOUS FLOWS FROM RELIEF VALVES. EACH DRAIN WITH SUFFICIENT SPLASH GUARD SHALL BE 2 1/2 TIMES THE DIAMETER OF THE RELIEF VALVE WITH MIN. 4" AIR GAP OPEN SPACE.
4. ISOLATION VALVE REQUIRED.
5. HORIZONTAL ASSEMBLY SHOWN - VERTICAL ASSEMBLY NOT ACCEPTABLE.
6. FLOOR DRAINAGE MUST BE SHOWN AND OF ADEQUATE SIZE FOR PROPER DRAINAGE. REFER TO MSUD's DRAIN LINE REQUIREMENT FOR DETAILS.

BACKFLOW SIZE	DRAIN SIZE
3/4" TO 1"	3"
1 1/4" TO 2"	6"
2 1/2" TO 3"	6"
4" TO 6"	8"
8" TO 10"	10"

MADISON SUBURBAN  
UTILITY DISTRICT

DOUBLE INSTALLATION ASSEMBLY  
REDUCED PRESSURE BACKFLOW PREVENTER

**JME/BWSC**

Turner Professional Building  
5100 Linbar Drive, Suite 106  
Nashville, Tennessee 37211

SCALE: NONE

SHEET NO.

DATE: 04/06/92

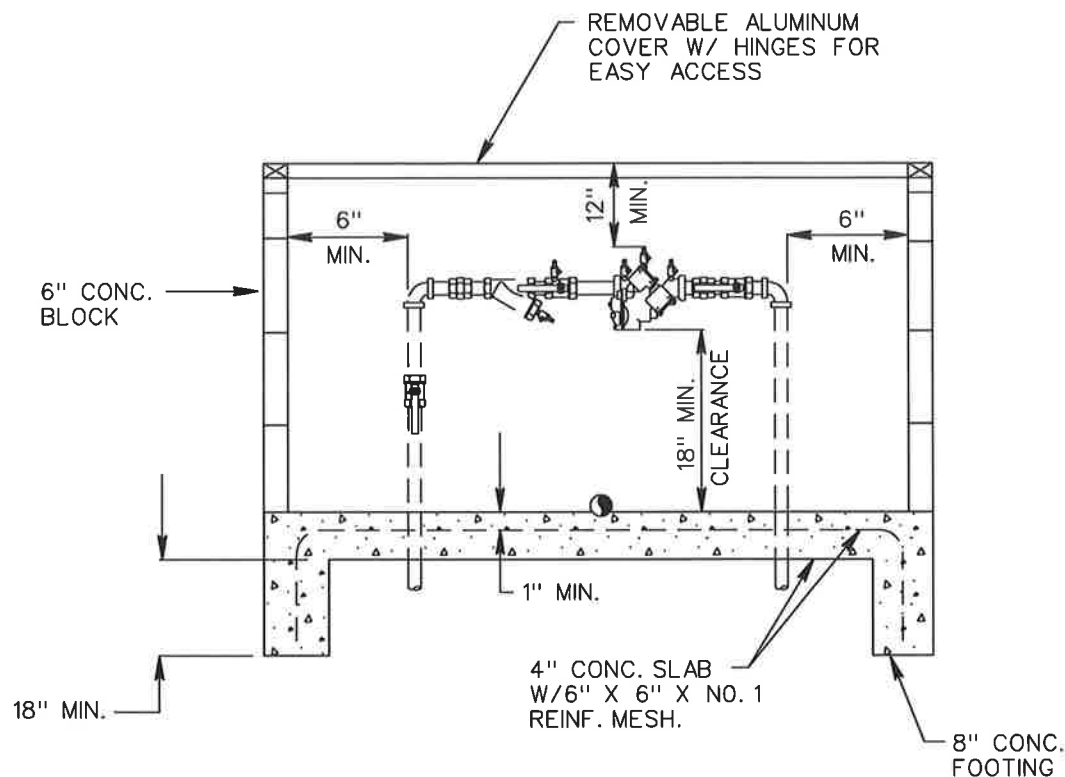
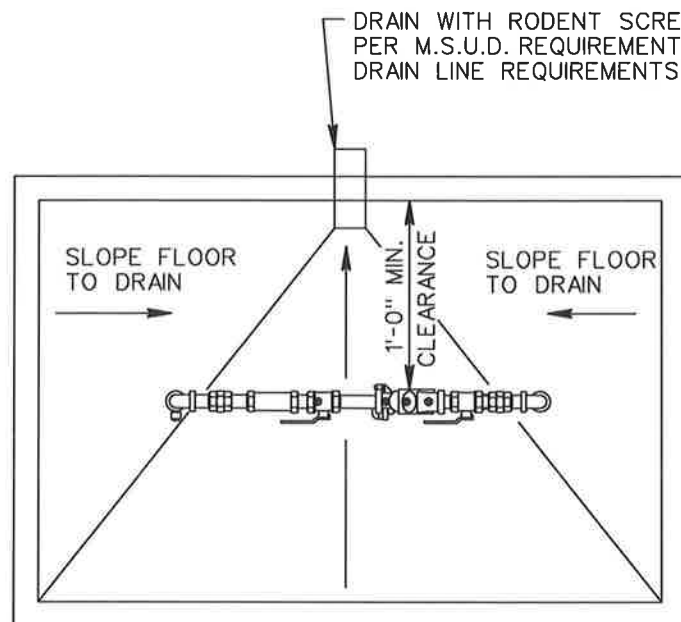
5

REVISED 07/12/95  
REVISED 1/12/99

REVISED 9/7/99  
REVISED 4/14/03

BF-SHEET\_05





## NOTES

THIS DRAWING INDICATES MINIMUM INSIDE DIMENSIONS FOR CLEARANCE AND ACCESS ONLY. THE PRINCIPAL OBJECTIVES ARE PROTECTION FOR THE INSTALLATION AND ADEQUATE CLEARANCES FOR EASE OF ACCESS AND MAINTENANCE.

INSULATION/HEATING IS RECOMMENDED TO PREVENT FREEZING.

SECURITY FASTENING MAY BE DESIRABLE IN SOME LOCATIONS.

THE FOOTING, SLAB, OR WALL DESIGN AND OUTSIDE FINISH IS OPTIONAL WITH OWNER. PREFABRICATED BOXES OF COMPARABLE DIMENSIONS MAY BE SUBSTITUTED, SUCH AS THE "AQUA SHIELD" OR "HOT BOX" BY COMMERCIAL INSULATION CO., INC., OR, "SAFETY COVER" OR "WATERSAFE" BY GRIFFIN & CANTRELL.

### BACKFLOW SIZE

$\frac{3}{4}$ " TO 1"  
1 $\frac{1}{4}$ " TO 2"

### DRAIN SIZE

3 - 3" DRAINS  
3 - 6" DRAINS

## MADISON SUBURBAN UTILITY DISTRICT

$\frac{3}{4}$ " - 2" REDUCED PRESSURE  
BACKFLOW PREVENTER ASSEMBLY BOX

**JVE / BWSC**

Turner Professional Building  
5100 Linbar Drive, Suite 106  
Nashville, Tennessee 37211

SCALE: NONE

SHEET NO.

DATE: 04/06/92

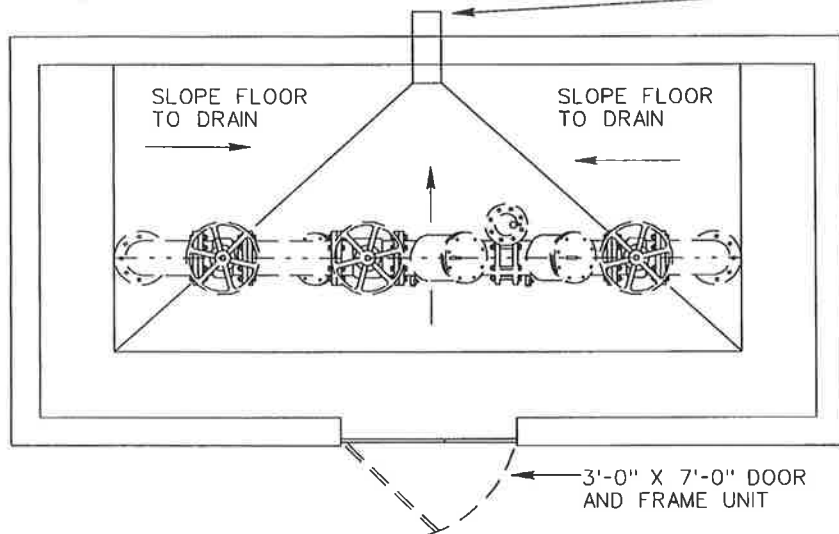
6

REVISED 07/12/95  
REVISED 04/11/97

REVISED 11/6/02  
REVISED 11/11/03

REVISED 5/24/21



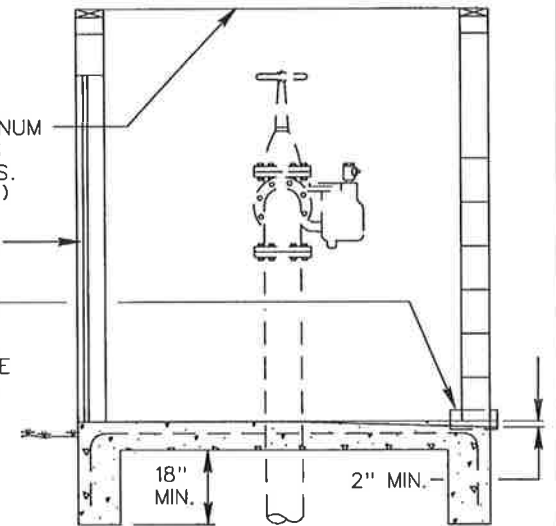


DRAIN WITH RODENT  
SCREEN INSIDE AND OUTSIDE  
PER M.S.U.D. REQUIREMENTS,  
REFER TO MSUD's DRAIN LINE  
REQUIREMENTS FOR DETAILS.

REMOVABLE ALUMINUM  
COVER W/ HINGES  
FOR EASY ACCESS.  
(MIN. 2'-8" X 6'-8")

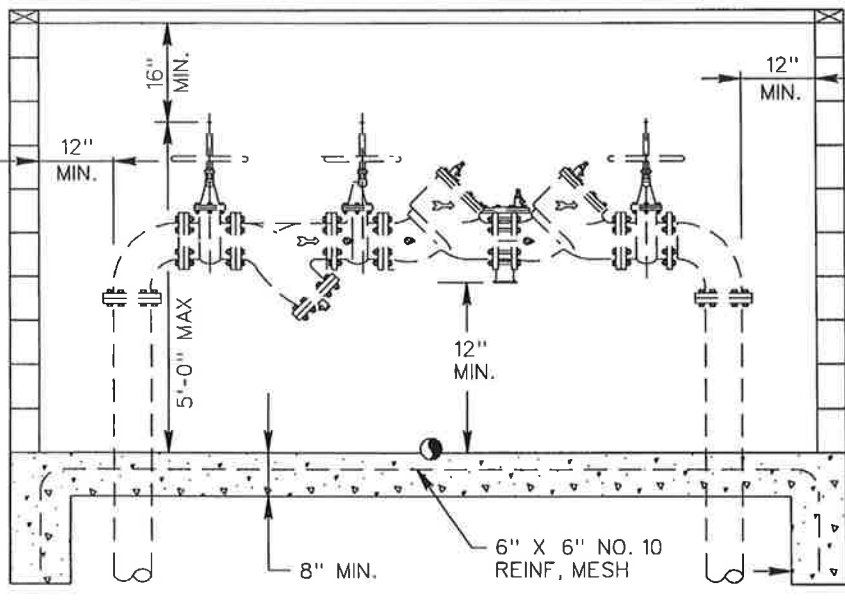
3'-0" X 7'-0" DOOR  
AND FRAME UNIT

DRAIN WITH RODENT  
SCREEN INSIDE AND OUTSIDE  
PER M.S.U.D. REQUIREMENTS,  
REFER TO MSUD's DRAIN LINE  
REQUIREMENTS FOR DETAILS.



#### NOTES

1. THIS DRAWING INDICATES MINIMUM INSIDE DIMENSIONS FOR CLEARANCE AND ACCESS ONLY. THE PRINCIPAL OBJECTIVES ARE PROTECTION FOR THE INSTALLATION AND ADEQUATE CLEARANCES FOR EASE OF ACCESS AND MAINTENANCE.
  - \* INSULATION / HEATING IS RECOMMENDED TO PREVENT FREEZING.
  - \* SECURITY FASTENING MAY BE DESIRABLE IN SOME LOCATIONS.
  - \* THE FOOTING, SLAB OR WALL DESIGN AND OUTSIDE FINISH IS OPTIONAL WITH OWNER. PREFABRICATED BOXES OF COMPARABLE DIMENSIONS MAY BE SUBSTITUTED, SUCH AS THE "AQUA SHIELD" OR "HOT BOX" BY COMMERCIAL INSULATION CO., INC., OR "SAFETY COVER" OR "WATERSAFE" BY GRIFFIN & CANTRELL.
2. 5'-0" MAXIMUM FROM FLOOR TO TOP OF OS&Y VALVE



6" CONC.  
BLOCKS  
(TYP.)

BACKFLOW SIZE

2 1/2" TO 3"  
4" TO 6"  
8" TO 10"

DRAIN SIZE

3 - 6" DRAINS  
3 - 8" DRAINS  
3 - 10" DRAINS

MADISON SUBURBAN  
UTILITY DISTRICT

2 1/2" - 10" REDUCED PRESSURE  
BACKFLOW PREVENTER ASSEMBLY BOX

**JVE/BWSC**

Turner Professional Building  
5100 Linbar Drive, Suite 106  
Nashville, Tennessee 37211

SCALE: NONE

DATE: 04/06/92

SHEET NO.

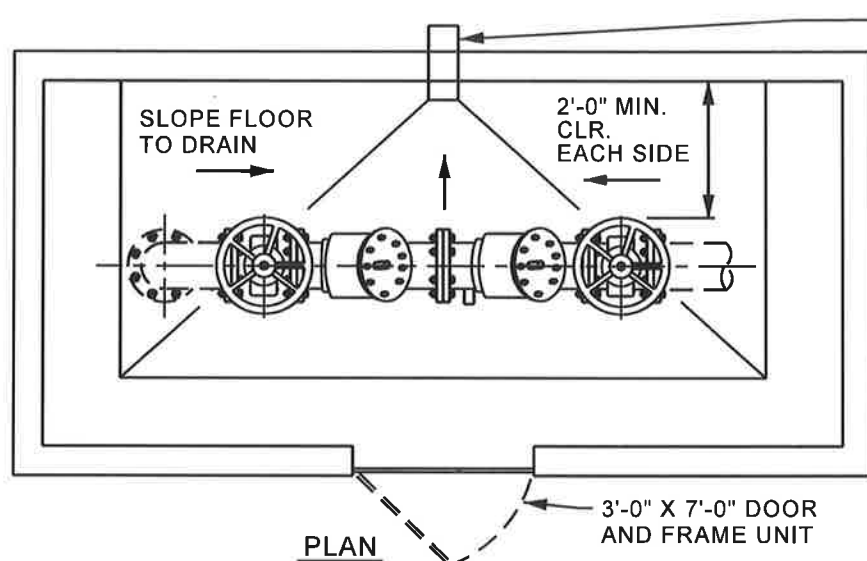
7

REVISED 07/12/95  
REVISED 01/12/99:

REVISED 11/06/02  
REVISED 4/14/03

BF-SHEET\_07



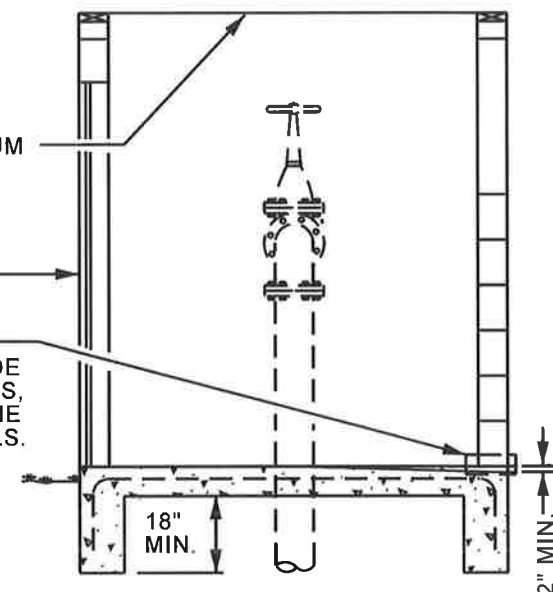


DRAIN WITH RODENT SCREEN INSIDE AND OUTSIDE PER M.S.U.D. REQUIREMENTS, REFER TO MSUD's DRAIN LINE REQUIREMENTS FOR DETAILS.

REMOVABLE ALUMINUM COVER W/ HINGES FOR EASY ACCESS. (MIN. 2'-8" X 6'-8")

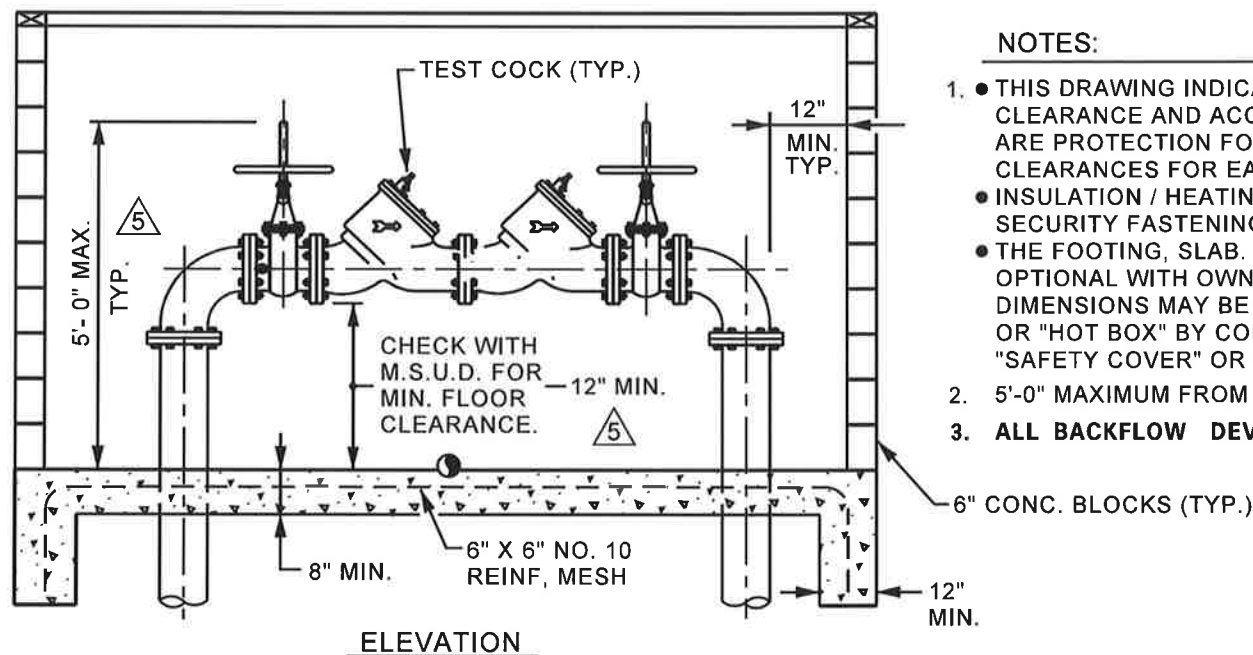
3'-0" X 7'-0" DOOR AND FRAME UNIT

DRAIN WITH RODENT SCREEN INSIDE AND OUTSIDE PER M.S.U.D. REQUIREMENTS, REFER TO MSUD's DRAIN LINE REQUIREMENTS FOR DETAILS.



#### NOTES:

- THIS DRAWING INDICATES MINIMUM INSIDE DIMENSIONS FOR CLEARANCE AND ACCESS ONLY. THE PRINCIPAL OBJECTIVES ARE PROTECTION FOR THE INSTALLATION AND ADEQUATE CLEARANCES FOR EASE OF ACCESS AND MAINTENANCE.
- INSULATION / HEATING IS RECOMMENDED TO PREVENT FREEZING. SECURITY FASTENING MAY BE DESIRABLE IN SOME LOCATIONS.
- THE FOOTING, SLAB, OR WALL DESIGN AND OUTSIDE FINISH IS OPTIONAL WITH OWNER. PREFABRICATED BOXES OF COMPARABLE DIMENSIONS MAY BE SUBSTITUTED, SUCH AS THE "AQUA SHIELD" OR "HOT BOX" BY COMMERCIAL INSULATION CO., INC., OR, "SAFETY COVER" OR "WATERSAFE" BY GRIFFIN & CANTRELL.
- 5'-0" MAXIMUM FROM FLOOR TO TOP OF OS&Y VALVE
- ALL BACKFLOW DEVICES MUST BE LEAD FREE.



#### BACKFLOW SIZE

2 1/2" TO 3"  
4" TO 6"  
8" TO 10"

#### DRAIN SIZE

3 - 6" DRAINS  
3 - 8" DRAINS  
3 - 10" DRAINS

### MADISON SUBURBAN UTILITY DISTRICT

4" - 10" DOUBLE DETECTOR  
CHECK VALVE ASSEMBLY - ASSEMBLY BOX

**JVE / BWSC**

Turner Professional Building  
5100 Linbar Drive, Suite 106  
Nashville, Tennessee 37211

SCALE: N.T.S.

SHEET NO.

DATE: 02/16/00

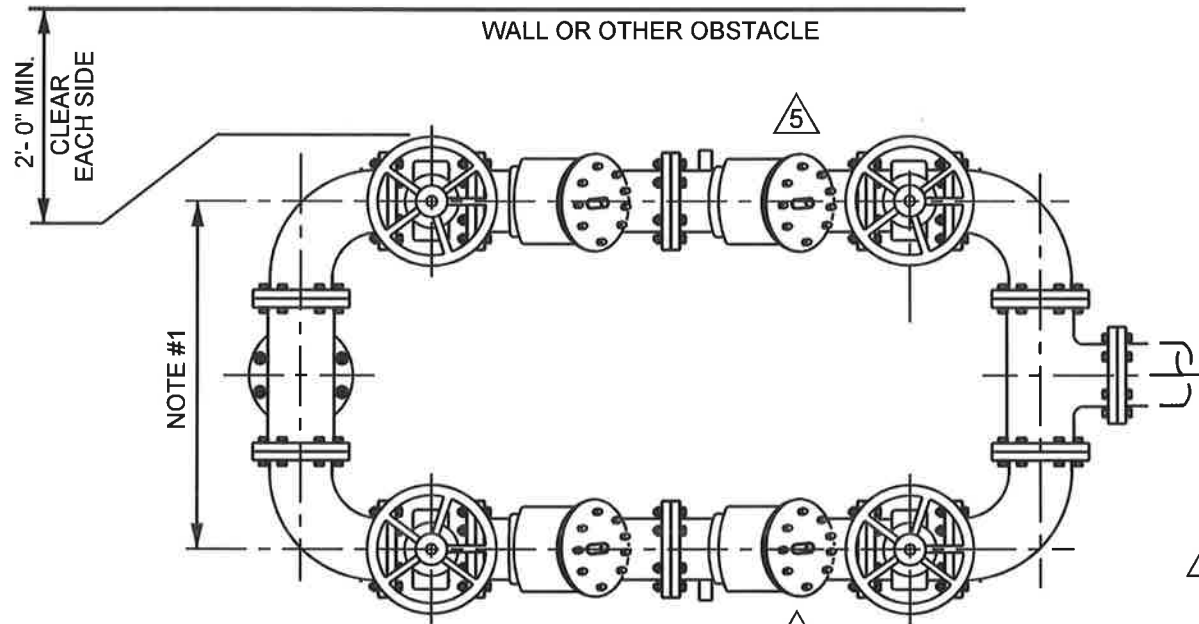
8

REVISED: 1/21/22 PER M.S.U.D.

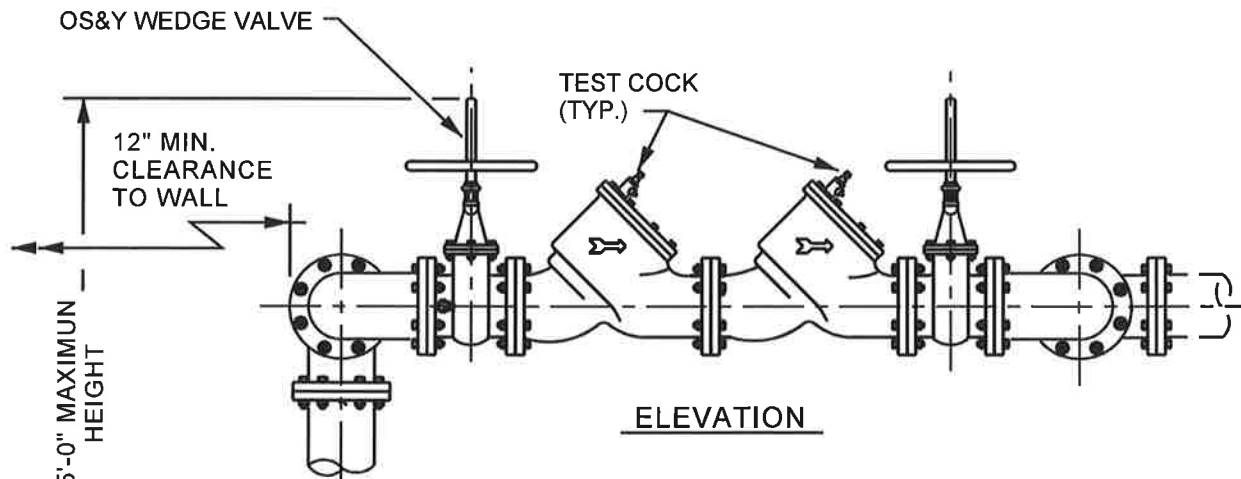
BF\_SHEET\_08



NOTE: MUST ALSO SHOW SPECIFIC LOCATION AND DRAINAGE DETAILS



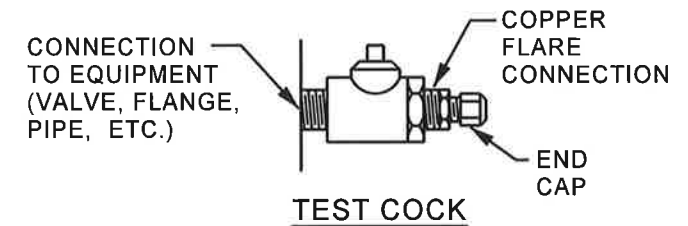
PLAN



ELEVATION

NOTES:

1. MINIMUM REQUIRED DISTANCE FOR SERVICING OR REPAIRING OF ASSEMBLY DEVICES.
2. ASSEMBLY SHALL BE HORIZONTALLY INSTALLED COMPLETE WITH CLEARANCES SHOWN.
3. OUTDOOR INSTALLATIONS SHALL BE PROVIDED WITH WEATHERPROOF ENCLOSURE AND FULL FREEZE PROTECTION. HEAT RECOMMENDED.
4. ALL DEVICES, EXCEPT THOSE MADE OF STAINLESS STEEL, SHALL BE EPOXY COATED. PROVIDE TEST COCKS ON BOTH DEVICES WITH WATER TIGHT TEST ADAPTORS, COPPER FLARE CONNECTIONS AND END CAPS.
5. SHUT-OFF VALVES SHALL BE RESILIENT SEAT, OS&Y, WEDGE TYPE.
6. FLOOR DRAINAGE MUST BE SHOWN AND OF ADEQUATE SIZE FOR PROPER DRAINAGE. REFER TO MSUD's DRAIN LINE REQUIREMENTS FOR DETAILS.
7. **ALL BACKFLOW DEVICES MUST BE LEAD FREE.**



**MADISON SUBURBAN  
UTILITY DISTRICT**

**4" - 10" DOUBLE DETECTOR CHECK  
VALVE ASSEMBLY DUAL INSTALLATION**

**JVE / BWSC**

Turner Professional Building  
5100 Linbar Drive, Suite 106  
Nashville, Tennessee 37211

SCALE: N.T.S.

SHEET NO.

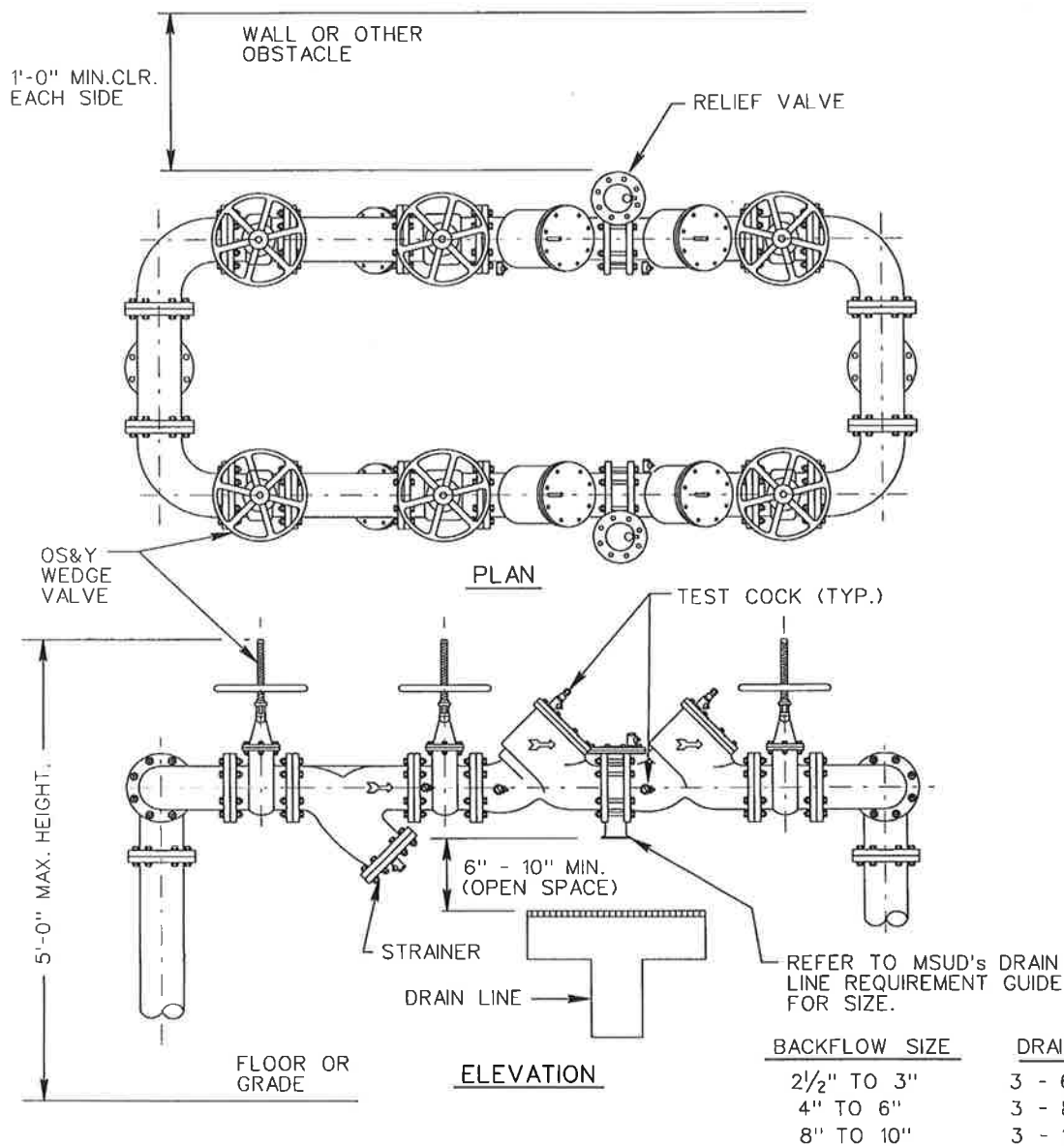
DATE: 11/06/02

9

REVISED: 1/21/22 PER M.S.U.D. 5



NOTE: MUST ALSO SHOW SPECIFIC LOCATION AND DRAINAGE DETAILS



# NOTES

ASSEMBLY SHALL BE HORIZONTALLY INSTALLED COMPLETE WITH CLEARANCES SHOWN.

OUTDOOR INSTALLATIONS SHALL BE PROVIDED WITH WEATHERPROOF ENCLOSURE AND FULL FREEZE PROTECTION. HEAT RECOMMENDED.

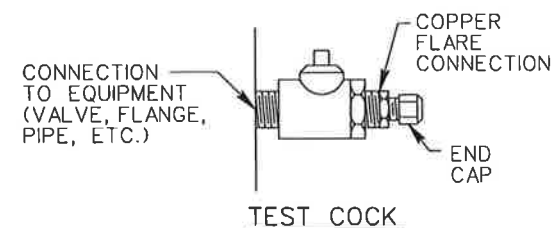
DRAIN LINE (INSIDE INSTALLATION ONLY) SHALL BE INSTALLED IN ACCORDANCE WITH THE M.S.U.D.'S INSTALLATION REQUIREMENTS.

BALL VALVES SHALL BE RESILIENT SEAT, 1/4 TURN, FULL PORT, BRONZE.

ALL DEVICES AND STRAINERS, EXCEPT THOSE MADE OF STAINLESS STEEL, SHALL BE EPOXY COATED.

PROVIDE TEST COCKS ON BOTH DEVICES WITH WATER TIGHT TEST ADAPTORS, COPPER FLARE CONNECTIONS AND END CAPS.

FLOOR DRAINAGE MUST BE SHOWN AND OF ADEQUATE SIZE FOR PROPER DRAINAGE. REFER TO MSUD's DRAIN LINE REQUIREMENTS FOR DETAILS.



## MADISON SUBURBAN UTILITY DISTRICT

2 1/2" - 10" REDUCED PRESSURE BACKFLOW PREVENTER ASSEMBLY DOUBLE INSTALLATION

**JVE / BWSC**

Turner Professional Building  
5100 Linbar Drive, Suite 106  
Nashville, Tennessee 37211

SCALE: NONE

SHEET NO.

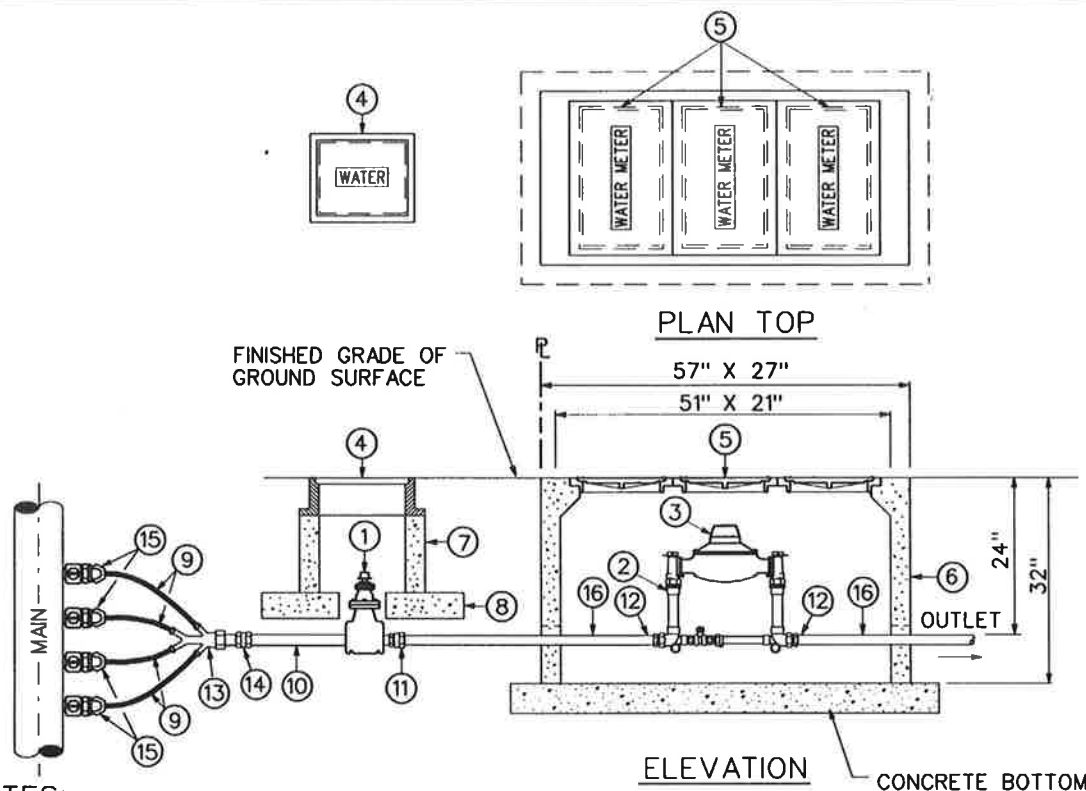
DATE: 11/06/02

10

REVISED 4/14/03

BF-SHEET-10





#### NOTES:

1. CONNECTIONS:  
ALL COPPER CONNECTIONS AND FITTINGS WILL BE FLARE TYPE. USE TEFLON TAPE OR JOINT COMPOUND ON ALL THREADED CONNECTIONS.
2. WASHERS WILL BE FIBER OR RUBBER
3. ALL WORK TO BE INSPECTED BY M.S.U.D. AFTER WORK IS COMPLETE AND BEFORE BACKFILLING.
4. CONTRACTOR IS REQUIRED TO INSTALL A PRESSURE REDUCING VALVE (PRV) ON THE WATER USER'S SIDE OF THE METER OUTSIDE THE METER BOX FOR INSTALLATIONS WHICH HAVE A STATIC PRESSURE (NO WATER FLOW) OF 100 POUNDS PER SQUARE INCH (PSI) OR GREATER. THE WATER USER SHALL BE RESPONSIBLE FOR MAINTAINING THE PRV IN A GOOD WORKING CONDITION. M.S.U.D. IS NOT RESPONSIBLE FOR REPLACING ANY PORTION OF THE PRV.
5. ALL WATER METERS SHALL BE PLACED OUTSIDE OF ANY PAVED AREA SUCH AS DRIVEWAYS, ROADS, ETC.

#### MATERIAL SCHEDULE

- ① 2" GATE VALVE  
OPEN LEFT, RESILIENT WEDGE  
2" SQUARE OPERATING NUT
- ② FORD VV77-12B-11-77 1 1/2" COPPERSETTER  
W/BY-PASS OR APPROVED EQUAL  
F.I.P. INLET AND OUTLET SERVICE CONNECTION  
ANGLE METER VALVES INLET AND OUTLET  
12" HEIGHT
- ③ 1 1/2" DIRECT READ METER W/TEST PLUG  
FLANGED - INDICATING IN CUBIC FEET
- ④ C.I. METER BOX FRAME AND COVER  
JOHN BOUCHARD •8006 NASHVILLE  
STANDARD OR APPROVED EQUAL
- ⑤ C.I. METER BOX FRAME AND COVER  
JOHN BOUCHARD •8110 NASHVILLE  
STANDARD OR APPROVED EQUAL
- ⑥ 2" METER BOX W/BASE, PRE-CAST CONCRETE
- ⑦ VALVE BOX, PRE-CAST CONCRETE
- ⑧ 12"x12"x4" CONCRETE VALVE BOX FOOTING
- ⑨ SERVICE MATERIAL  
1" 'K' TYPE SOFT COPPER TUBING
- ⑩ 2" X 20" BRASS NIPPLE
- ⑪ 2" THREADED BRASS OR SOFT COPPER FLARE.
- ⑫ CONNECTIONS TO COPPERSETTER:  
USE THREADED PIPE WITH 2" x 1 1/2" BUSHING,  
BRASS OR SOFT COPPER.

#### EXISTING MAIN ONLY

- ⑬ FOUR BRANCH HOOK-UP  
McDONALD 08Y4MC  
MUELLER H-15351  
INLETS: 1" COPPER FLARE  
OUTLETS: 2" MIP THREAD
- ⑭ 2" BRASS THREADED COUPLING,  
FEMALE x FEMALE.
- ⑮ 4 - 1" CORPORATION STOPS.  
(MINIMUM 16" APART)  
McDONALD 4701  
WITH 4776S 90° BEND  
MUELLER H-15020
- ⑯ SOFT COPPER OR BRASS.

MADISON SUBURBAN  
UTILITY DISTRICT

1 1/2" METER INSTALLATION

**JVE / BWSC**

Turner Professional Building  
5100 Linbar Drive, Suite 106  
Nashville, Tennessee 37211

SCALE: N.T.S.

DATE: 8/3/06

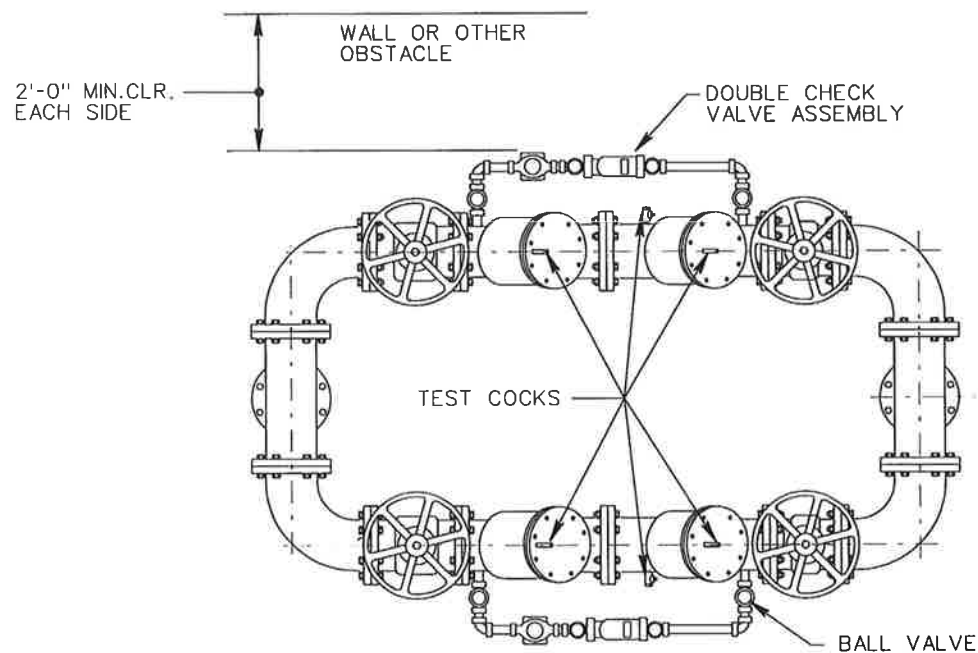
SHEET NO.

11

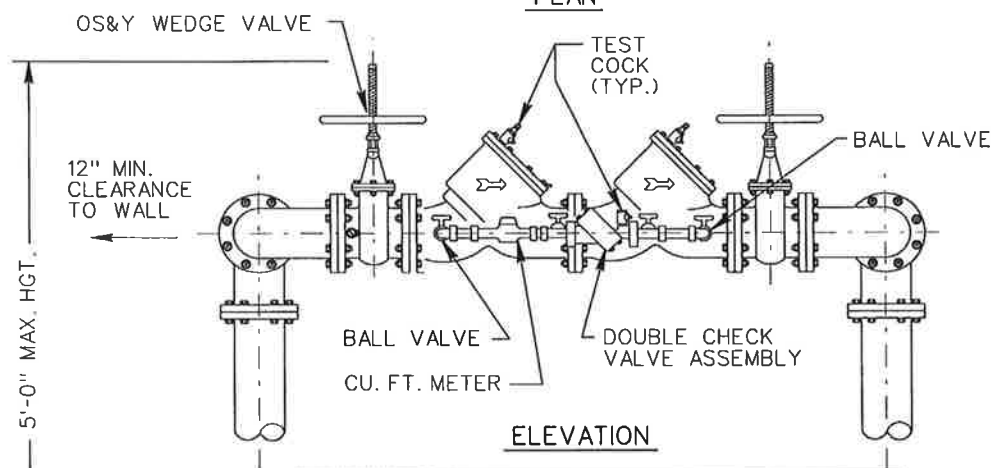
M-SHEET-11



NOTE: MUST ALSO SHOW SPECIFIC LOCATION AND DRAINAGE DETAILS



PLAN



ELEVATION

M.S.U.D. REQUIRES A SCHLUMBERGER MODEL T10, PRO READ WITH WALL MOUNT TOUCH PAD (UNITS IN CUBIC FEET.)

# NOTES

ASSEMBLY SHALL BE HORIZONTALLY INSTALLED COMPLETE WITH CLEARANCES SHOWN.

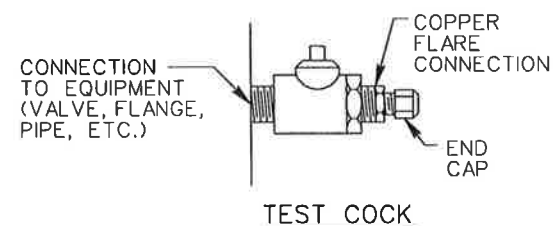
OUTDOOR INSTALLATIONS SHALL BE PROVIDED WITH WEATHERPROOF ENCLOSURE AND FULL FREEZE PROTECTION ENCLOSURE. HEAT RECOMMENDED.

ALL DEVICES, EXCEPT THOSE MADE OF STAINLESS STEEL, SHALL BE EPOXY COATED.

PROVIDE TEST COCKS ON BOTH DEVICES WITH WATER TIGHT TEST ADAPTORS, COPPER FLARE CONNECTIONS AND END CAPS.

SHUT-OFF VALVES SHALL BE RESILIENT SEAT, OS&Y, WEDGE TYPE.

FLOOR DRAINAGE MUST BE SHOWN AND OF ADEQUATE SIZE FOR PROPER DRAINAGE. (REFER TO MSUD's DRAIN LINE REQUIREMENT GUIDE.)



MADISON SUBURBAN  
UTILITY DISTRICT

4" - 10" DOUBLE DETECTOR CHECK VALVE  
ASSEMBLY DOUBLE INSTALLATION

**JVE/BWSC**

Turner Professional Building  
5100 Linbar Drive, Suite 106  
Nashville, Tennessee 37211

SCALE: NONE

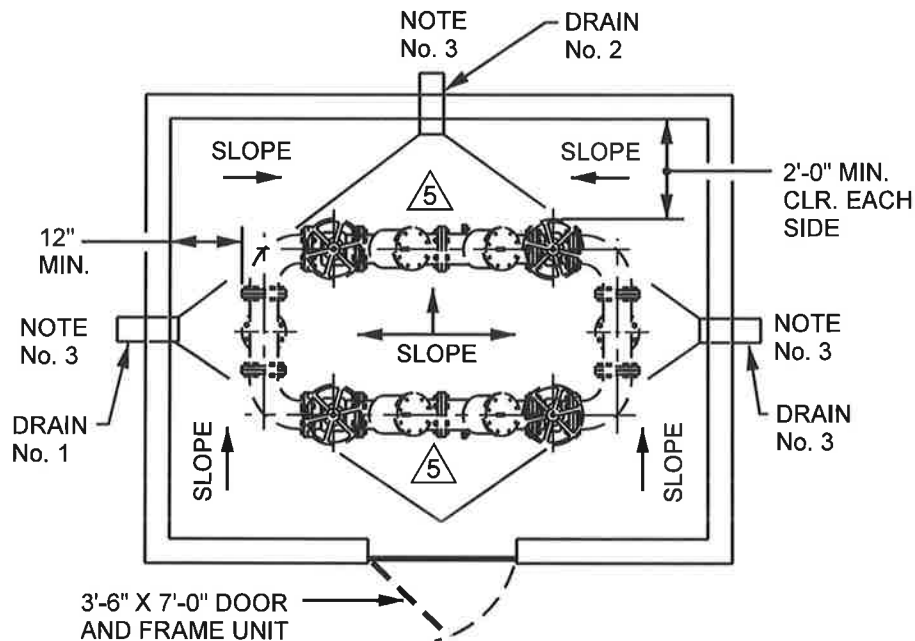
SHEET NO.

DATE: 11/06/02

12

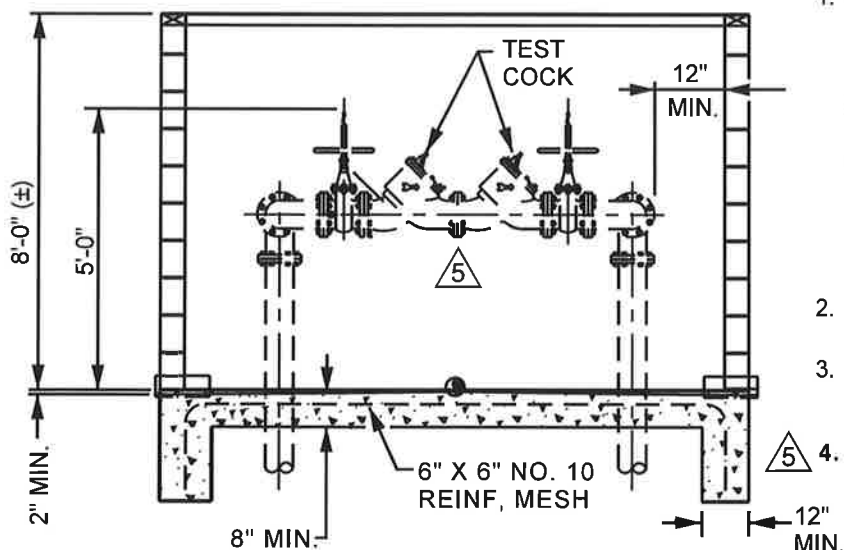
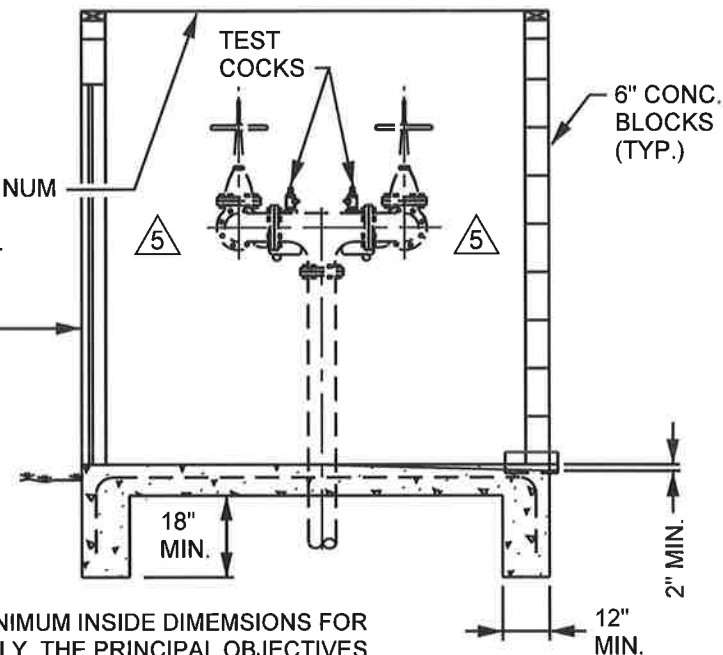
BF-SHEET-12





REMOVABLE ALUMINUM COVER W/ HINGES FOR EASY ACCESS. (MIN. 2'-8" X 6'-8")

3'-6" X 7'-0" DOOR AND FRAME UNIT



- THIS DRAWING INDICATES MINIMUM INSIDE DIMENSIONS FOR CLEARANCE AND ACCESS ONLY. THE PRINCIPAL OBJECTIVES ARE PROTECTION FOR THE INSTALLATION AND ADEQUATE CLEARANCES FOR EASE OF ACCESS AND MAINTENANCE.
- INSULATION / HEATING IS RECOMMENDED TO PREVENT FREEZING. SECURITY FASTENING MAY BE DESIRABLE IN SOME LOCATIONS.
- THE FOOTING, SLAB, OR WALL DESIGN AND OUTSIDE FINISH IS OPTIONAL WITH OWNER. PREFABRICATED BOXES OF COMPARABLE DIMENSIONS MAY BE SUBSTITUTED, SUCH AS THE "AQUA SHIELD" OR "HOT BOX" BY COMMERCIAL INSULATION CO., INC., OR, "SAFETY COVER" OR "WATERSAFE" BY GRIFFIN & CANTRELL.
- 5'-0" MAXIMUM FROM FLOOR TO TOP OF OS&Y VALVE
- DRAIN WITH RODENT SCREEN INSIDE AND OUTSIDE PER M.S.U.D. REQUIREMENTS, DRAIN SIZE SHALL BE AS FOLLOWS:
- ALL BACKFLOW DEVICES MUST BE LEAD FREE.**

**BACKFLOW SIZE**

2 1/2" TO 3"  
4" TO 6"  
8" TO 10"

**DRAIN SIZE**

3 - 6" DRAINS  
3 - 8" DRAINS  
3 - 10" DRAINS

**MADISON SUBURBAN UTILITY DISTRICT**

4" - 10" DOUBLE DETECTOR CHECK VALVE ASSY. DOUBLE INSTALLATION BOX

**JVE / BWSC**

Turner Professional Building  
5100 Linbar Drive, Suite 106  
Nashville, Tennessee 37211

SCALE: N.T.S.

DATE: 11/06/02

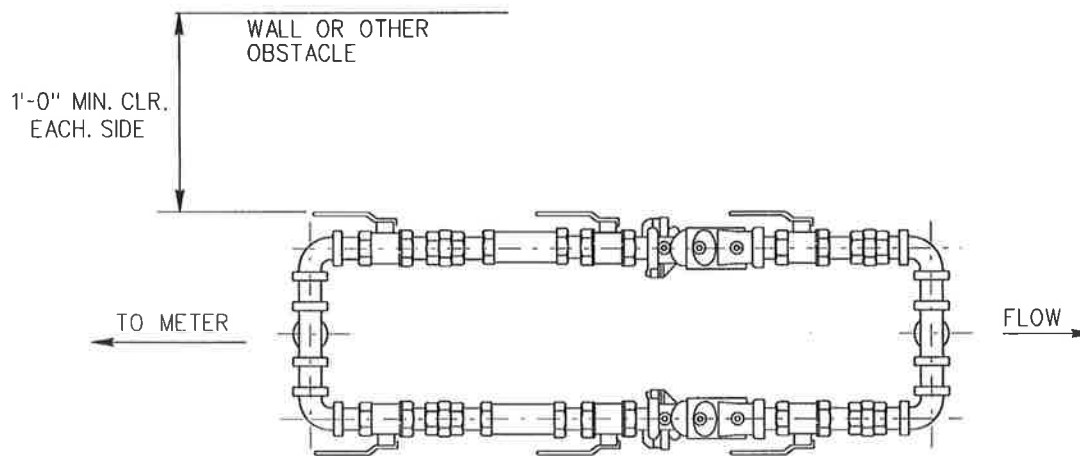
SHEET NO.

13

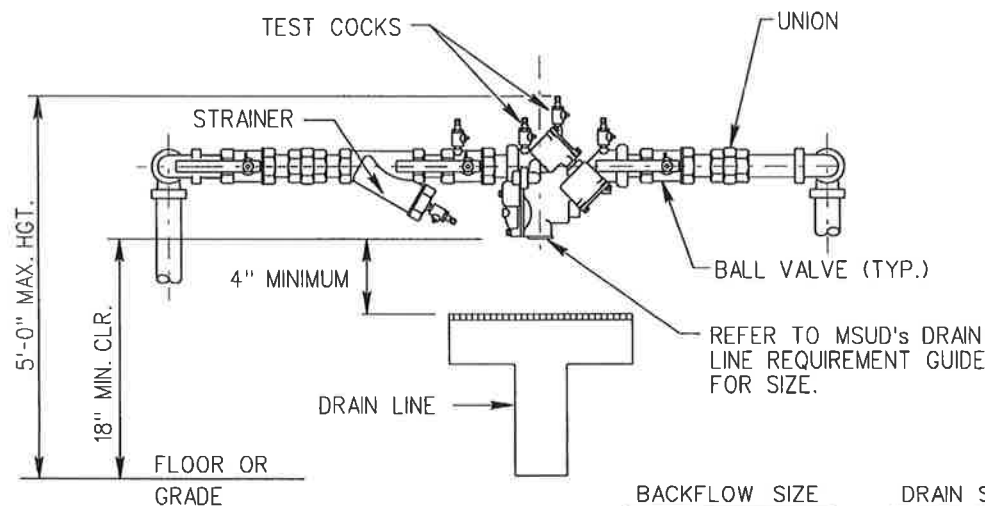
REVISED: 1/21/22 PER M.S.U.D. 5



NOTE: MUST ALSO SHOW SPECIFIC LOCATION AND DRAINAGE DETAILS



PLAN



ELEVATION

BACKFLOW SIZE	DRAIN SIZE
2 1/2" TO 3"	3 - 6" DRAINS
4" TO 6"	3 - 8" DRAINS
8" TO 10"	3 - 10" DRAINS

### NOTES

ASSEMBLY SHALL BE HORIZONTALLY INSTALLED COMPLETE WITH CLEARANCES SHOWN.

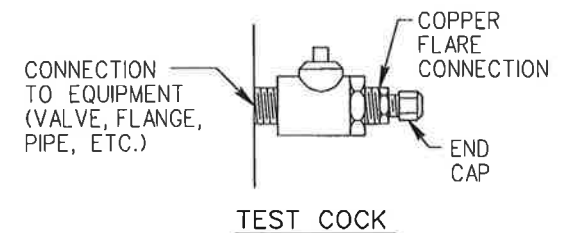
OUTDOOR INSTALLATIONS SHALL BE PROVIDED WITH WEATHERPROOF ENCLOSURE AND FULL FREEZE PROTECTION ENCLOSURE. HEAT RECOMMENDED.

DRAIN LINE (INSIDE INSTALLATION ONLY) SHALL BE INSTALLED IN ACCORDANCE WITH THE M.S.U.D.'S INSTALLATION REQUIREMENTS.

BALL VALVES SHALL BE RESILENT SEAT, 1/4 TURN, FULL PORT, BRONZE.

PROVIDE TEST COCKS ON BOTH DEVICES WITH WATER TIGHT TEST ADAPTORS, COPPER FLARE CONNECTIONS AND END CAPS.

FLOOR DRAINAGE MUST BE SHOWN AND OF ADEQUATE SIZE FOR PROPER DRAINAGE. (REFER TO MSUD's DRAIN LINE REQUIREMENT GUIDE.)



### MADISON SUBURBAN UTILITY DISTRICT

3/4" - 2" REDUCED PRESSURE BACKFLOW PREVENTER ASSY. DOUBLE INSTALLATION

**JVE / BWSC**

Turner Professional Building  
5100 Linbar Drive, Suite 106  
Nashville, Tennessee 37211

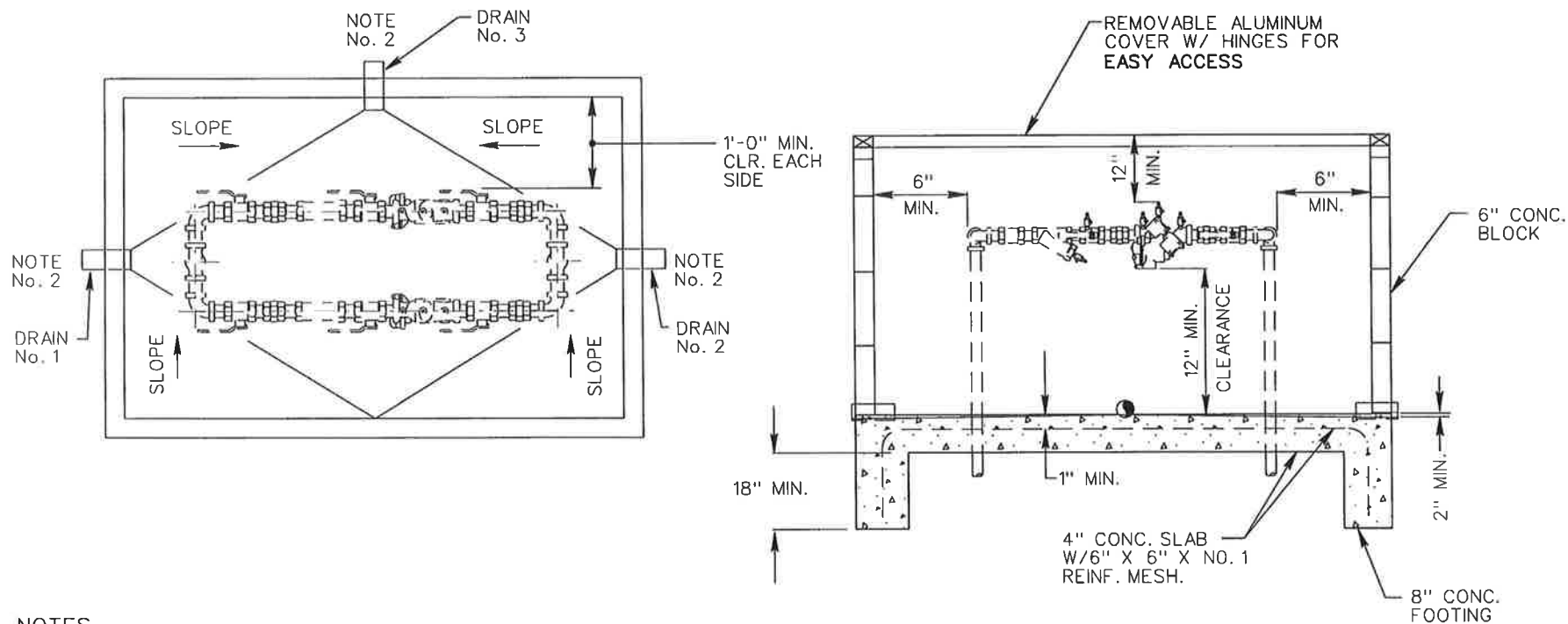
SCALE: NONE  
DATE: 11/06/02

SHEET NO. 14

REVISED 4/14/03

BF\_SHEET\_14





## NOTES

1. THIS DRAWING INDICATES MINIMUM INSIDE DIMENSIONS FOR CLEARANCE AND ACCESS ONLY. THE PRINCIPAL OBJECTIVES ARE PROTECTION FOR THE INSTALLATION AND ADEQUATE CLEARANCES FOR EASE OF ACCESS AND MAINTENANCE. INSULATION / HEATING IS RECOMMENDED TO PREVENT FREEZING. SECURITY FASTENING MAY BE DESIRABLE IN SOME LOCATIONS. THE FOOTING, SLAB, OR WALL DESIGN AND OUTSIDE FINISH IS OPTIONAL WITH OWNER. PREFABRICATED BOXES OF COMPARABLE DIMENSIONS MAY BE SUBSTITUTED, SUCH AS THE "AQUA SHIELD" OR "HOT BOX" BY COMMERCIAL INSULATION CO., INC., OR, "SAFETY COVER" OR "WATERSAFE" BY GRIFFIN & CANTRELL.

2. DRAIN WITH RODENT SCREEN INSIDE AND OUTSIDE PER M.S.U.D. REQUIREMENTS, DRAIN SIZE SHALL BE AS FOLLOWS:

BACKFLOW SIZE	DRAIN SIZE
$\frac{3}{4}$ " TO 1"	3 - 3" DRAINS
$1\frac{1}{4}$ " TO 2"	3 - 6" DRAINS

## MADISON SUBURBAN UTILITY DISTRICT

$\frac{3}{4}$ " - 2" REDUCED PRESSURE BACKFLOW  
PREVENTER ASSY. DOUBLE INSTALLATION BOX

**JVE / BWSC**

Turner Professional Building  
5100 Linbar Drive, Suite 106  
Nashville, Tennessee 37211

SCALE: NONE

DATE: 11/06/02

SHEET NO.

15