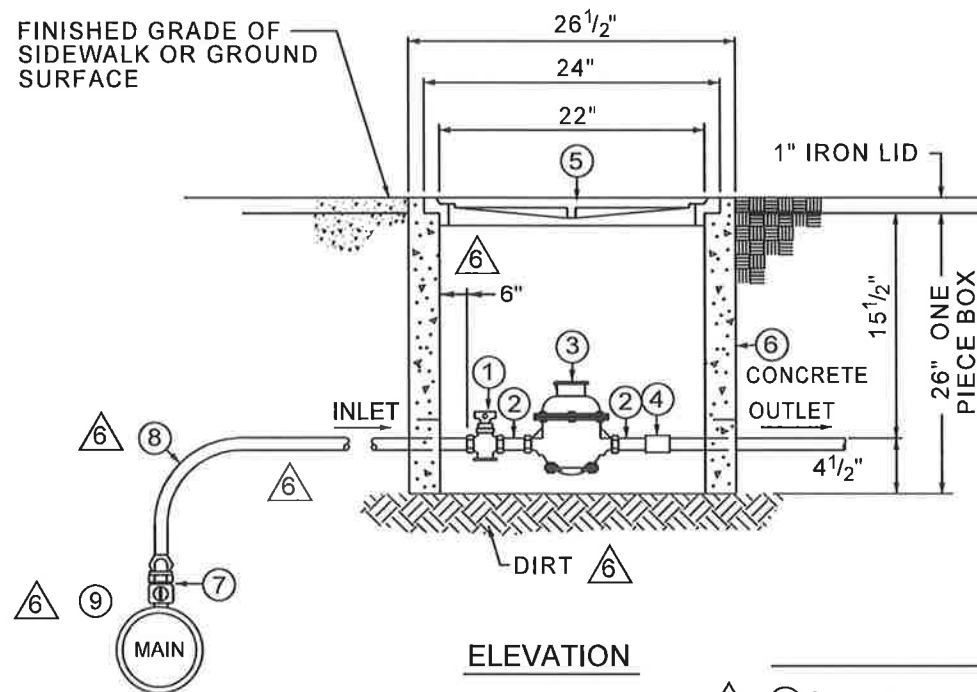
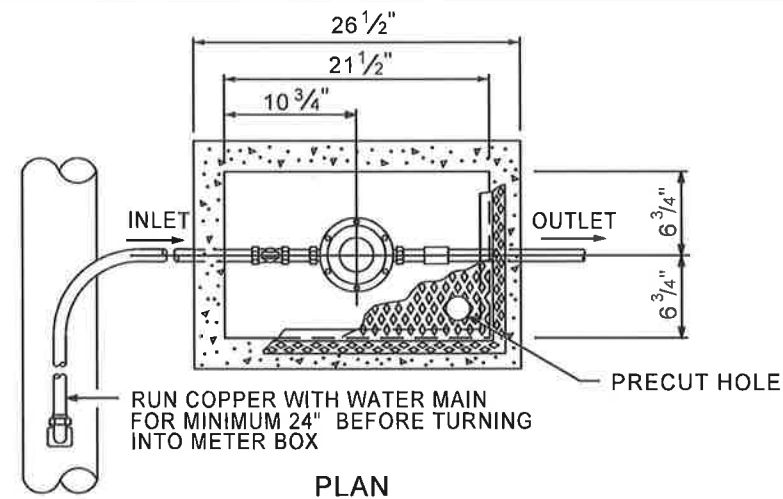


FINISHED GRADE OF
SIDEWALK OR GROUND
SURFACE



ELEVATION



PLAN

MATERIAL SCHEDULE

- | | |
|---|--|
| <p>① 3/4" CURB STOP
MUELLER: B-25163-N 3/4"
FORD: FB41-233W-Q-NL 3/4"</p> <p>② 3/4" x 2 1/2" BRASS METER COUPLING (2)</p> <p>③ 5/8" x 3/4" METER NEPTUNE RADIO
READ WITH ANTENNA.</p> <p>④ 3/4" BRASS COUPLING (OUTLET)</p> <p>⑤ C.I. METER BOX FRAME AND COVER
WITH PRECUT HOLE AND CAP
JOHN BOUCHARD #8110 NASHVILLE
STANDARD OR APPROVED EQUAL
WITH HOLE PRECUT INTO BOX AND
PLASTIC CAP ON IT. (SHALL NOT BE
IMPRINTED WITH THE NAME "METRO")</p> <p>⑥ 3/4" METER BOX, ONE PIECE PRE-CAST
CONCRETE.</p> <p>⑦ 3/4" CORPORATION STOP
MUELLER: H-15030-N 3/4"
FORD: F600-3-LN-NL 3/4"
FORD: L04-33-Q-NL 3/4" 90° BEND</p> | <p>⑧ SERVICE MATERIAL (SHEPARD HOOK)
3/4" 'K' TYPE SOFT COPPER TUBING</p> <p>⑨ (TAPPING SADDLE) C-900 MAIN CONNECTIONS
ONLY. SMITH BLAIR #313 DOUBLE STRAP
WITH 3/4" 'CC' THREADS. (FOR P.V.C. ONLY)</p> <p>⑩ ALL BACKFILL SHALL BE #57 STONE.</p> |
|---|--|

NOTES:

- ALL WORK TO BE INSPECTED BY M.S.U.D. AFTER WORK IS COMPLETE AND BEFORE BACKFILLING. TAPS WILL BE MADE WITHIN TWO WEEKS, WEATHER PERMITTING.
- ALL WATER METERS SHALL BE PLACED OUTSIDE OF ANY PAVED AREA SUCH AS DRIVEWAYS, ROADS, ETC. METER BOX NEEDS TO BE 1" ABOVE FINISHED GRADE. PLACE METER IN GREEN SPACE.
- CONNECTIONS:
ALL COPPER CONNECTIONS AND FITTINGS WILL BE COMPRESSION. USE TEFLON TAPE OR JOINT COMPOUND ON ALL THREADED CONNECTIONS.
- WASHERS WILL BE FIBER.
- COPPER FROM MAIN TO METER SHALL BE ONE CONTINUOUS PIECE OF K COPPER.
- ALL BOLTS SHALL BE STAINLESS STEEL.

MADISON SUBURBAN UTILITY DISTRICT

5/8" - 3/4" METER INSTALLATION

JVE / BWSC

Turner Professional Building
5100 Linbar Drive, Suite 106
Nashville, Tennessee 37211

SCALE: N.T.S.

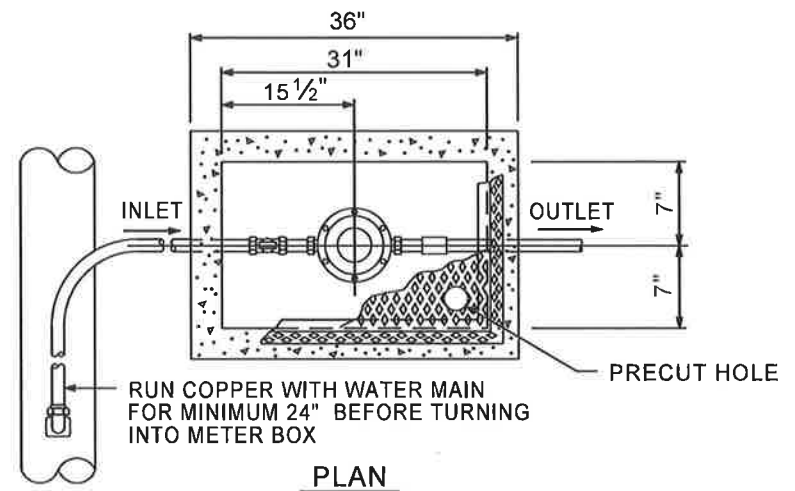
SHEET NO.

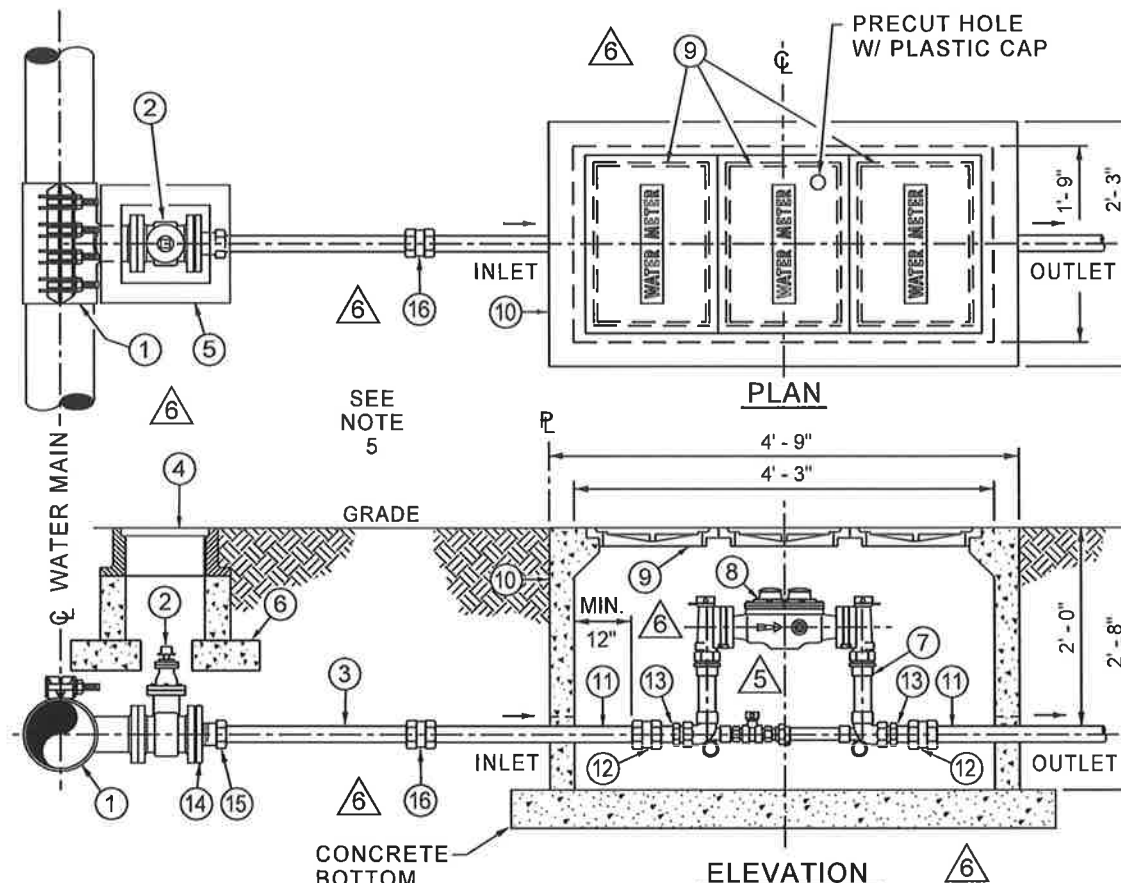
DATE: 12/20/02

1

REVISED: 9/1/21 PER M.S.U.D.

M_SHEET_01





NOTES:

1. ALL WORK TO BE INSPECTED BY M.S.U.D. AFTER WORK IS COMPLETE AND BEFORE BACKFILLING.
2. ALL WATER METERS SHALL BE PLACED OUTSIDE OF ANY PAVED AREA SUCH AS DRIVEWAYS, ROADS, ETC. METER BOX NEEDS TO BE 1" ABOVE FINISHED GRADE. PLACE METER IN GREEN SPACE.
3. CONNECTIONS:
ALL COPPER CONNECTIONS AND FITTINGS WILL BE COMPRESSION. USE TEFLON TAPE OR JOINT COMPOUND ON ALL THREADED CONNECTIONS.
4. WASHERS WILL BE FIBER OR RUBBER
5. THERE SHALL BE A MINIMUM DISTANCE OF 3'-0" BETWEEN THE OUTER EDGE OF THE METER BOX AND ANY OTHER UTILITIES, OR ABOVE-GROUND OR BELOW-GROUND STRUCTURES.
6. CONTACT M.S.U.D. FOR INFORMATION ON ITEM 8 IN THE MATERIAL SCHEDULE ABOVE. (2" NEPTUNE METER)
7. COPPER LINE SHALL BE ONE PIECE FROM VALVE TO FIRST COUPLING AND FROM COUPLING TO COPPER SETTER.
8. CROSS STREET WILL ADD 2" GATE VALVE ON M.S.U.D. SIDE OF BOX.

2" TAP & METER SAME SIDE AS MAIN

MATERIAL SCHEDULE

- 1 TAPPING SLEEVE - PIPE SIZE BY 4" STAINLESS STEEL WRAP AROUND SLEEVE. (fordmeterbox.com)
- 2 4" GATE VALVE FLG. x M.J. (TO BE BOLTED TO TAPPING SLEEVE) OPEN LEFT, RESILIENT WEDGE, 2" SQUARE OPERATING NUT.
- 3 2" 'K' TYPE COPPER
- 4 C.I. VALVE BOX FRAME AND COVER (1) JOHN BOUCHARD #8006 NASHVILLE STANDARD OR APPROVED EQUAL
- 5 VALVE BOX, PRE-CAST CONCRETE (1)
- 6 12"x 12"x 4" CONCRETE VALVE BOX FOOTING (4)
- 7 2" COPPER SETTER - FORD VV77-12B-11-77 WITH BY-PASS, FEMALE IRON PIPE INLET AND OUTLET SERVICE CONNECTIONS ANGLE METER VALVES INLET AND OUTLET 12" HEIGHT.
- 8 2" NEPTUNE RADIO READ WITH ANTENNA. (CUSTOMER SHALL PICK UP FROM M.S.U.D.). CUSTOMER IS RESPONSIBLE FOR METER DELIVERY
- 9 C.I. METER BOX FRAME AND COVER (3) ONE (1) WITH PRECUT HOLE. JOHN BOUCHARD #8110 NASHVILLE STANDARD OR APPROVED EQUAL (CANNOT SAY "METRO").
- 10 2" METER BOX W/BASE, PRE-CAST CONCRETE JARRET CONCRETE - 2012 TN12, ASHLAND CITY, TN, 37015- PHONE 615.792.9332
- 11 2" X 20" BRASS NIPPLE
- 12 2" BRASS UNION
- 13 CONNECTIONS TO COPPERSETTER: USE SMALL BRASS NIPPLE
- 14 4" PLUG M.J. WITH 2" THREAD HOLE
- 15 2" MALE THREADED BY 2" COMPRESSION FITTING
- 16 2" FEMALE X FEMALE THREADED COUPLING
- 17 ALL BACKFILL SHALL BE #57 STONE.

MADISON SUBURBAN UTILITY DISTRICT

2" METER INSTALLATION

JVE / BWSC

Turner Professional Building
5100 Linbar Drive, Suite 106
Nashville, Tennessee 37211

SCALE: N.T.S.

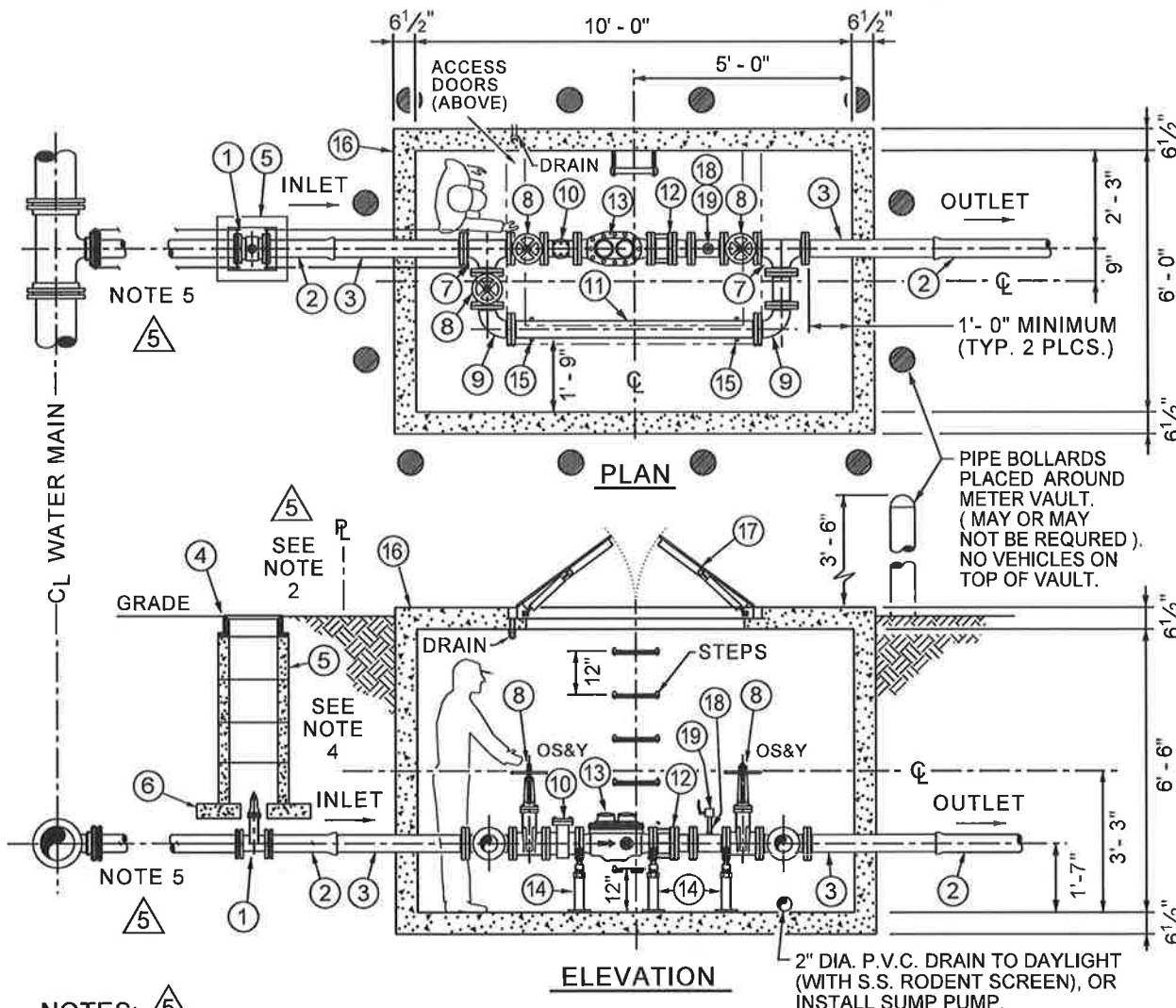
SHEET NO.

DATE: 12/20/02

3

REVISED: 9/1/21 PER M.S.U.D.

M_SHEET_03



NOTES: 5

1. ALL WORK TO BE INSPECTED BY M.S.U.D. AFTER WORK IS COMPLETE AND BEFORE BACKFILLING.
2. ALL WATER METERS SHALL BE PLACED OUTSIDE OF ANY PAVED AREA SUCH AS DRIVEWAYS, ROADS, ETC.
3. CONTRACTOR SHALL PROVIDE ANY AND ALL PERMITS TO M.S.U.D. BEFORE THE START OF WORK.
4. THERE SHALL BE A MINIMUM DISTANCE OF 3'-0" BETWEEN THE OUTER EDGE OF THE METER BOX AND ANY OTHER UTILITIES, OR ABOVE-GROUND OR BELOW-GROUND STRUCTURES.
5. JOINT RESTRAINT:
ALL FITTINGS WILL BE RODDED AND MEGA-LUGGED FROM

THE MAIN TO THE FIRST GATE VALVE IN METER VAULT. THE RODS SHALL BE 3/4" DIAMETER FULLY THREADED STAINLESS STEEL RODS WITH STAINLESS STEEL ALL BOLTS TO BE STAINLESS STEEL.

7. FITTINGS:
ALL FITTINGS INSIDE VAULT WILL BE FLANGED FITTINGS. ALL FITTINGS OUTSIDE VAULT WILL BE MECHANICAL JOINT FITTINGS.
8. CONTACT M.S.U.D. FOR INFORMATION ON ITEM 13 IN THE MATERIAL SCHEDULE ABOVE. (6" METER PICK-UP)
9. BACKFLOW MUST BE READY FOR INSPECTION BEFORE ANY METER WILL BE PROVIDED.

MATERIAL SCHEDULE

- 1 4" GATE VALVE M.J. (1) OPEN LEFT, RESILIENT WEDGE, 2" SQUARE OPER. NUT.
- 2 4" CLASS 52 DUCTILE IRON PIPE
- 3 4" - F.E.P.E. DUCTILE IRON PIPE (2)
- 4 C.I. VALVE BOX FRAME AND COVER (1) JOHN BOUCHARD #8006 NASHVILLE STANDARD OR APPROVED EQUAL
- 5 VALVE BOX, PRE-CAST CONCRETE (1)
- 6 12" x 12" x 4" CONCRETE VALVE BOX FOOTING (4)
- 7 4" FLANGED TEE (2)
- 8 4" GATE VALVE, FLANGED, OS&Y (3) OPEN LEFT, RESILIENT WEDGE HANDWHEEL OPERATOR
- 9 4" - 90° FLANGED BEND (2)
- 10 4" BADGER BRONZE PLATE STRAINER WITH STAINLESS STEEL SCREEN OR APPROVED EQUAL
- 11 4" CLASS 52 DUCTILE IRON PIPE
- 12 4" FLANGED DISMANTLING JOINT, RESTRAINED (1)
- 13 4" METER NEPTUNE RADIO READ WITH ANTENNA. INDICATING IN CUBIC FEET - DUAL REGISTERS. "NEPTUNE - TRU/FLO COMPOUND METER" (CUSTOMER SHALL PICK UP FROM M.S.U.D.)
- 14 STANDON MODEL S-96 CRADLE SUPPORT (3) OR APPROVED EQUAL. 5
- 15 STANDON MODEL S-92 SADDLE SUPPORT (2) OR APPROVED EQUAL.
- 16 4" METER BOX W/BASE, PRE-CAST CONCRETE, WITH STEPS, 12" O.C. PER O.S.H.A. 1910.27. AS APPROVED BY M.S.U.D. BOX SHALL BE ONE PIECE OR TWO PIECE.
- 17 "HALLIDAY PRODUCTS" MODEL H2W ACCESS DOOR 5'-0" X 4'-0" WITH HOLD OPEN ARM, SAFETY GRATE, AND PRECUT HOLE W/ PLASTIC CAP. H-20 RATED OR EQUAL APPROVED BY M.S.U.D.
- 18 2" X 8" BRASS NIPPLE
- 19 2" STAINLESS STEEL BALL VALVE

MADISON SUBURBAN UTILITY DISTRICT

4" METER INSTALLATION

JVE / BWSC

Turner Professional Building
5100 Linbar Drive, Suite 106
Nashville, Tennessee 37211

SCALE: N.T.S.

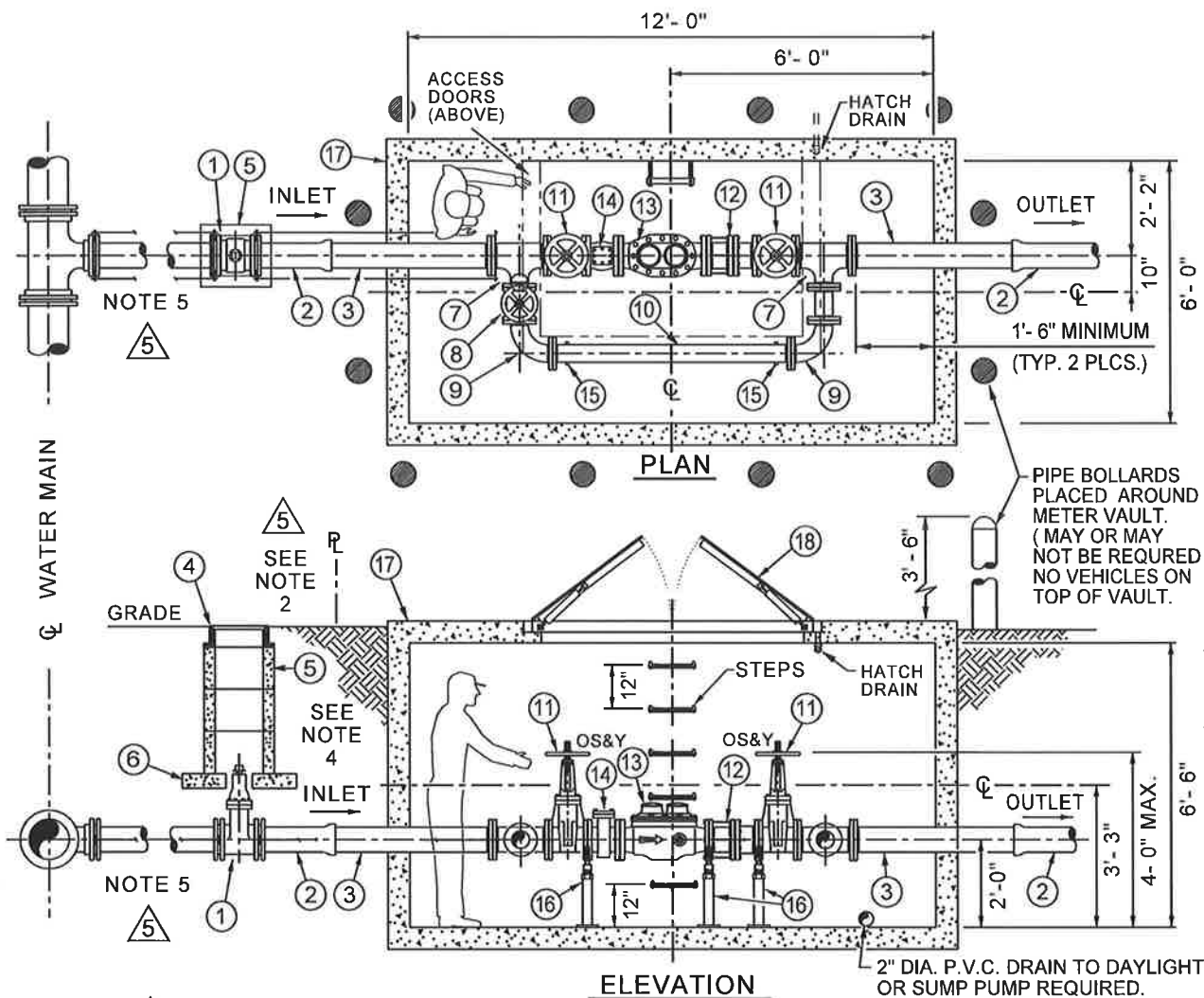
SHEET NO.

DATE: 12/20/02

5

REVISED: 5/14/19 PER M.S.U.D. 5

M_SHEET_05



NOTES: 5

1. ALL WORK TO BE INSPECTED BY M.S.U.D. AFTER WORK IS COMPLETE AND BEFORE BACKFILLING.
2. ALL WATER METERS SHALL BE PLACED OUTSIDE OF ANY PAVED AREA SUCH AS DRIVEWAYS, ROADS, ETC.
3. CONTRACTOR SHALL PROVIDE ANY AND ALL PERMITS TO M.S.U.D. BEFORE THE START OF WORK.
4. THERE SHALL BE A MINIMUM DISTANCE OF 3'-0" BETWEEN THE OUTER EDGE OF THE METER BOX AND ANY OTHER UTILITIES, OR ABOVE-GROUND OR BELOW-GROUND STRUCTURES.
5. JOINT RESTRAINT:
ALL FITTINGS WILL BE RODDED AND MEGA-LUGGED FROM

THE MAIN TO THE FIRST GATE VALVE IN METER VAULT. THE RODS SHALL BE $\frac{3}{4}$ " DIAMETER FULLY THREADED STAINLESS STEEL RODS WITH STAINLESS STEEL NUTS. ALL BOLTS TO BE STAINLESS STEEL.

6. FITTINGS:
ALL FITTINGS INSIDE VAULT WILL BE FLANGED FITTINGS. ALL FITTINGS OUTSIDE VAULT WILL BE MECHANICAL JOINT FITTINGS.
7. CONTACT M.S.U.D. FOR INFORMATION ON ITEM 13 IN THE MATERIAL SCHEDULE ABOVE. (6" METER PICK-UP)
8. BACKFLOW MUST BE READY FOR INSPECTION BEFORE ANY METER WILL BE PROVIDED.

MATERIAL SCHEDULE

- 1 6" GATE VALVE M.J. (1) OPEN LEFT, RESILIENT WEDGE, 2" SQUARE OPER. NUT.
- 2 6" CLASS 52 DUCTILE IRON PIPE (2)
- 3 6" - F.E.P.E. CLASS 52 DUCTILE IRON PIPE (2)
- 4 C.I. VALVE BOX FRAME AND COVER (1)
JOHN BOUCHARD #8006 NASHVILLE
STANDARD OR APPROVED EQUAL
- 5 VALVE BOX, PRE-CAST CONCRETE (1)
- 6 12" x 12" x 4" CONCRETE VALVE BOX FOOTING (4)
- 7 6" x 6" x 4" FLANGED REDUCING TEE (2)
- 8 4" GATE VALVE, FLANGED, OS&Y (1)
OPEN LEFT, RESILIENT WEDGE
HANDWHEEL OPERATOR
- 9 4" - 90° FLANGED BEND (2)
- 10 4" CLASS 52 DUCTILE IRON PIPE
- 11 6" GATE VALVE, FLANGED, OS&Y (2)
OPEN LEFT, RESILIENT WEDGE
HANDWHEEL OPERATOR
- 12 6" FLANGED DISMANTLING JOINT, RESTRAINED (1)
- 13 6" METER "NEPTUNE" OR "OCTAVE" RADIO READ.
WITH ANTENNA SHALL BE REQUIRED BY M.S.U.D.
(CUSTOMER SHALL PICK UP FROM M.S.U.D.).
CUSTOMER IS RESPONSIBLE FOR METER DELIVERY.
- 14 6" BRONZE PLATE STRAINER OR "OCTAVE"
WITH STAINLESS STEEL SCREEN. - MAY OR MAY
NOT BE REQUIRED DEPENDING ON METER TYPE.
- 15 STANDON MODEL S-92 SADDLE SUPPORT (2)
OR APPROVED EQUAL.
- 16 STANDON MODEL S-96 CRADLE SUPPORT (3)
OR APPROVED EQUAL.
- 17 6" METER BOX W/BASE, PRE-CAST CONCRETE,
WITH STEPS, 12" O.C. PER O.S.H.A. 1910.27.
AS APPROVED BY M.S.U.D. BOX SHALL BE
ONE PIECE OR TWO PIECE.
- 18 "HALLIDAY PRODUCTS" MODEL H2W ACCESS
DOOR 6'-0" X 4'-0" WITH HOLD OPEN ARM,
SAFETY GRATE, AND PRECUT HOLE W/PLASTIC CAP.
H-20 RATED OR EQUAL APPROVED BY M.S.U.D.

MADISON SUBURBAN UTILITY DISTRICT

6" METER INSTALLATION

JVE / BWSC

Turner Professional Building
5100 Linbar Drive, Suite 106
Nashville, Tennessee 37211

SCALE: N.T.S.

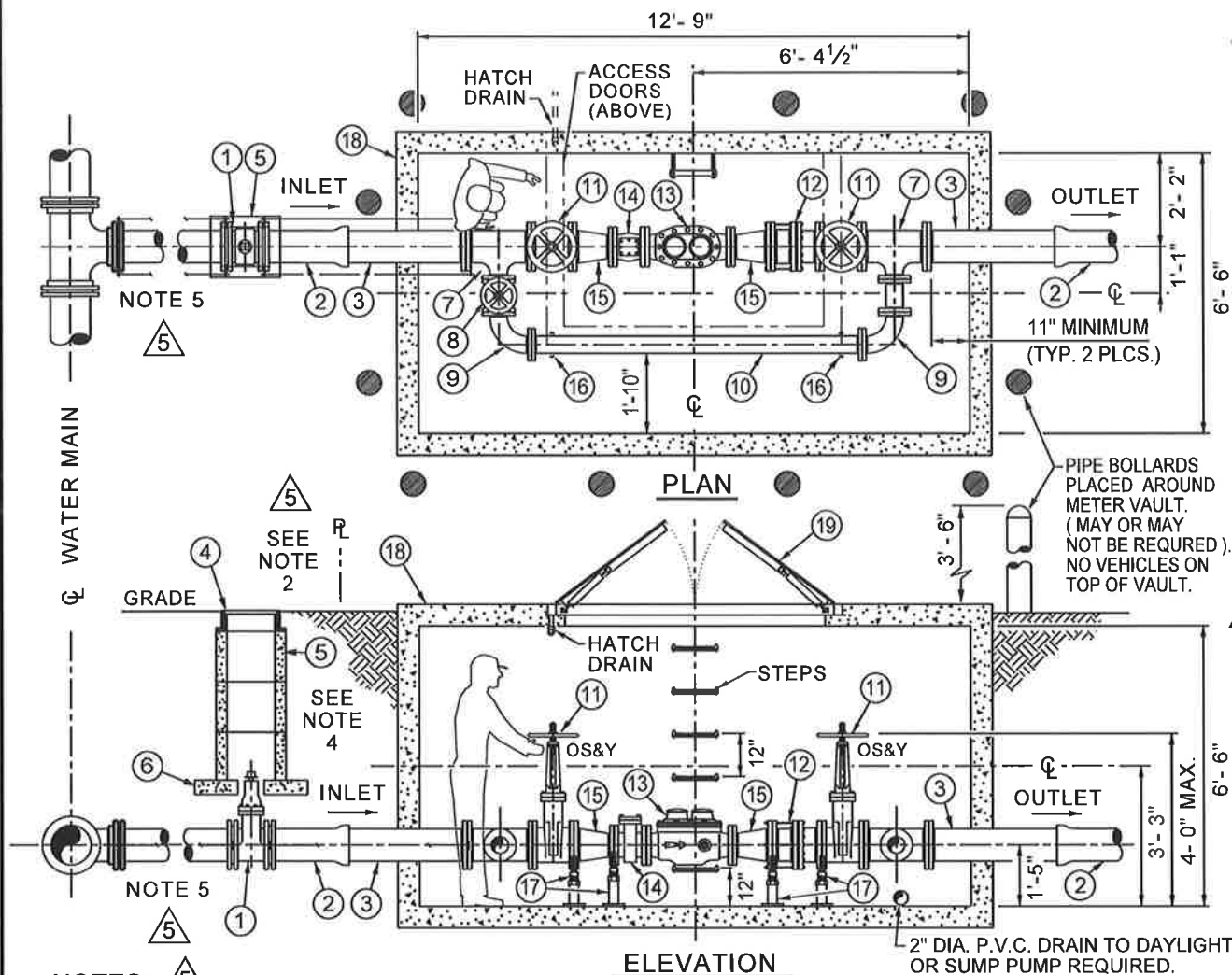
SHEET NO.

DATE: 12/20/02

6

REVISED: 5/14/19 PER M.S.U.D. 5

M_SHEET_06



NOTES: 5

1. ALL WORK TO BE INSPECTED BY M.S.U.D. AFTER WORK IS COMPLETE AND BEFORE BACKFILLING.
2. ALL WATER METERS SHALL BE PLACED OUTSIDE OF ANY PAVED AREA SUCH AS DRIVEWAYS, ROADS, ETC.
3. CONTRACTOR SHALL PROVIDE ANY AND ALL PERMITS TO M.S.U.D. BEFORE THE START OF WORK.
4. THERE SHALL BE A MINIMUM DISTANCE OF 3'-0" BETWEEN THE OUTER EDGE OF THE METER BOX AND ANY OTHER UTILITIES, OR ABOVE-GROUND OR BELOW-GROUND STRUCTURES.
5. JOINT RESTRAINT:
ALL FITTINGS WILL BE RODDED AND MEGA-LUGGED FROM

THE MAIN TO THE FIRST GATE VALVE IN METER VAULT. THE RODS SHALL BE $\frac{3}{4}$ " DIAMETER FULLY THREADED STAINLESS STEEL RODS WITH STAINLESS STEEL NUTS. ALL BOLTS TO BE STAINLESS STEEL.

6. FITTINGS:
ALL FITTINGS INSIDE VAULT WILL BE FLANGED FITTINGS. ALL FITTINGS OUTSIDE VAULT WILL BE MECHANICAL JOINT FITTINGS.
7. CONTACT M.S.U.D. FOR INFORMATION ON ITEM 13 IN THE MATERIAL SCHEDULE ABOVE. (6 x 8" METER PICK-UP)
8. BACKFLOW MUST BE READY FOR INSPECTION BEFORE ANY METER WILL BE PROVIDED.

MATERIAL SCHEDULE

- 1 8" GATE VALVE M.J. (1) OPEN LEFT, RESILIENT WEDGE, 2" SQUARE OPER. NUT.
- 2 8" CLASS 52 DUCTILE IRON PIPE (2)
- 3 8" - F.E.P.E. CLASS 52 DUCTILE IRON PIPE (2)
- 4 C.I. VALVE BOX FRAME AND COVER (1)
JOHN BOUCHARD #8006 NASHVILLE
STANDARD OR APPROVED EQUAL
- 5 VALVE BOX, PRE-CAST CONCRETE (1)
- 6 12" x 12" x 4" CONCRETE VALVE BOX FOOTING (4)
- 7 8" x 8" x 6" FLANGED REDUCING TEE (2)
- 8 6" GATE VALVE, FLANGED, OS&Y (1)
OPEN LEFT, RESILIENT WEDGE
HANDWHEEL OPERATOR
- 9 6" - 90° FLANGED BEND (2)
- 10 6" CLASS 52 DUCTILE IRON PIPE
- 11 8" GATE VALVE, FLANGED, OS&Y (2)
OPEN LEFT, RESILIENT WEDGE
HANDWHEEL OPERATOR
- 12 8" FLANGED DISMANTLING JOINT, RESTRAINED (1)
- 13 6" x 8" METER "NEPTUNE" OR "OCTAVE" RADIO READ.
WITH ANTENNA SHALL BE REQUIRED BY M.S.U.D.
(CUSTOMER SHALL PICK UP FROM M.S.U.D.).
CUSTOMER IS RESPONSIBLE FOR METER DELIVERY.
- 14 6" BRONZE PLATE STRAINER OR "OCTAVE"
WITH STAINLESS STEEL SCREEN. - MAY OR MAY NOT
BE REQUIRED DEPENDING ON METER TYPE.
- 15 8" x 6" FLANGED CONCENTRIC REDUCER (2)
- 16 STANDON MODEL S-92 SADDLE SUPPORT (2) 5
- 17 STANDON MODEL S-96 CRADLE SUPPORT (4) 5
- 18 8" METER BOX W/BASE, PRE-CAST CONCRETE,
WITH STEPS, 12" O.C. PER O.S.H.A. 1910.27.
AS APPROVED BY M.S.U.D. BOX SHALL BE
ONE PIECE OR TWO PIECE.
- 19 "HALLIDAY PRODUCTS" MODEL H2W ACCESS
DOOR 6'-0" X 4'-0" WITH HOLD OPEN ARM, AND
SAFETY GRATE. AND PRECUT HOLE W/PLASTIC CAP.
H-20 RATED OR EQUAL APPROVED BY M.S.U.D.

MADISON SUBURBAN UTILITY DISTRICT

8" METER INSTALLATION

JVE / BWSC

Turner Professional Building
5100 Linbar Drive, Suite 106
Nashville, Tennessee 37211

SCALE: N.T.S.

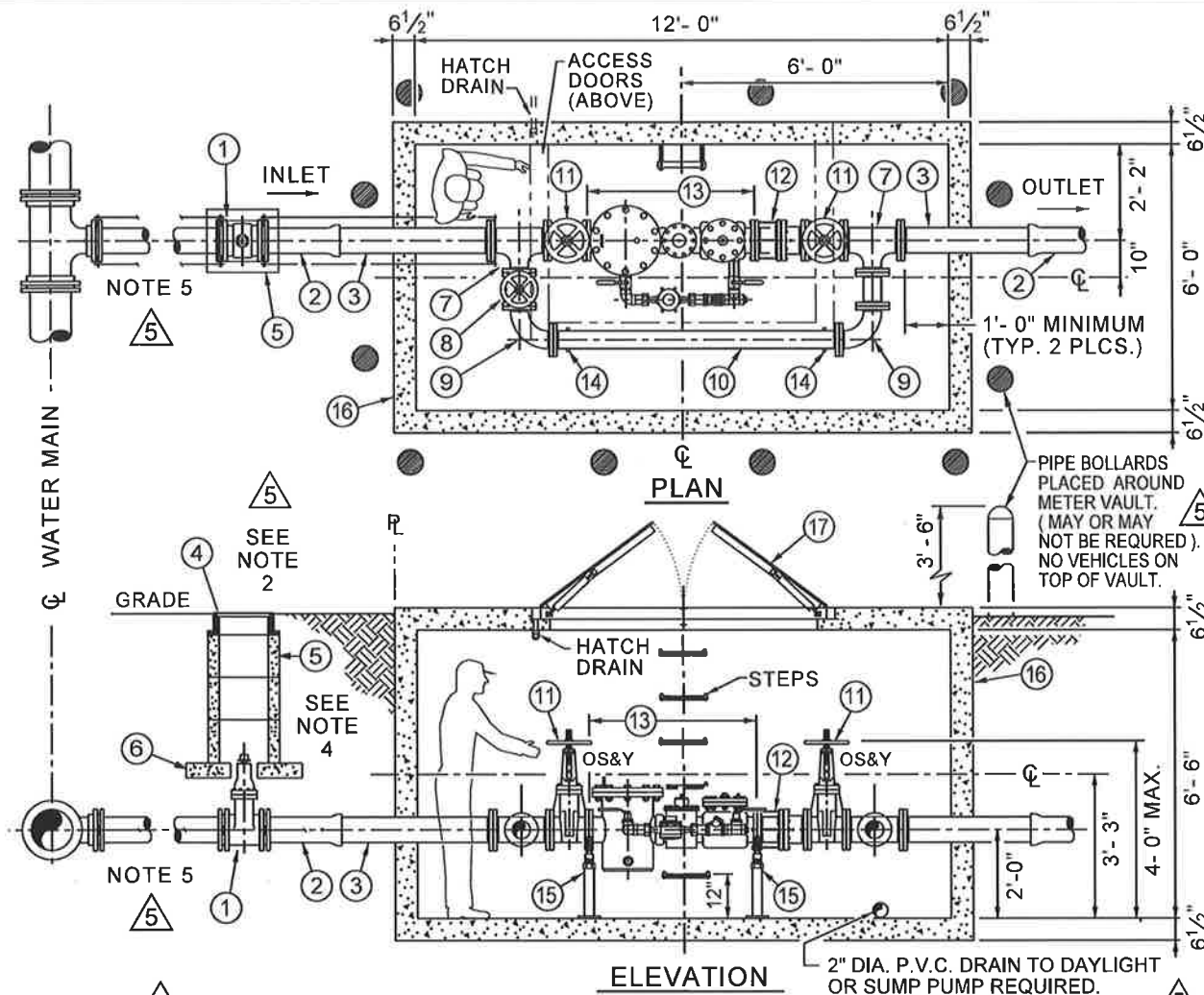
SHEET NO.

DATE: 12/20/02

7

REVISED: 5/14/19 PER M.S.U.D. 5

M_SHEET_07



NOTES:

- ALL WORK TO BE INSPECTED BY M.S.U.D. AFTER WORK IS COMPLETE AND BEFORE BACKFILLING.
- ALL WATER METERS SHALL BE PLACED OUTSIDE OF ANY PAVED AREA SUCH AS DRIVEWAYS, ROADS, ETC.
- CONTRACTOR SHALL PROVIDE ANY AND ALL PERMITS TO M.S.U.D. BEFORE THE START OF WORK.
- THERE SHALL BE A MINIMUM DISTANCE OF 3'-0" BETWEEN THE OUTER EDGE OF THE METER BOX AND ANY OTHER UTILITIES, OR ABOVE-GROUND OR BELOW-GROUND STRUCTURES.
- JOINT RESTRAINT:
ALL FITTINGS WILL BE RODDED AND MEGA-LUGGED FROM

THE MAIN TO THE FIRST GATE VALVE IN METER VAULT. THE RODS SHALL BE 3/4" DIAMETER FULLY THREADED STAINLESS STEEL RODS WITH STAINLESS STEEL NUTS. ALL BOLTS TO BE STAINLESS STEEL.

- FITTINGS:
ALL FITTINGS INSIDE VAULT WILL BE FLANGED FITTINGS. ALL FITTINGS OUTSIDE VAULT WILL BE MECHANICAL JOINT FITTINGS.
- CONTACT M.S.U.D. FOR INFORMATION ON ITEM 13 IN THE MATERIAL SCHEDULE ABOVE. (6 x 8" METER PICK-UP)
- BACKFLOW MUST BE READY FOR INSPECTION BEFORE ANY METER WILL BE PROVIDED.

MATERIAL SCHEDULE

- 6" GATE VALVE M.J. (1) OPEN LEFT, RESILIENT WEDGE, 2" SQUARE OPER. NUT.
- 6" CLASS 52 DUCTILE IRON PIPE (2)
- 6" - F.E.P.E. DUCTILE IRON PIPE (2)
- C.I. VALVE BOX FRAME AND COVER (2)
JOHN BOUCHARD #8006 NASHVILLE STANDARD OR APPROVED EQUAL
- VALVE BOX, PRE-CAST CONCRETE (1)
- 12" x 12" x 4" CONCRETE VALVE BOX FOOTING (8)
- 6" x 6" x 4" FLANGED REDUCING TEE (2)
- 4" GATE VALVE, FLANGED, OS&Y (1)
OPEN LEFT, RESILIENT WEDGE HANDWHEEL OPERATOR
- 4" - 90° FLANGED BEND (2)
- 4" CLASS 52 DUCTILE IRON PIPE
- 6" GATE VALVE, FLANGED, OS&Y (2)
OPEN LEFT, RESILIENT WEDGE HANDWHEEL OPERATOR
- 6" FLANGED DISMANTLING JOINT, RESTRAINED (1)
- 6" x 1 1/2" "NEPTUNE" OR "OCTAVE" S.S. FIRE SERVICE METER WITH BASKET STRAINER, INTERGAL CHECK VALVE AND METERED BY PASS MODEL: PROTECTUS III S (HIGH PERFORMANCE) (SHALL BE FIRE SYSTEM RATED). (CUSTOMER SHALL PICK UP FROM M.S.U.D.)
- STANDON MODEL S-92 SADDLE SUPPORT (2) OR APPROVED EQUAL.
- STANDON MODEL S-96 CRADLE SUPPORT (2) OR APPROVED EQUAL.
- 6" METER BOX W/BASE, PRE-CAST CONCRETE, WITH STEPS, 12" O.C. PER O.S.H.A. 1910.27. AS APPROVED BY M.S.U.D. BOX SHALL BE ONE PIECE OR TWO PIECE.
- "HALLIDAY PRODUCTS" MODEL H2W ACCESS DOOR 6'-0" X 4'-0" WITH HOLD OPEN ARM, AND SAFETY GRATE. H-20 RATED OR EQUAL AS APPROVED BY M.S.U.D.

MADISON SUBURBAN UTILITY DISTRICT

6" FIRE LINE METER INSTALLATION

JVE / BWSC

Turner Professional Building
5100 Linbar Drive, Suite 106
Nashville, Tennessee 37211

SCALE: N.T.S.

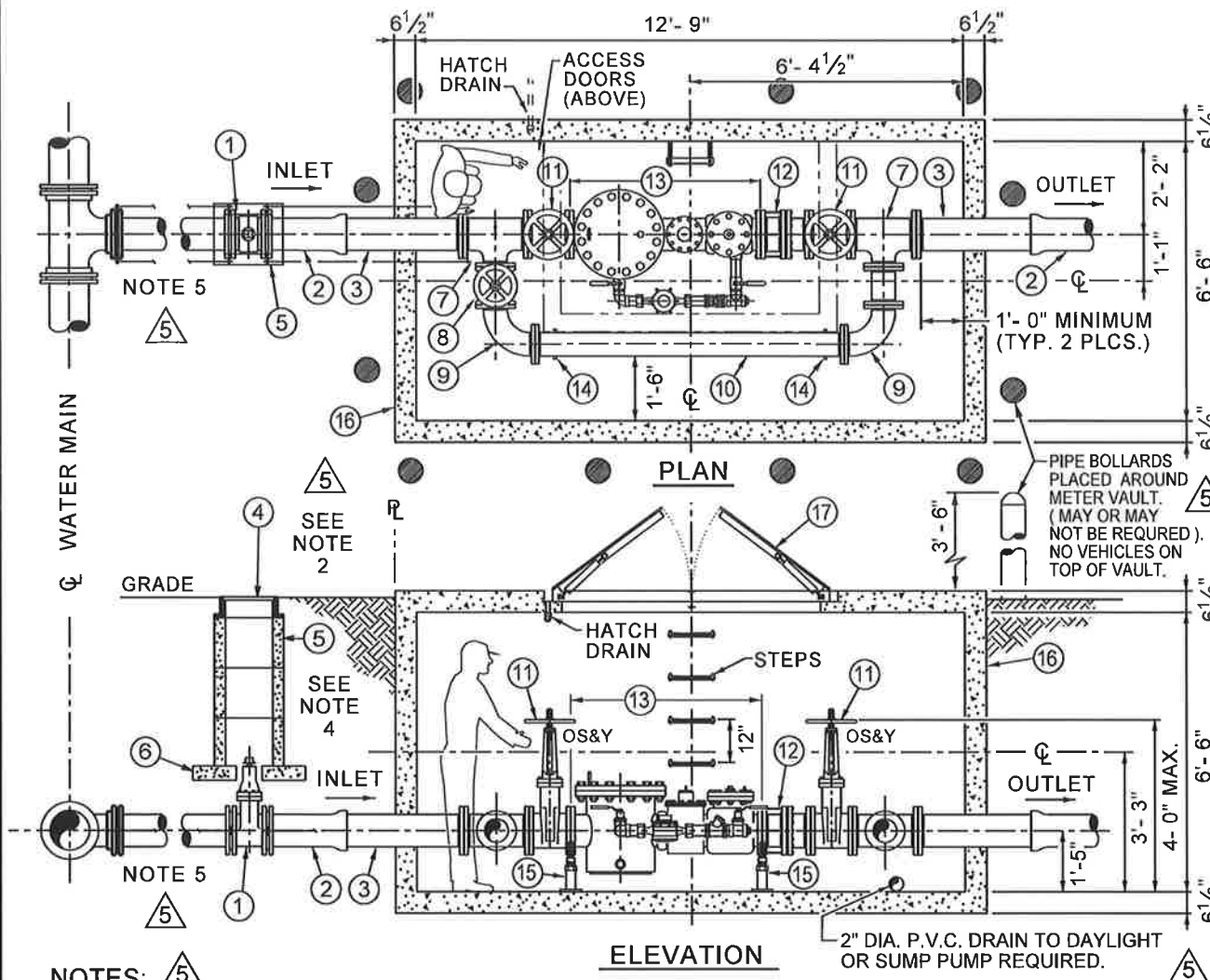
SHEET NO.

DATE: 12/20/02

8

REVISED: 5/14/19 PER M.S.U.D.

MF_SHEET_08



NOTES: 5

1. ALL WORK TO BE INSPECTED BY M.S.U.D. AFTER WORK IS COMPLETE AND BEFORE BACKFILLING.
2. ALL WATER METERS SHALL BE PLACED OUTSIDE OF ANY PAVED AREA SUCH AS DRIVEWAYS, ROADS, ETC.
3. CONTRACTOR SHALL PROVIDE ANY AND ALL PERMITS TO M.S.U.D. BEFORE THE START OF WORK.
4. THERE SHALL BE A MINIMUM DISTANCE OF 3'-0" BETWEEN THE OUTER EDGE OF THE METER BOX AND ANY OTHER UTILITIES, OR ABOVE-GROUND OR BELOW-GROUND STRUCTURES.
5. JOINT RESTRAINT:
ALL FITTINGS WILL BE RODDED AND MEGA-LUGGED FROM

THE MAIN TO THE FIRST GATE VALVE IN METER VAULT. THE RODS SHALL BE 3/4" DIAMETER FULLY THREADED STAINLESS STEEL RODS WITH STAINLESS STEEL NUTS. ALL BOLTS TO BE STAINLESS STEEL.

6. FITTINGS:
ALL FITTINGS INSIDE VAULT WILL BE FLANGED FITTINGS. ALL FITTINGS OUTSIDE VAULT WILL BE MECHANICAL JOINT FITTINGS.
7. CONTACT M.S.U.D. FOR INFORMATION ON ITEM 13 IN THE MATERIAL SCHEDULE ABOVE. (8" METER PICK-UP)
8. BACKFLOW MUST BE READY FOR INSPECTION BEFORE ANY METER WILL BE PROVIDED.

MATERIAL SCHEDULE

- ① 8" GATE VALVE M.J. (1) OPEN LEFT, RESILIENT WEDGE, 2" SQUARE OPER. NUT.
- ② 8" CLASS 52 DUCTILE IRON PIPE (2)
- ③ 8" - F.E.P.E. DUCTILE IRON PIPE (2)
- ④ C.I. VALVE BOX FRAME AND COVER (2)
JOHN BOUCHARD #8006 NASHVILLE STANDARD OR APPROVED EQUAL
- ⑤ VALVE BOX, PRE-CAST CONCRETE (1)
- ⑥ 12" x 12" x 4" CONCRETE VALVE BOX FOOTING (8)
- ⑦ 8" x 8" x 6" FLANGED REDUCING TEE (2)
- ⑧ 6" GATE VALVE, FLANGED, OS&Y (1)
OPEN LEFT, RESILIENT WEDGE HANDWHEEL OPERATOR
- ⑨ 6" - 90° FLANGED BEND (2)
- ⑩ 6" CLASS 52 DUCTILE IRON PIPE
- ⑪ 8" GATE VALVE, FLANGED, OS&Y (2)
OPEN LEFT, RESILIENT WEDGE HANDWHEEL OPERATOR
- ⑫ 8" FLANGED DISMANTLING JOINT, RESTRAINED (1)
- ⑬ 8" x 2" "NEPTUNE" OR "OCTAVE" S.S. FIRE SERVICE METER WITH BASKET STRAINER, INTEGRAL CHECK VALVE AND METERED BY PASS MODEL: PROTECTUS III S (HIGH PERFORMANCE) (SHALL BE FIRE SYSTEM RATED). (CUSTOMER SHALL PICK UP FROM M.S.U.D.)
- ⑭ STANDON MODEL S-92 SADDLE SUPPORT (2) OR APPROVED EQUAL.
- ⑮ STANDON MODEL S-96 CRADLE SUPPORT (2) OR APPROVED EQUAL.
- ⑯ 8" METER BOX W/BASE, PRE-CAST CONCRETE, WITH STEPS, 12" O.C. PER O.S.H.A. 1910.27. AS APPROVED BY M.S.U.D. BOX SHALL BE ONE PIECE OR TWO PIECE.
- ⑰ "HALLIDAY PRODUCTS" MODEL H2W ACCESS DOOR 6'-0" X 4'-0" WITH HOLD OPEN ARM, AND SAFETY GRATE. H-20 RATED OR EQUAL AS APPROVED BY M.S.U.D.

MADISON SUBURBAN UTILITY DISTRICT

8" FIRE LINE METER INSTALLATION

JVE / BWSC

Turner Professional Building
5100 Linbar Drive, Suite 106
Nashville, Tennessee 37211

SCALE: N.T.S.

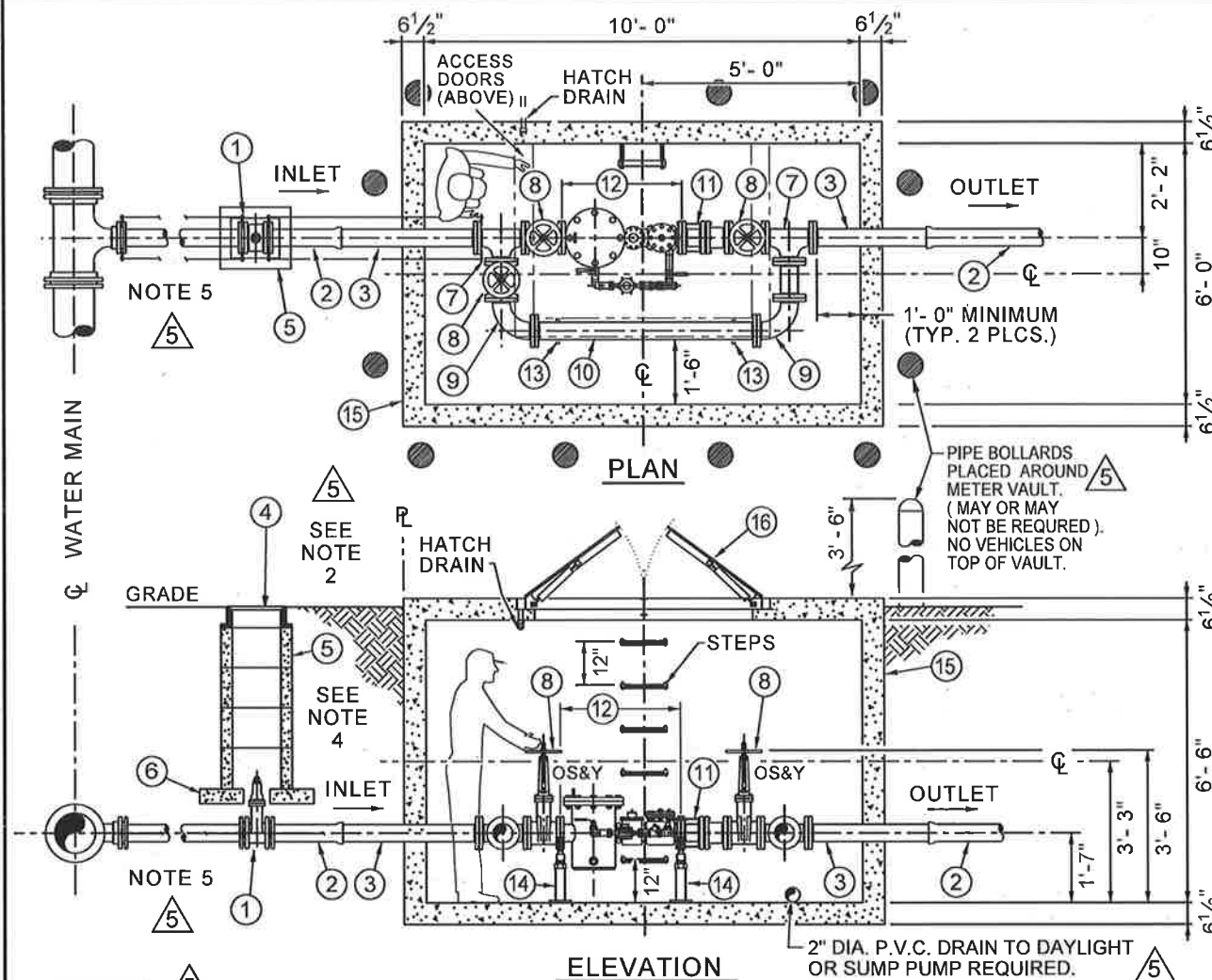
SHEET NO.

DATE: 12/20/02

9

REVISED: 5/14/19 PER M.S.U.D. 5

MF_SHEET_09



MATERIAL SCHEDULE	
①	4" GATE VALVE M.J. (1) OPEN LEFT, RESILIENT WEDGE, 2" SQUARE OPER. NUT.
②	4" CLASS 52 DUCTILE IRON PIPE (2)
③	4" - F.E.P.E. DUCTILE IRON PIPE (2)
④	C.I. VALVE BOX FRAME AND COVER (2) JOHN BOUCHARD #8006 NASHVILLE STANDARD OR APPROVED EQUAL
⑤	VALVE BOX, PRE-CAST CONCRETE (1)
⑥	12" x 12" x 4" CONCRETE VALVE BOX FOOTING (8)
⑦	4" FLANGED TEE (2)
⑧	4" GATE VALVE, FLANGED, OS&Y (3) OPEN LEFT, RESILIENT WEDGE HANDWHEEL OPERATOR
⑨	4" - 90° FLANGED BEND (2)
⑩	4" CLASS 52 DUCTILE IRON PIPE
⑪	4" FLANGED DISMANTLING JOINT, RESTRAINED (1)
⑫	4" x 1" "NEPTUNE" OR "OCTAVE" S.S. FIRE SERVICE METER WITH BASKET STRAINER, INTEGRAL CHECK VALVE AND METERED BY PASS. MODEL: PROTECTUS III S (HIGH PERFORMANCE). (SHALL BE FIRE SYSTEM RATED). (CUSTOMER SHALL PICK UP FROM M.S.U.D.)
⑬	STANDON MODEL S-92 SADDLE SUPPORT (2) OR APPROVED EQUAL.
⑭	STANDON MODEL S-96 CRADLE SUPPORT (2) OR APPROVED EQUAL.
⑮	4" METER BOX W/BASE, PRE-CAST CONCRETE, WITH STEPS, 12" O.C. PER O.S.H.A. 1910.27. AS APPROVED BY M.S.U.D. BOX SHALL BE ONE PIECE OR TWO PIECE.
⑯	"HALLIDAY PRODUCTS" MODEL H2W ACCESS DOOR 5'-0" X 4'-0" WITH HOLD OPEN ARM, AND SAFETY GRATE. H-20 RATED OR EQUAL APPROVED BY M.S.U.D.

NOTES: ⑤

- ALL WORK TO BE INSPECTED BY M.S.U.D. AFTER WORK IS COMPLETE AND BEFORE BACKFILLING.
- ALL WATER METERS SHALL BE PLACED OUTSIDE OF ANY PAVED AREA SUCH AS DRIVEWAYS, ROADS, ETC.
- CONTRACTOR SHALL PROVIDE ANY AND ALL PERMITS TO M.S.U.D. BEFORE THE START OF WORK.
- THERE SHALL BE A MINIMUM DISTANCE OF 3'-0" BETWEEN THE OUTER EDGE OF THE METER BOX AND ANY OTHER UTILITIES, OR ABOVE-GROUND OR BELOW-GROUND STRUCTURES.
- JOINT RESTRAINT:
ALL FITTINGS WILL BE RODDED AND MEGA-LUGGED FROM

THE MAIN TO THE FIRST GATE VALVE IN METER VAULT. THE RODS SHALL BE 3/4" DIAMETER FULLY THREADED STAINLESS STEEL RODS WITH STAINLESS STEEL NUTS. ALL BOLTS TO BE STAINLESS STEEL.

- FITTINGS:
ALL FITTINGS INSIDE VAULT WILL BE FLANGED FITTINGS. ALL FITTINGS OUTSIDE VAULT WILL BE MECHANICAL JOINT FITTINGS.
- CONTACT M.S.U.D. FOR INFORMATION ON ITEM 13 IN THE MATERIAL SCHEDULE ABOVE. (4" METER PICK-UP)
- BACKFLOW MUST BE READY FOR INSPECTION BEFORE ANY METER WILL BE PROVIDED.

MADISON SUBURBAN UTILITY DISTRICT

4" FIRE LINE METER INSTALLATION

JVE / BWSC

Turner Professional Building
5100 Linbar Drive, Suite 106
Nashville, Tennessee 37211

SCALE: N.T.S.

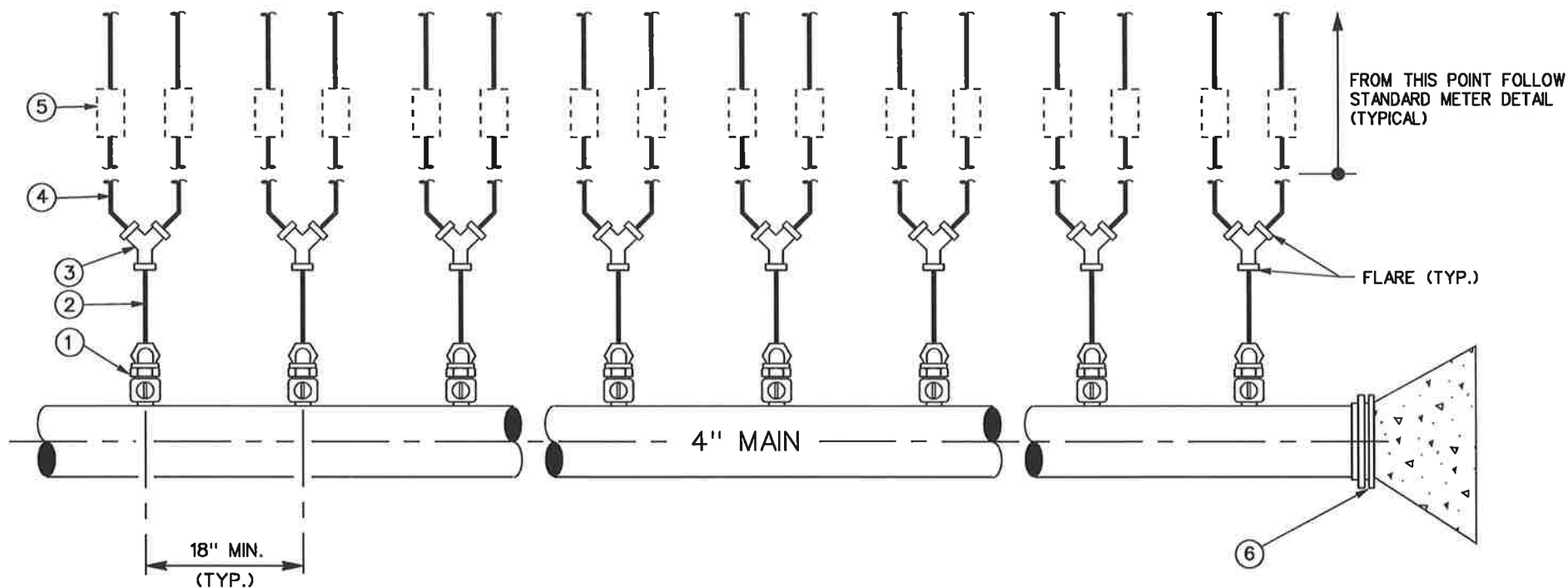
SHEET NO.

DATE: 07/29/15

13

REVISED: 5/14/19 PER M.S.U.D. ⑤

MF_SHEET_13



MATERIAL SCHEDULE

- ① MULTI - 1" CORPORATION STOPS.
McDONALD 4701 WITH 4776S 90° BEND
MUELLER H-15020
- ② SERVICE MATERIAL
1" 'K' TYPE SOFT COPPER TUBING
- ③ 8 - 1" x $\frac{3}{4}$ " WYES (FLARE)
- ④ $\frac{3}{4}$ " 'K' TYPE SOFT COPPER TUBING
- ⑤ MULTI - $\frac{3}{4}$ " METERS
- ⑥ 4" CAP W/KICKER

NOTES:

1. JOINT RESTRAINT:
ALL FITTINGS WILL BE RODDED OR MEGALUG FROM MAIN TO METER. RODS WILL BE $\frac{3}{4}$ " DIAMETER FULLY THREADED STAINLESS STEEL RODS.
2. FITTINGS:
ALL FITTINGS INSIDE VAULT WILL BE FLANGED FITTINGS. ALL FITTINGS OUTSIDE VAULT WILL BE MECHANICAL JOINT FITTINGS.
3. ALL WORK TO BE INSPECTED BY M.S.U.D. AFTER WORK IS COMPLETE AND BEFORE BACKFILLING.
4. CONTRACTOR IS REQUIRED TO INSTALL A PRESSURE REDUCING VALVE (PRV) ON THE WATER USER'S SIDE OF THE METER OUTSIDE THE METER BOX FOR INSTALLATIONS WHICH HAVE A STATIC PRESSURE (NO WATER FLOW) OF 100 POUNDS PER SQUARE INCH (PSI) OR GREATER. THE WATER USER SHALL BE RESPONSIBLE FOR MAINTAINING THE PRV IN A GOOD WORKING CONDITION. M.S.U.D. IS NOT RESPONSIBLE FOR REPLACING ANY PORTION OF THE PRV.
5. ALL WATER METERS SHALL BE PLACED OUTSIDE OF ANY PAVED AREA SUCH AS DRIVEWAYS, ROADS, ETC.

MADISON SUBURBAN UTILITY DISTRICT

MANIFOLD SYSTEM FOR
 $\frac{3}{4}$ " WATER SERVICE

JVE / BWSC

Turner Professional Building
5100 Linbar Drive, Suite 106
Nashville, Tennessee 37211

SCALE: N.T.S.

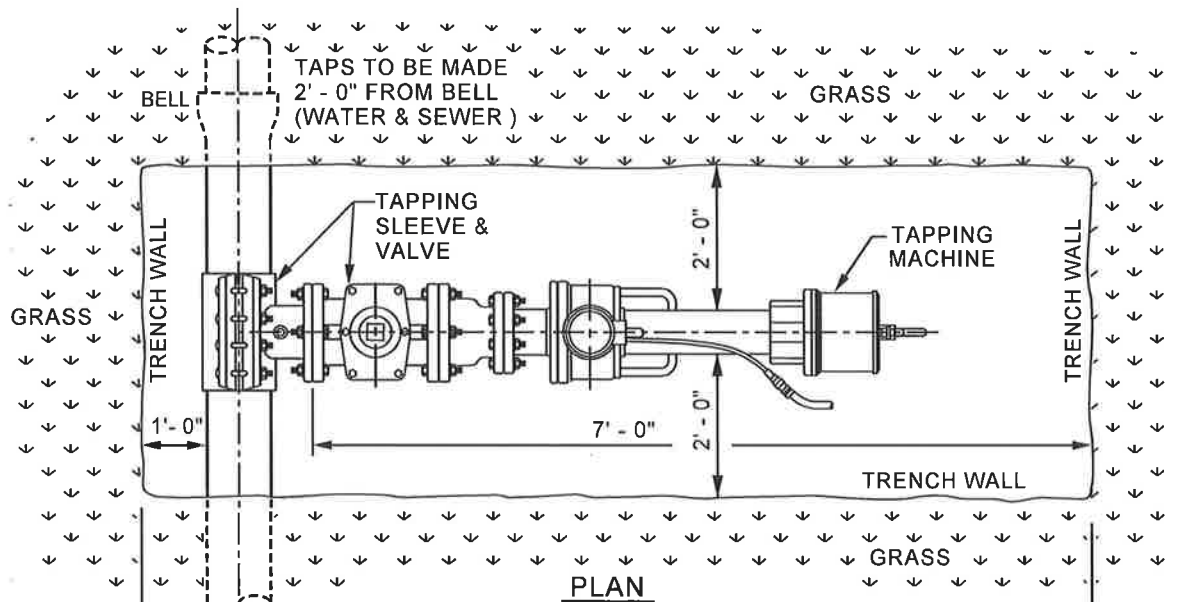
DATE: 08/05/02

SHEET NO.

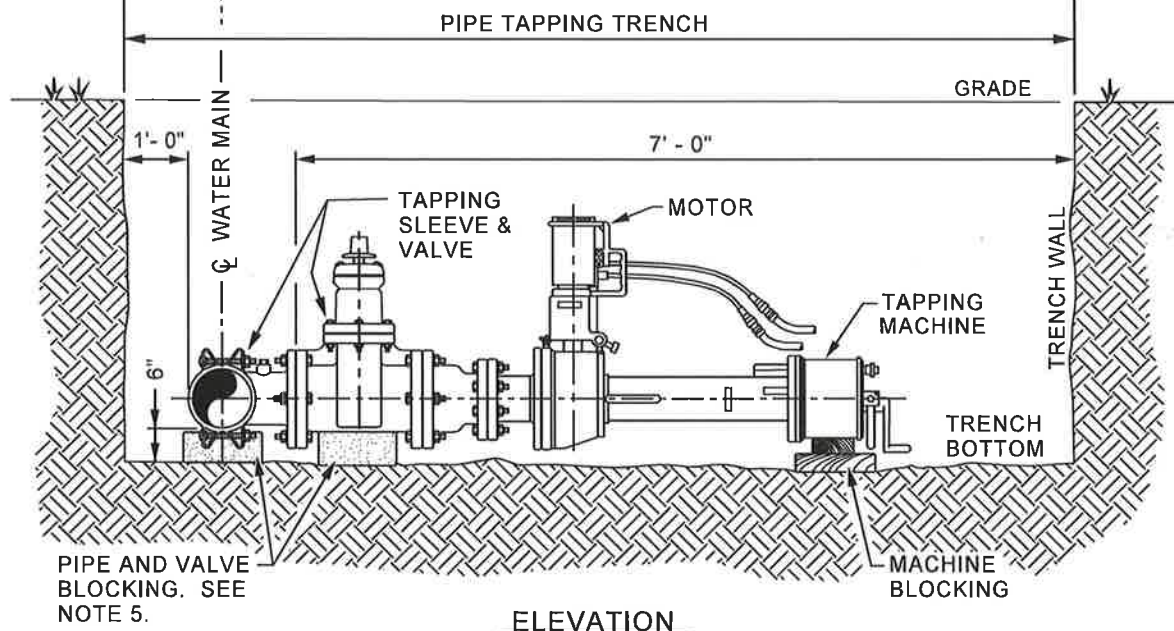
10

REVISED: 02/03/03

MF_SHEET_10



PLAN



ELEVATION

NOTES:

1. ALL TRENCHES 5' - 0" DEEP OR MORE SHALL HAVE SHORING OR TRENCH BOX TO FOLLOW ALL O.S.H.A. AND T.O.S.H.A. REGULATIONS.
2. THE CONTRACTOR SHALL PROVIDE LADDER FOR ACCESS TO THE EXCAVATED PIPE AND GRAVEL IF THE TRENCH IS MUDDY WHILE THE M.S.U.D. CREW IS ON SITE.
3. ALL TRENCHES FOR TAPPING SHALL BE 4' - 0" WIDE OR GREATER. 4' - 0" OF PIPE IS TO BE EXPOSED WITH 1' - 0" CLEARANCE BEHIND THE PIPE AND 6" UNDER THE PIPE.
4. ALL TAPPING SLEEVES SHALL BE FORD - STAINLESS STEEL "FAST" (DIAMETER) - (TAP SIZE) M.J. OR EQUIVALENT APPROVED BY M.S.U.D.
5. ALL BLOCKS UNDER THE TAPPING VALVE SHALL BE STANDARD CONCRETE FOOTING BLOCKS.
6. ALL WATER SERVICE LINES AND VALVE BOXES SHALL BE IN GRASSY AREA (NOT IN DRIVEWAY OR SIDEWALK).



TENNESSEE ONE CALL

CALL BEFORE YOU DIG!
(615) 367-1110 1 (800) 351-1111
www.tnonecall.com



**MADISON SUBURBAN
UTILITY DISTRICT**

**TAPPING MACHINE
TRENCH DIMENSIONS**

JVE / BWSC

Turner Professional Building
5100 Linbar Drive, Suite 106
Nashville, Tennessee 37211

SCALE: N.T.S.

SHEET NO.

DATE: 4/14/22

1